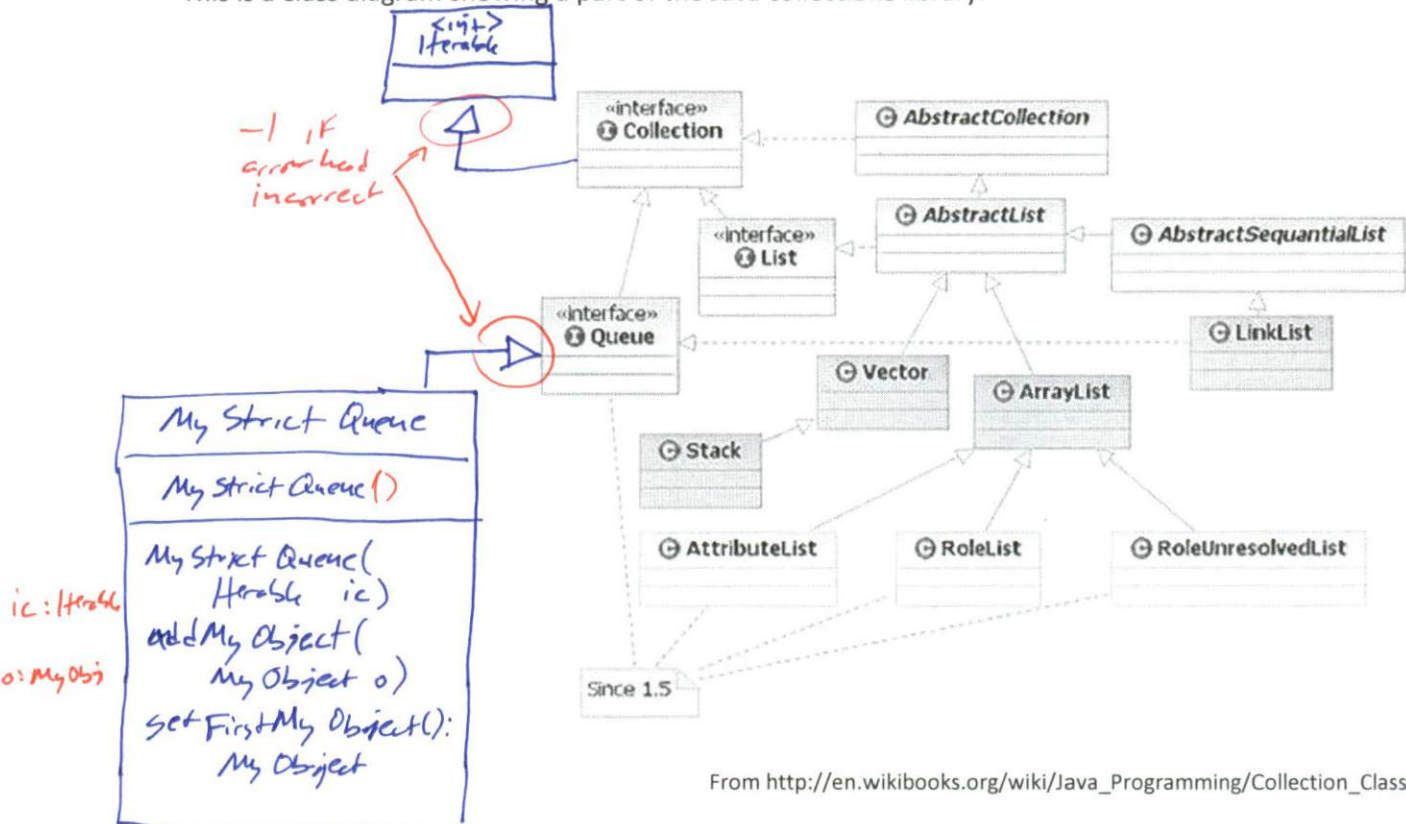


interfaces usually only have two sections, since this diagram had 3 I did not deduct

4) Class diagram problem (20 points) –

This is a class diagram showing a part of the Java collections library.



From http://en.wikibooks.org/wiki/Java_Programming/Collection_Classes

2/5 A) What is the parent class of Vector? Abstract List

2/5 What are the child class(es) of Vector? Stack

4/6 B) What interface(s) does LinkedList support? Collection, Queue, List 2 per

4/4 C) Collection interface is declared:
`public interface Collection... extends Iterable...`
 Include this information in the diagram.

6 D) Add class MyStrictQueue which is a Collection and a Queue, but not a List. This class includes the following function definitions (include in drawing):

```
private MyStrictQueue();
public MyStrictQueue(Iterable initialCollection);
public void addMyObject(MyObject o);
public MyObject getFirstMyObject();
```

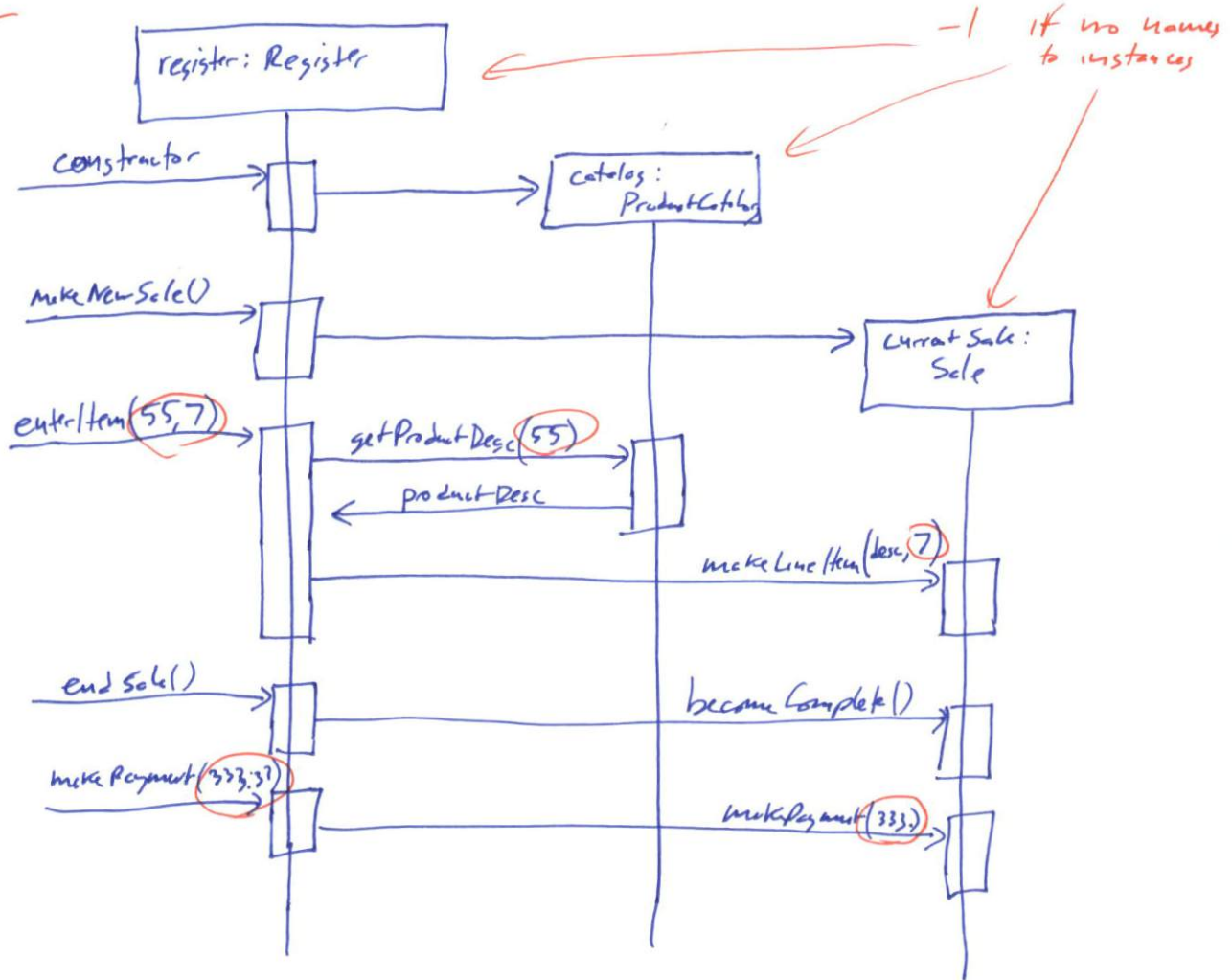
if no ctor: -1
 need to show this somehow -1 if not

-1 if not show UML datatypes

if constructor error went to Register object OK.

This page is extra room for Q3

need to show ctor for some how
-1 if not



25
22.5 - 90%
20 - 80%
17.5 - 70%
15 - 60%

-3 if not show creation of catalog/Sale later in time

-2 if don't show arg numbers tracing through - it helps understand the case

-2 don't show external caller to register well