

More Object Design with GoF Patterns

Shawn Bohner
Office: Moench Room F212
Phone: (812) 877-8685
Email: bohner@rose-hulman.edu



ROSE-HULMAN
INSTITUTE OF TECHNOLOGY

Today's Agenda

- ❖ **More Object Design with GoF Patterns**

- More tomorrow

- ❖ **Design Studio:
Team 12 – XNA Games**

Applying Patterns to NextGen POS Iteration 3

- ❖ **Local caching**
- ❖ **Failover to local services**
- ❖ **Support for third-party POS devices**
- ❖ **Handling payments**

Failover & Performance with Local Caching

❖ What is a *cache*?

How does a cache usually work?

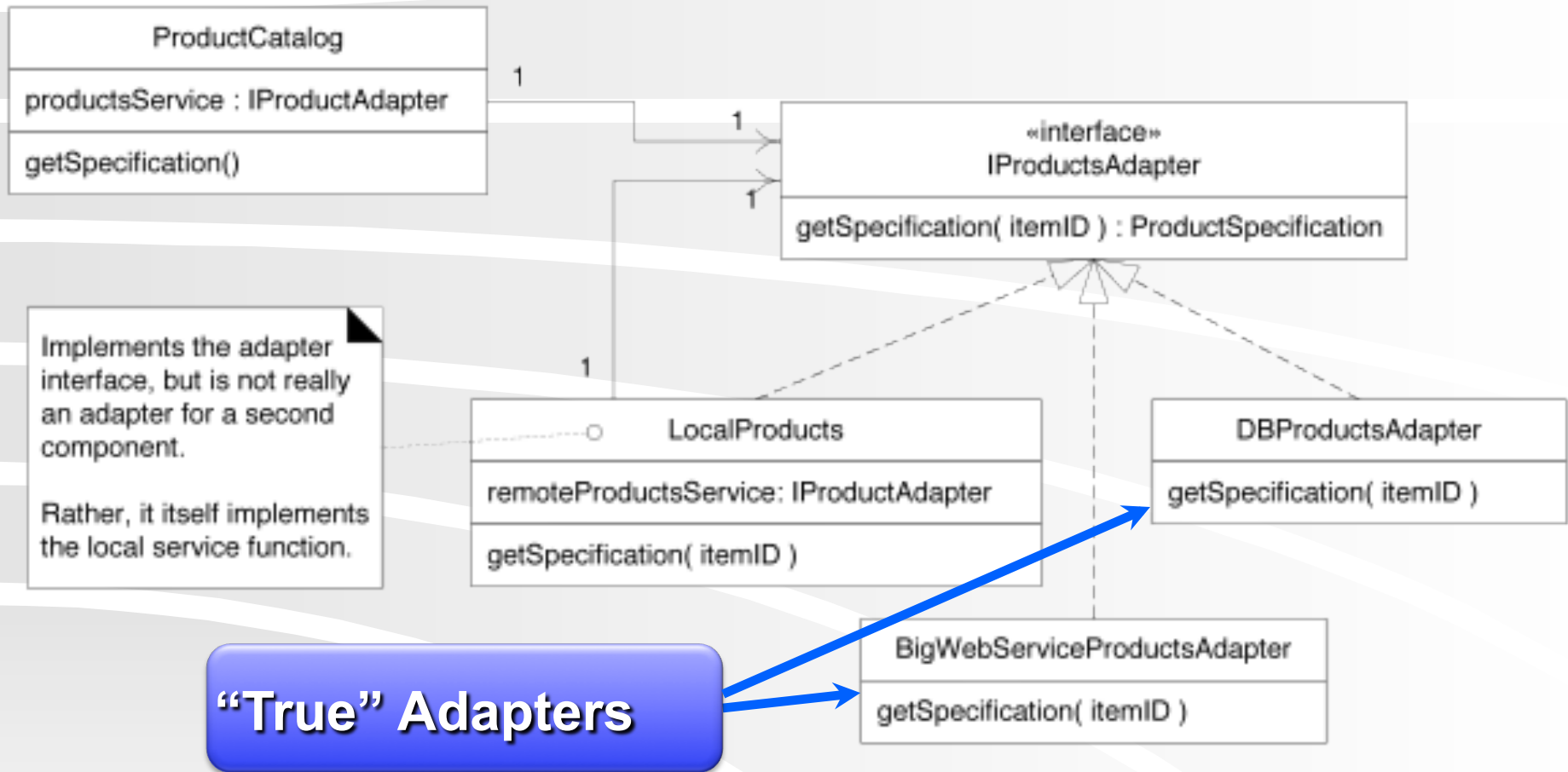
❖ Why use a local cache for NextGen POS?

- Performance
- Improve recoverability

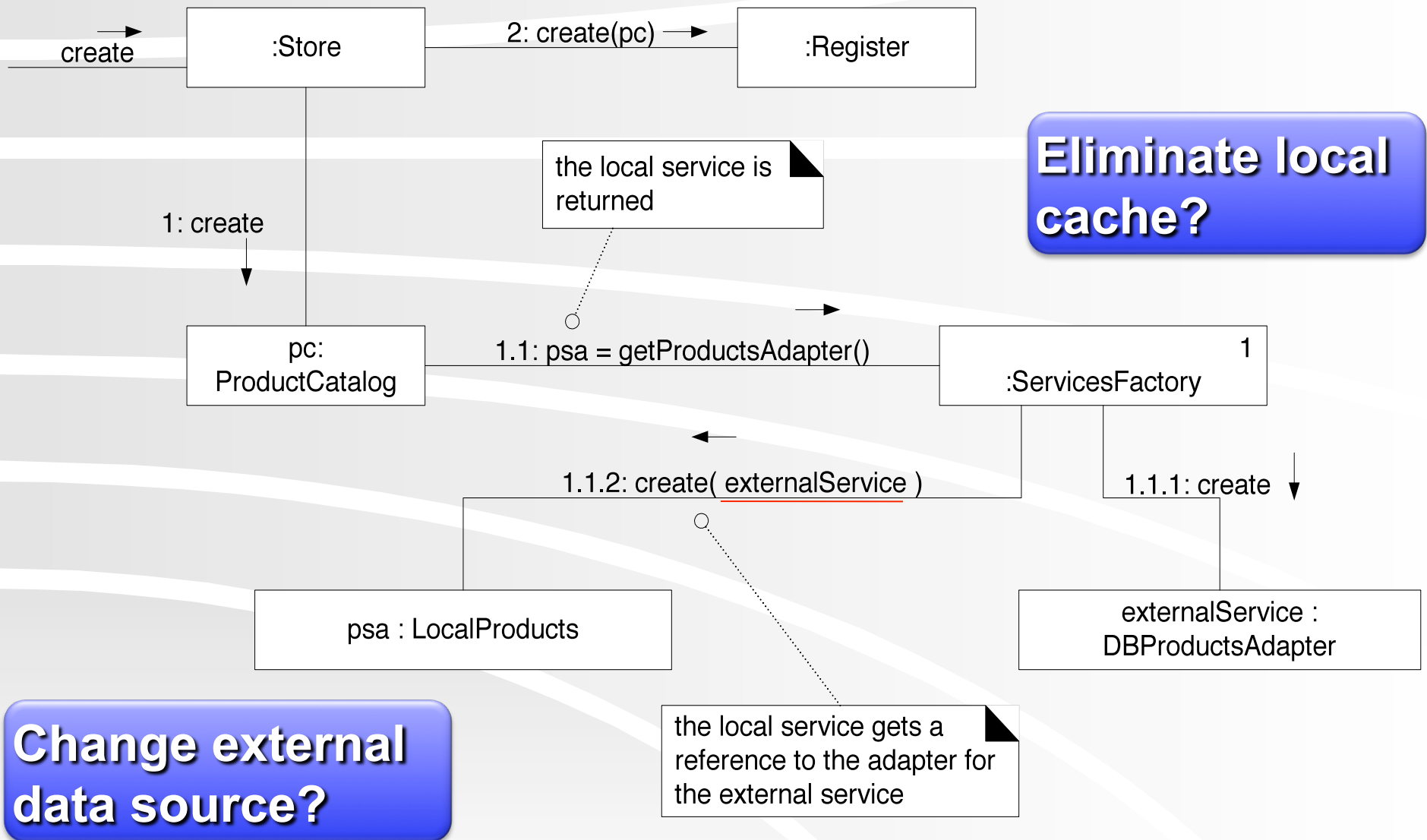
Search Strategy for Product Information

- 1. Look in memory (in map stored by *ProductCatalog*)**
- 2. Look on local hard drive cache**
- 3. Retrieve from remote persistence service**

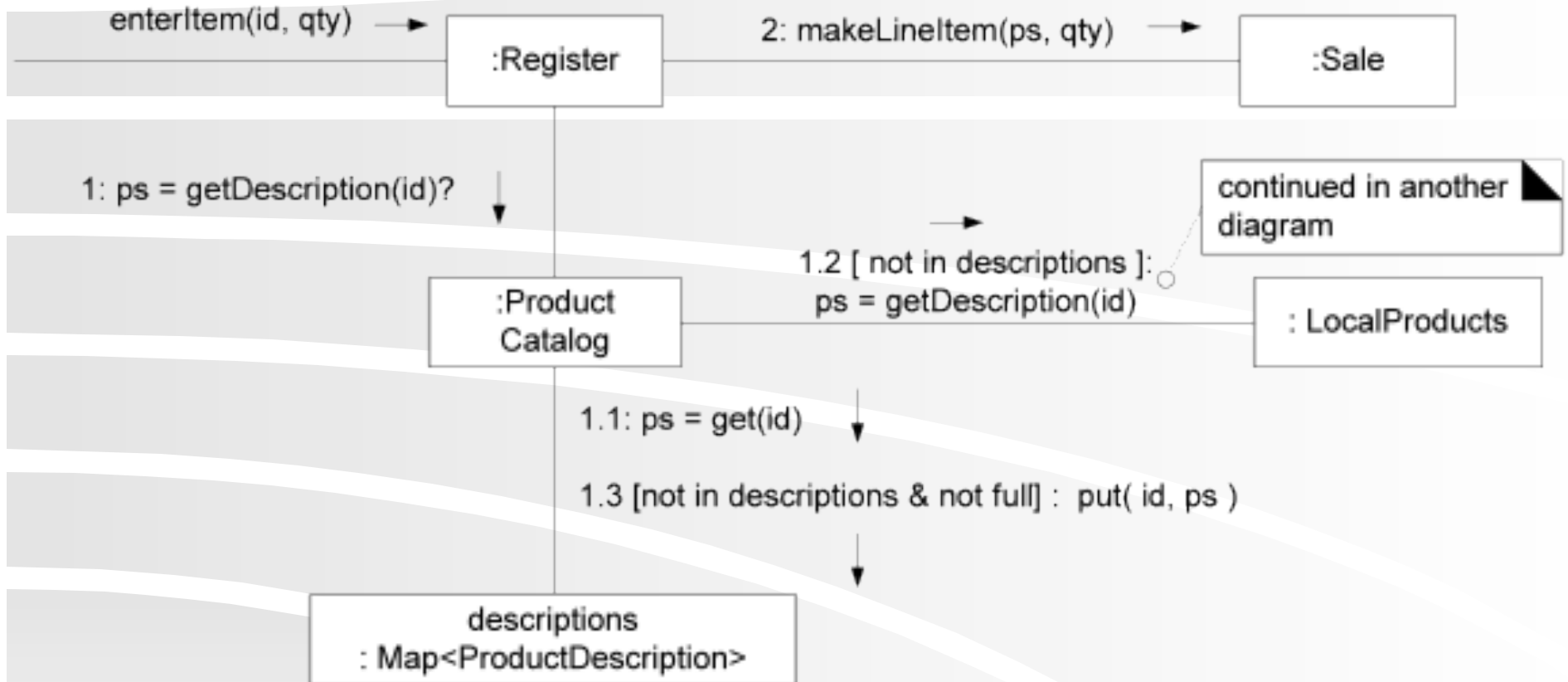
Applying the Adapter Pattern



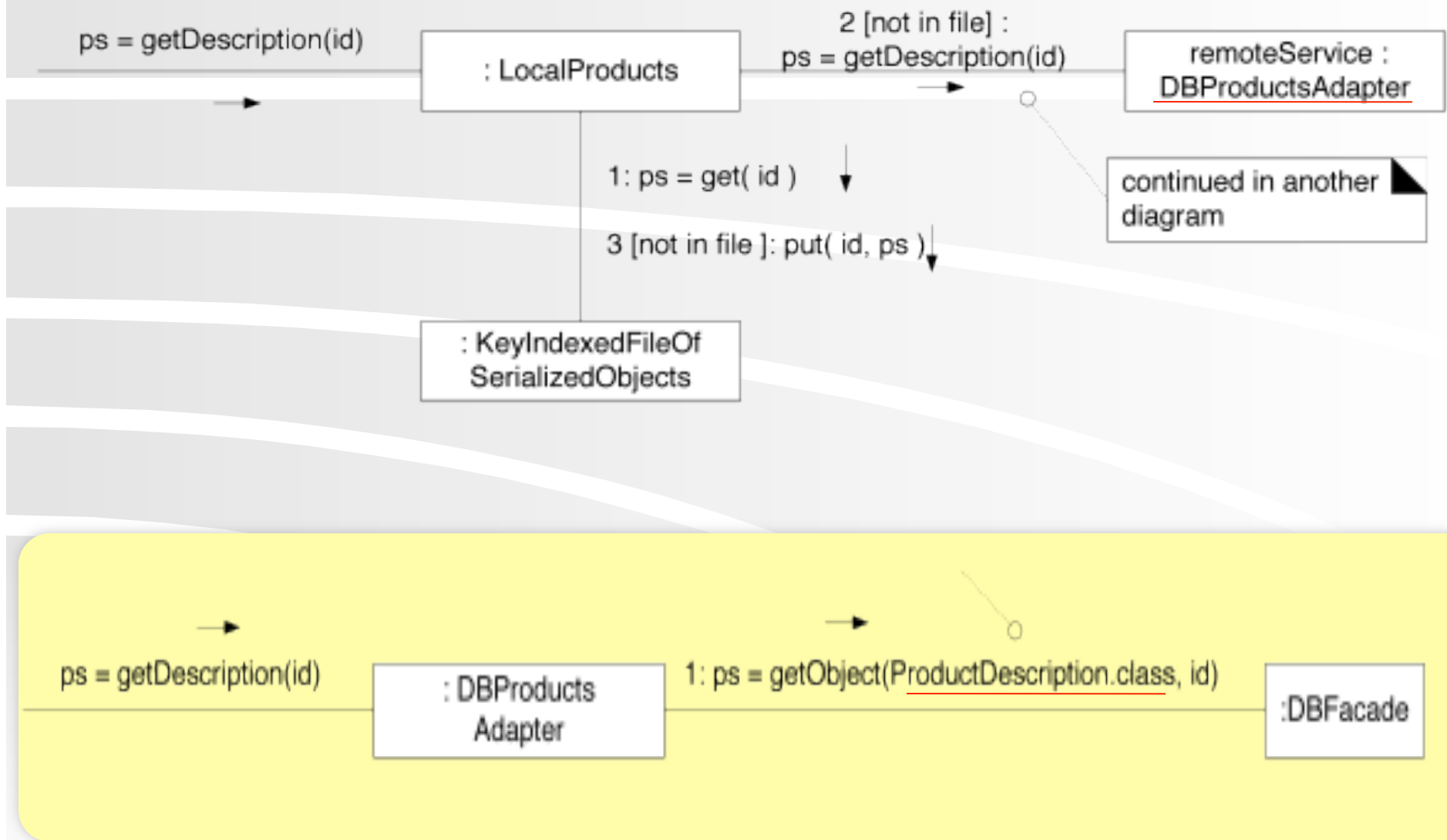
Using a Factory to Set Up for Local Caching



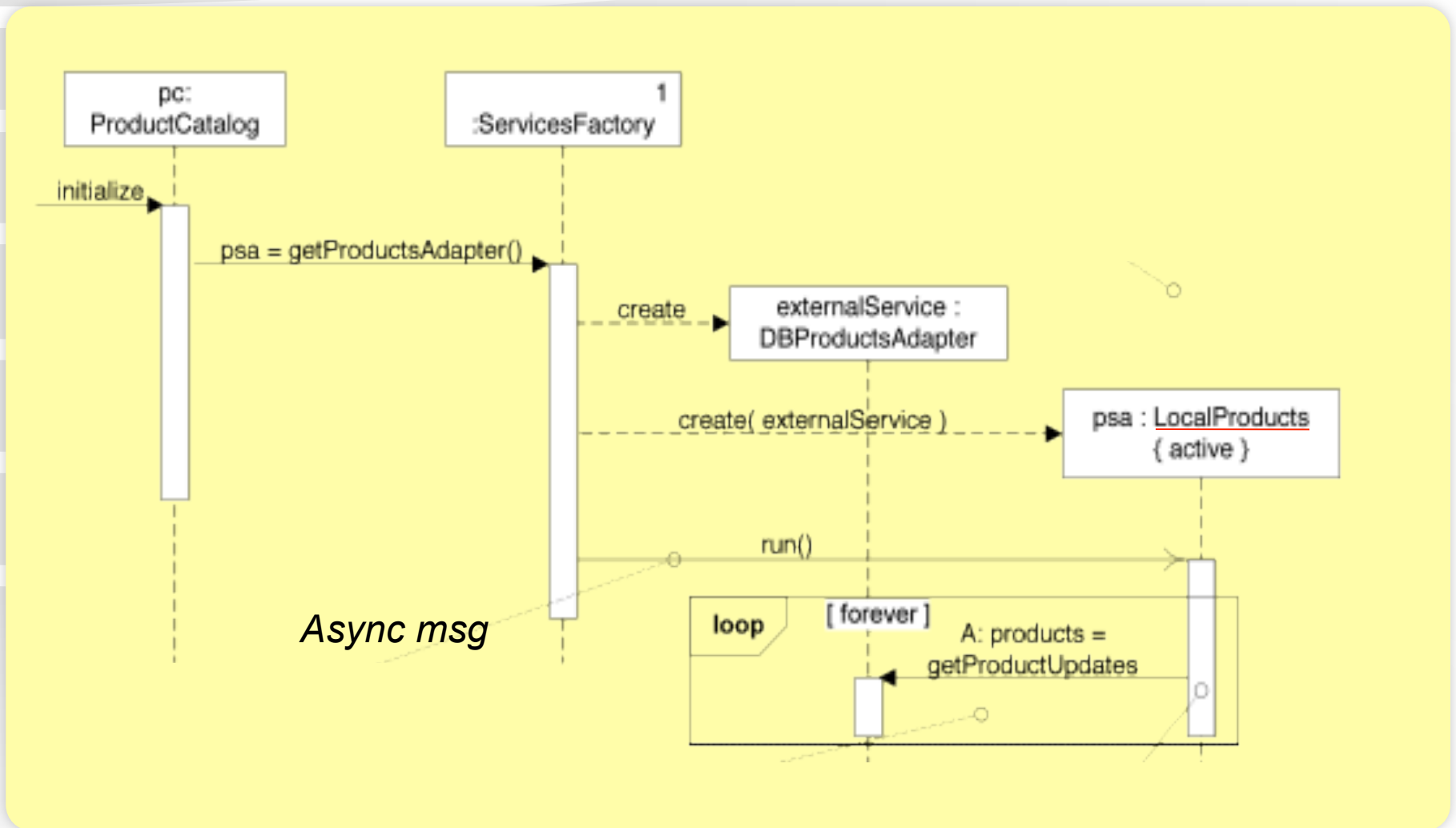
Product Lookup with In-memory Miss



Product Lookup with Local Cache Miss



Using Threads to Freshen the Cache



How's the final iteration going?



Not Invented Here™ © Bill Barnes & Paul Southworth



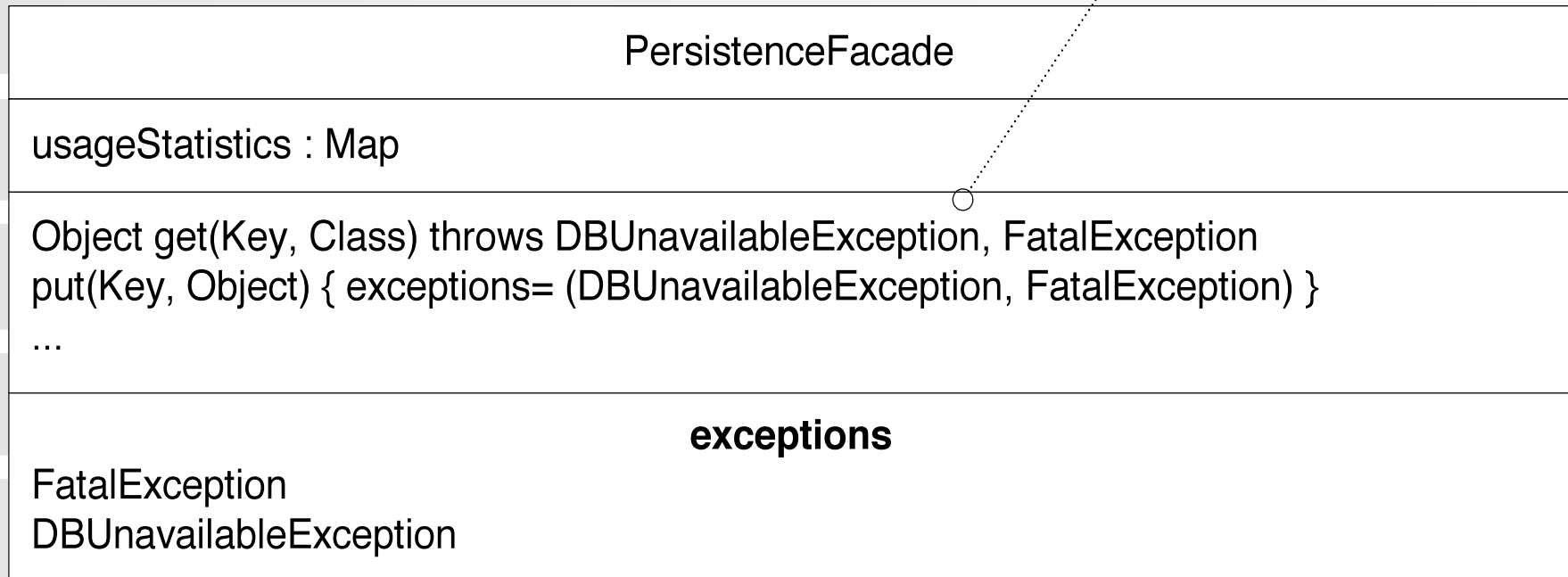
NotInventedHere.com

Used by permission. <http://notinventedhe.re/on/2009-12-28>

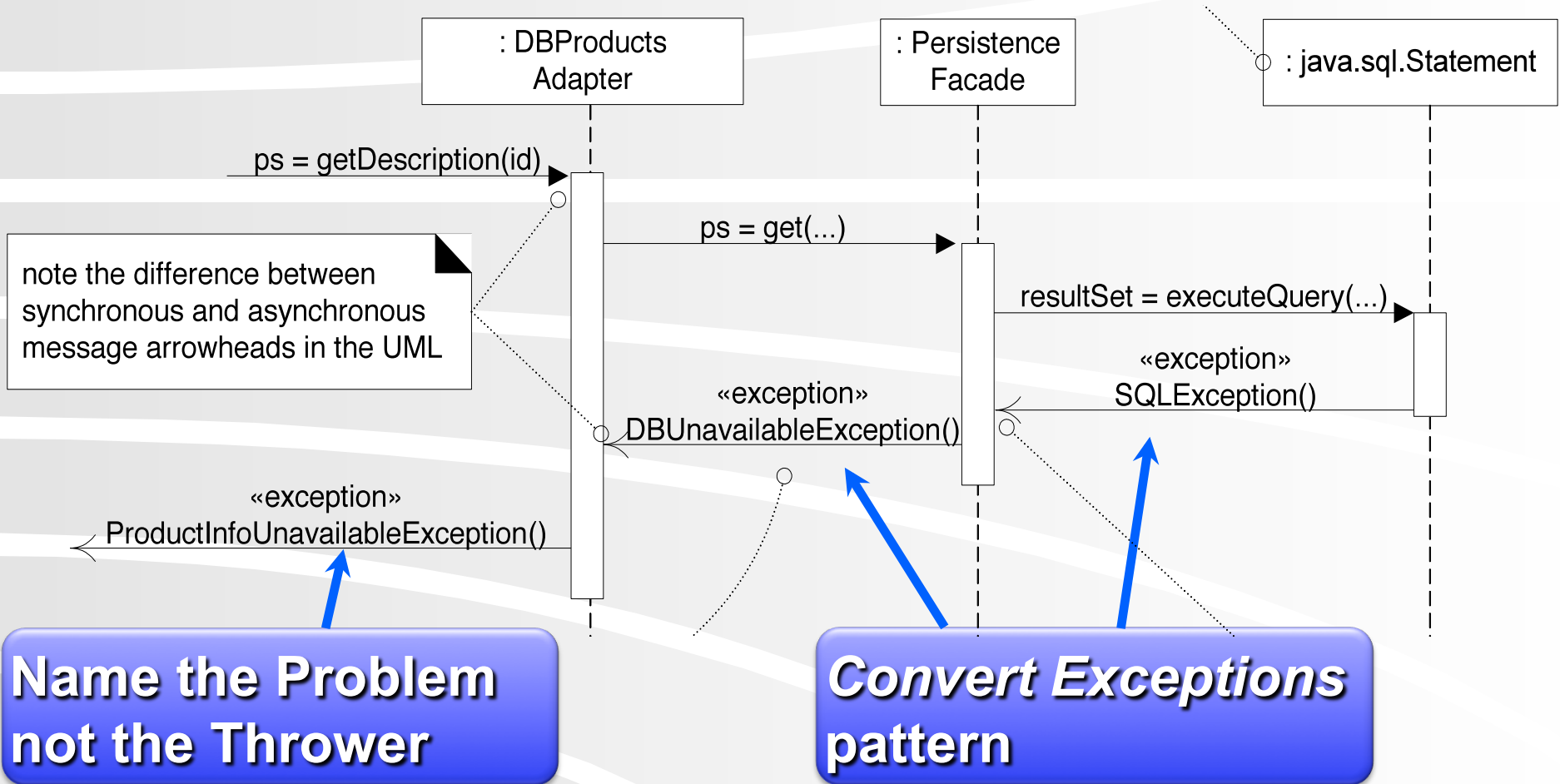
Handling Failure in NextGen POS

What should happen if there is a local cache miss and the external product information service fails?

DCD: Exceptions Caught and Thrown



Showing Exception in Sequence Diagrams



How should NextGen POS handle this exception?

❖ Common exception handling patterns

- Use a central error logging object to record all exceptions for diagnosis by developers
- Use a standard, application-independent, non-UI object to notify users
 - Can delegate to multiple different UI notifications
 - Protected Variation for changes in reporting

Failover to Local Services with a Proxy

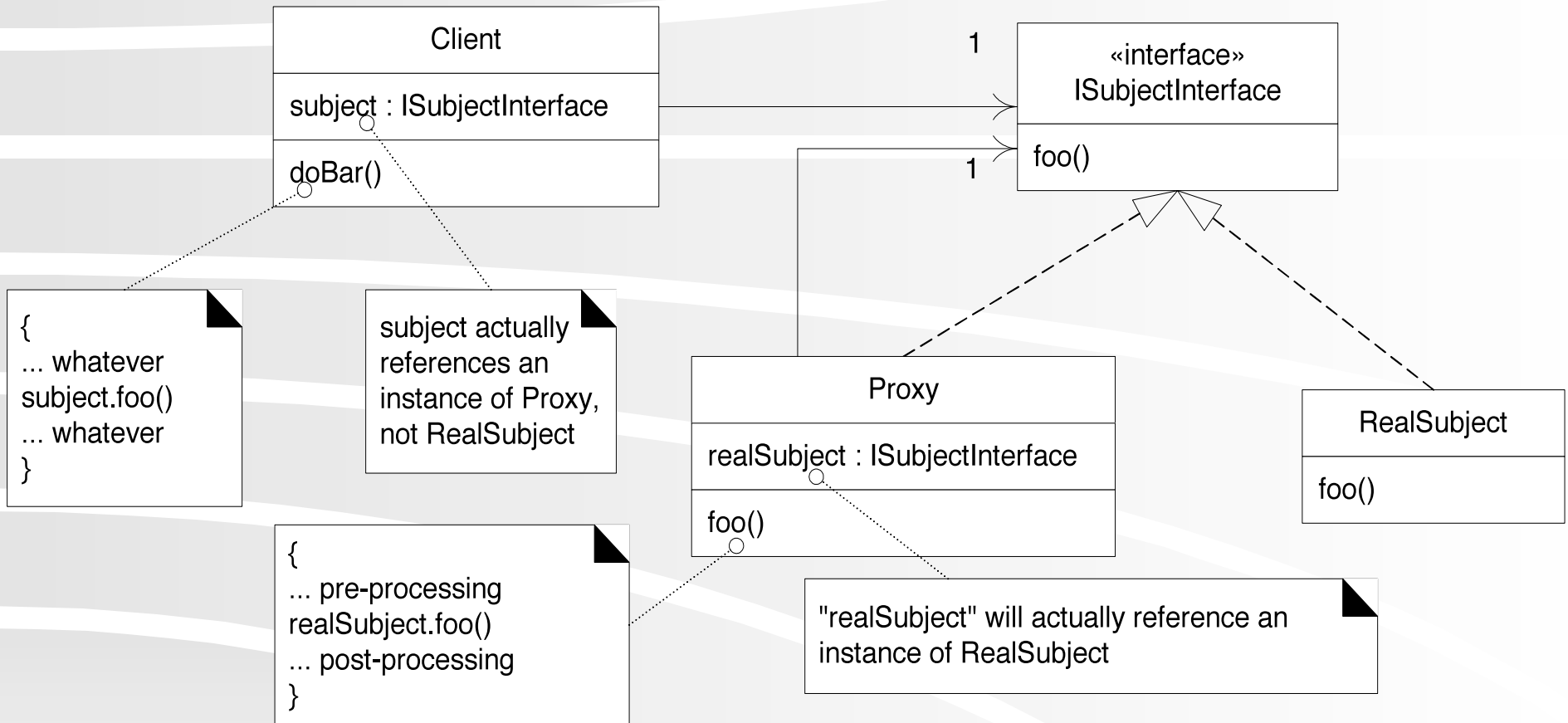
Proxy GoF Pattern

Problem: How do we control access to some *subject* object if we want to avoid giving direct access?

Solution: Add a level of indirection with a *proxy* object that implements the same methods as the *subject* and conditionally delegates to it.

Q4,5

Structure of the Proxy Pattern

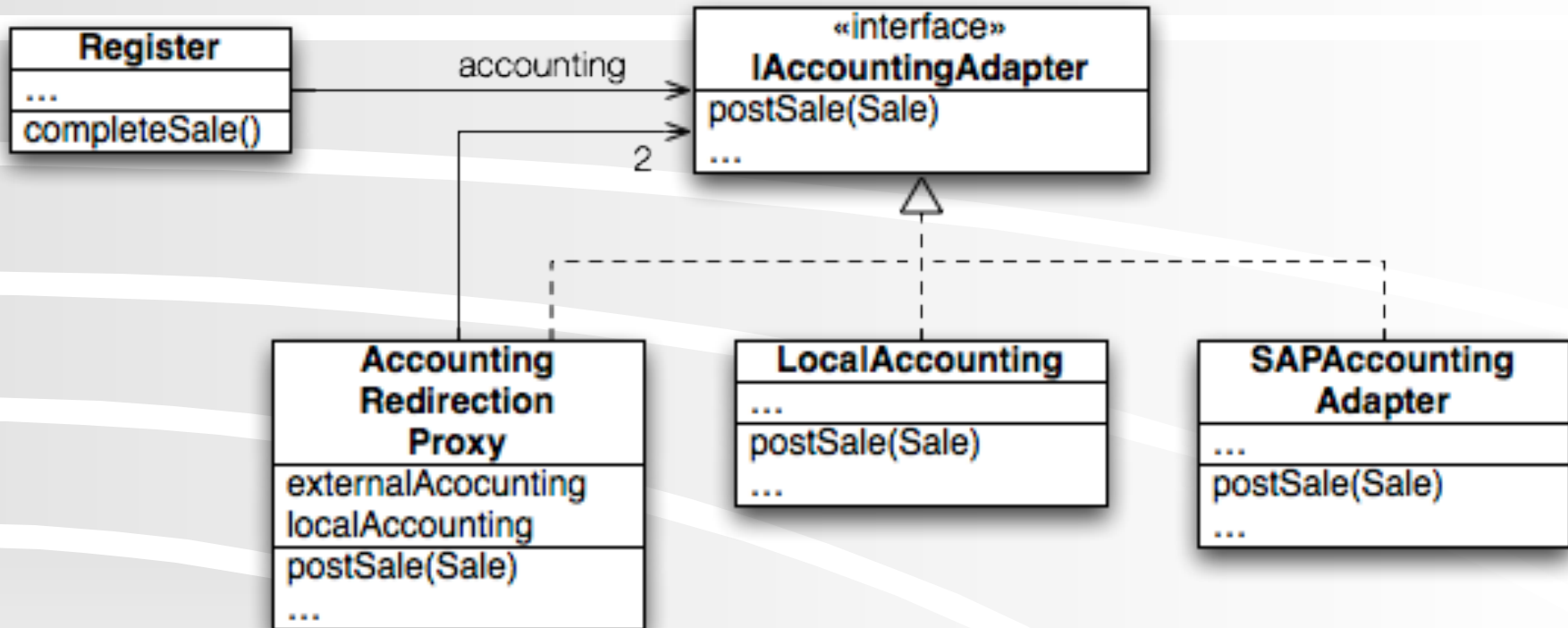


Proxy in NextGen POS

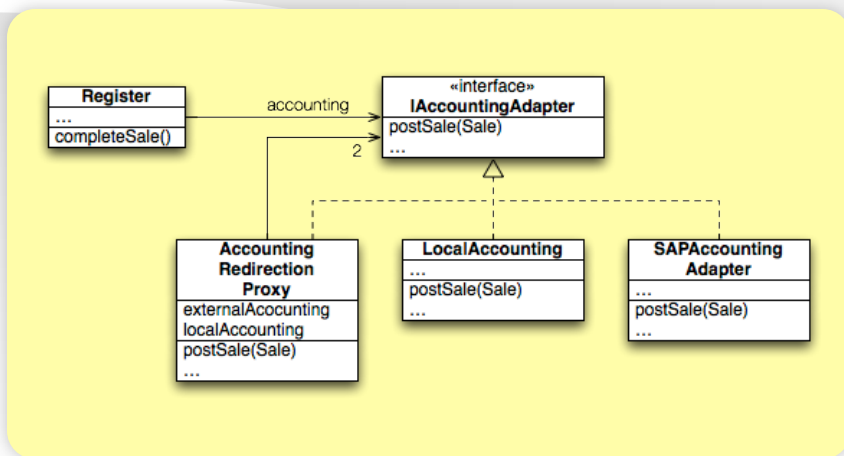
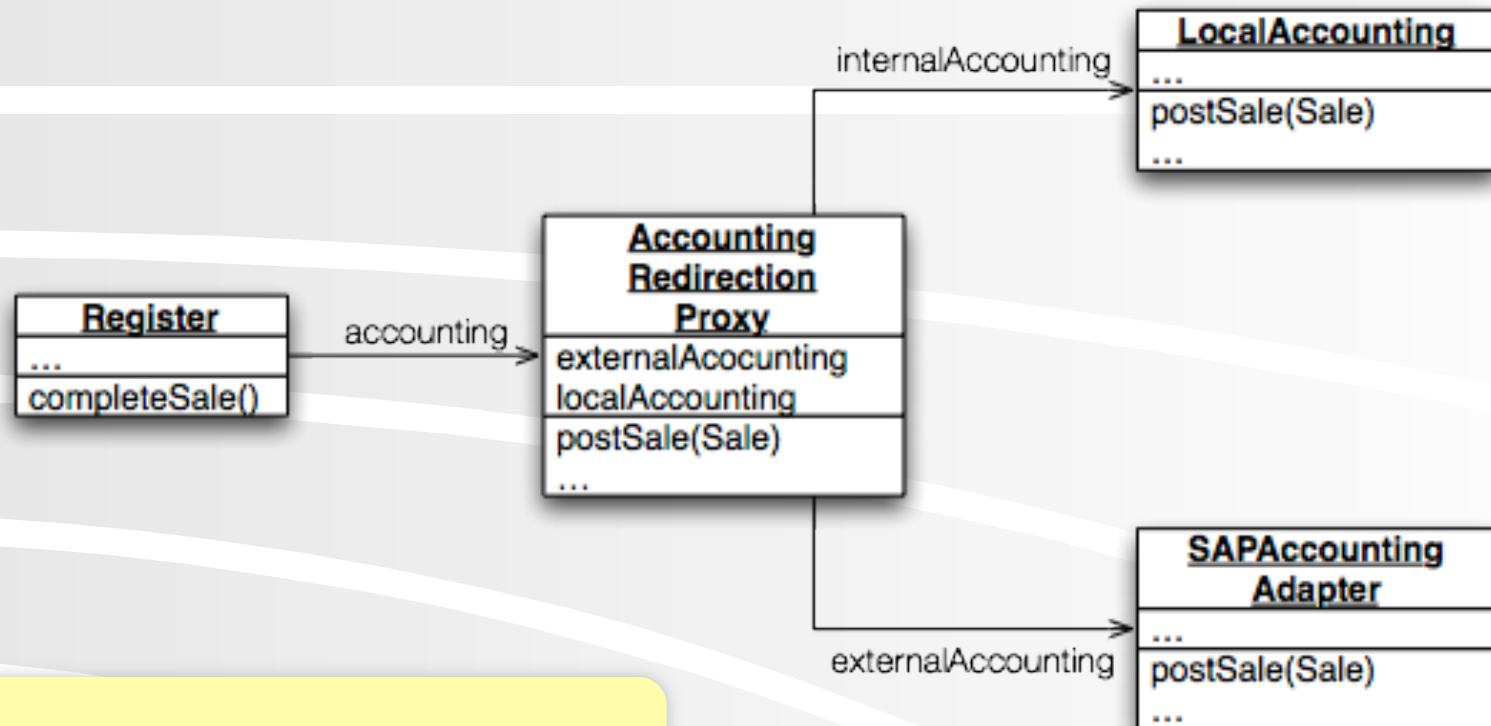
❖ Posting sales to the accounting service

- Send *postSale(Sale)* to a *redirection proxy*
- *Proxy* attempts to post to external service
 - If it fails, then *proxy* stores result locally

Proxy in NextGen POS — DCD



Proxy in NextGen POS — Object Diagram



Design Studio:

Team 12: Security API

~5 minutes:

Team describes problem and current solution (if any)

~3 minutes:

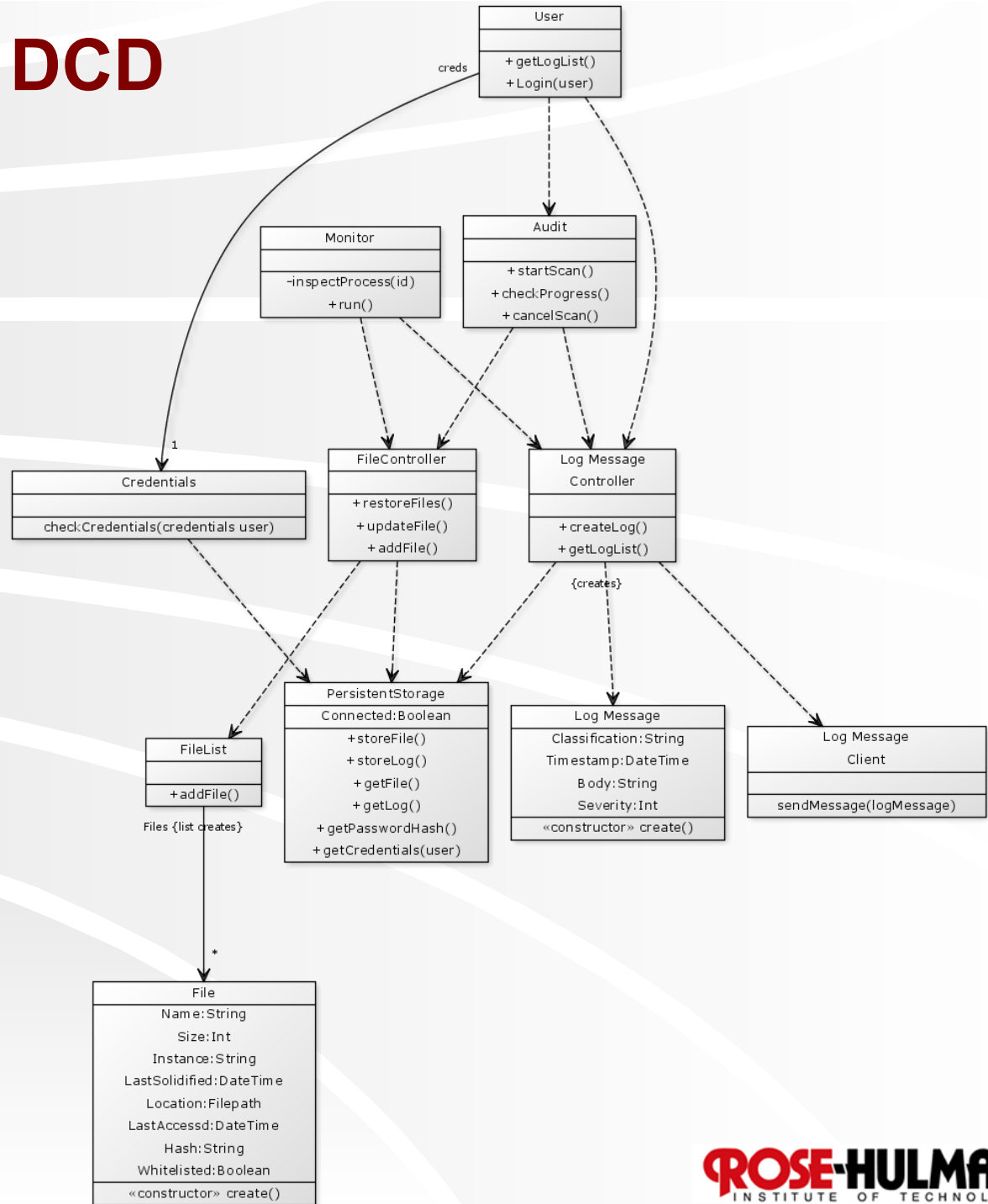
Class thinks about questions, alternative approaches

Q7

~12 minutes:

On-board design with team modeling and instructor advising/facilitating

Security API DCD



Homework and Milestone Reminders

- ❖ **Read Chapter 37**
- ❖ **Milestone 5 – Iteration 3 Junior Project System with finalized Design Document**
 - **Preliminary Design Walkthrough on Friday, February 12th, 2010 during project meeting.**
 - **Final Project Due by 11:59pm Friday, February 19th, 2010.**

CD for Proxy to failover to local storage if the remote accounting service is down

