

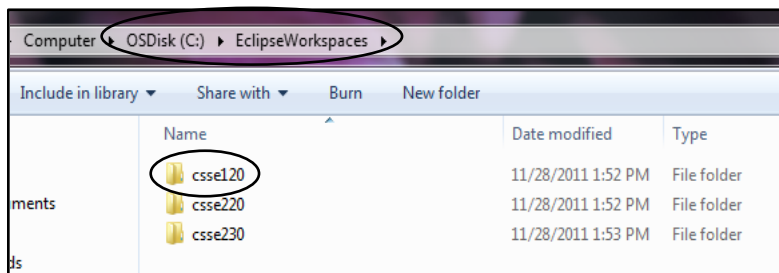
# Your first Eclipse session, by Pictures

Here's an introduction to your first Eclipse session, by pictures. It assumes that your Eclipse and related items are set up correctly. If not, your mileage may vary.

Follow the pictures (and associated instructions), one by one. **Turn to a neighbor or an assistant quickly whenever you get a bit lost** – most of this is much easier to *show* than to explain.

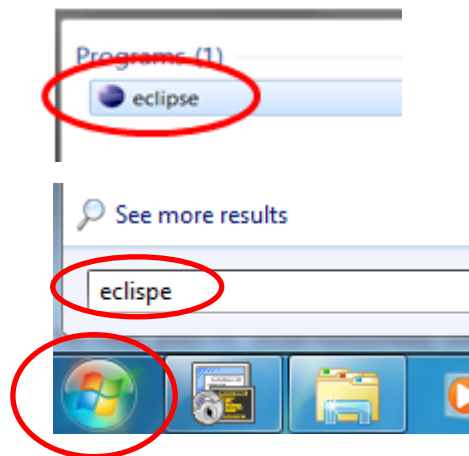
## 1. Confirm that you have a folder:

**C:\EclipseWorkspaces\csse120**



**If you are retaking this course**, make a new, empty folder for this term. Ask your instructor for how to switch back and forth between them and how to Import the Preferences into the new one.

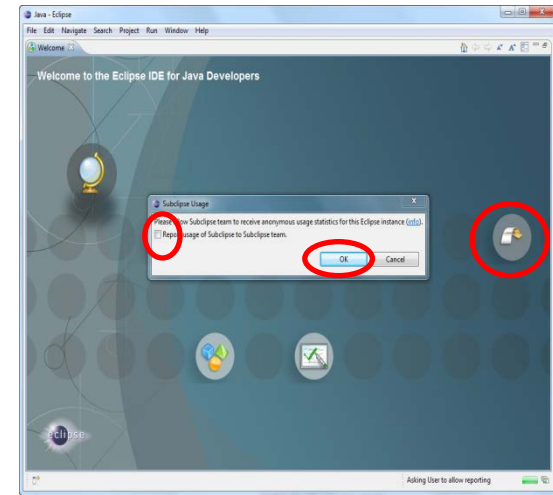
## 2. Find Eclipse via the Start Menu and open (run) it.



## 3. You *may* see this Welcome screen and you *may* see the pop-up on it.

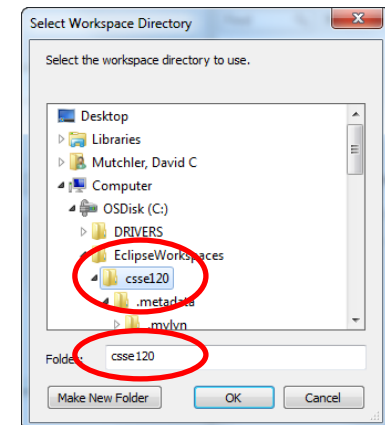
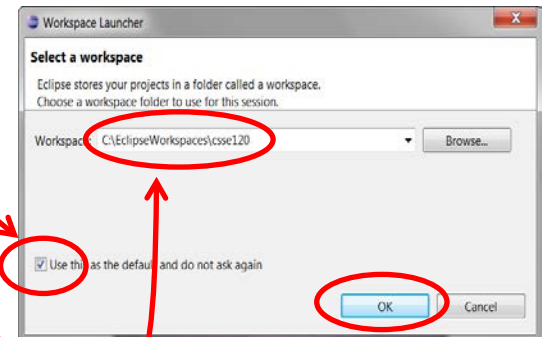
- If you see the pop-up, **UN-check the box, then press OK.**
- Then select the **ribbon-like arrow** on the far right to continue.

If you do not see this screen, no problem, just continue to the next step.



## 4. You should see this window when Eclipse starts up the first time.

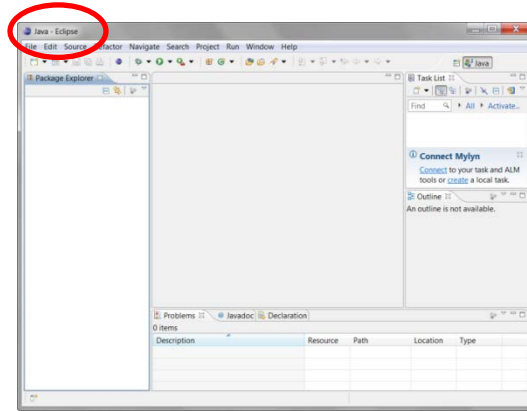
- **Check the box !!!**
- **Be sure that the Workspace is exactly as in the picture.**
  - If it isn't, *Browse* to select the correct folder.
- Then press **OK**.



Aside: If you are ever in doubt about whether you are in the right workspace, for example if Eclipse does not ask you for a workspace the first time you open it, choose **File ~ Switch Workspace**, then **Other**, then **browse** (per the picture to the right) for the **C:\EclipseWorkspaces\csse120** folder. Eclipse will then shut down and re-open in the right workspace.

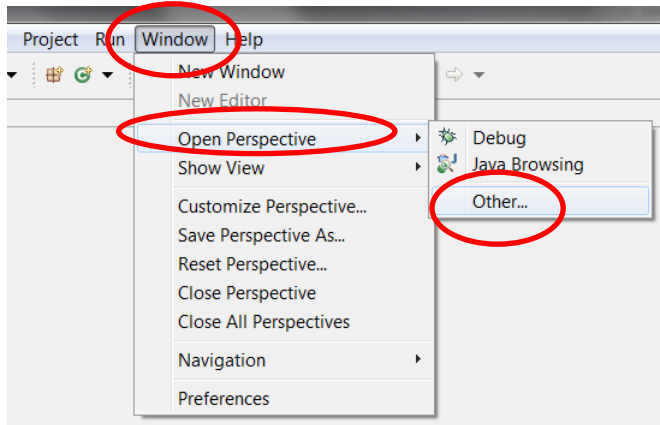
This is probably next.

- This is the Java perspective.
- Our next step will make the **PyDev 120** perspective the default hereafter.



5. Choose **Window ~ Open Perspective ~ Other**

to open the PyDev 120 perspective as shown in **this and the next** picture.

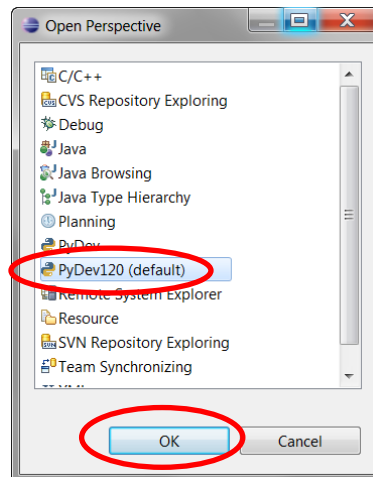


6. Continuing the previous step, select

**PyDev 120 (default)**

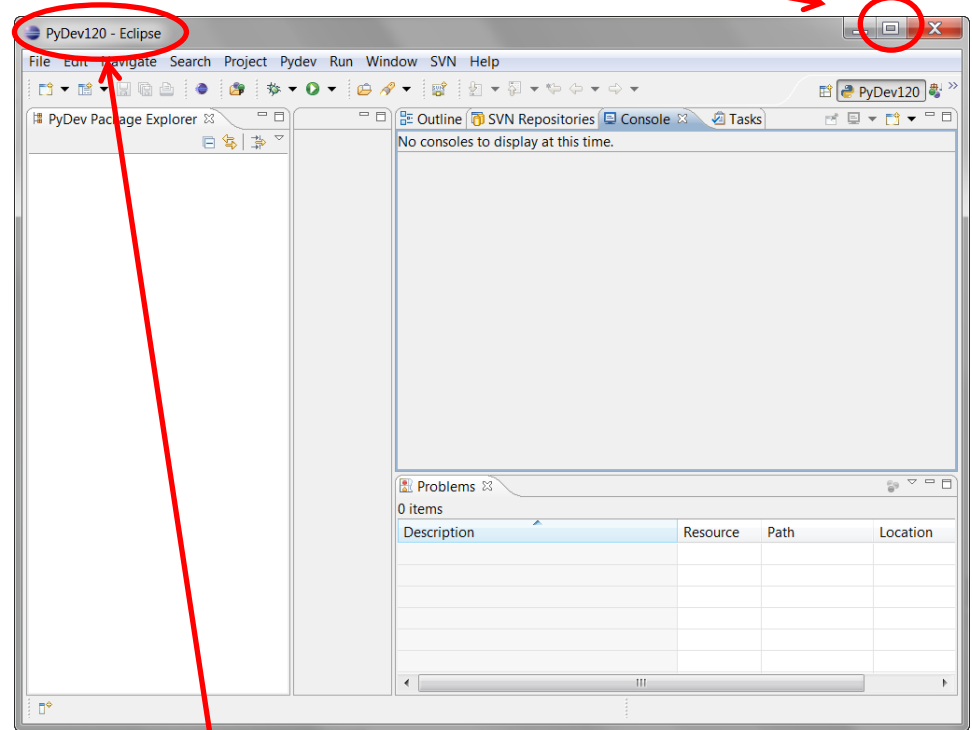
and then **OK** to complete opening the PyDev 120 perspective.

**If PyDev 120 is NOT one of your options, follow the instructions in this [PyDev 120 handout](#).**



7. You'll see something like this – the exact window sizes will vary.

- **Maximize your window (make it big).**



- Do all your Python work in the PyDev 120 perspective. Always make sure that you see PyDev 120 as circled.

**Congratulations! You have successfully entered Eclipse, ready to work in Python!** The next time that you start Eclipse, it will ordinarily start right where you left off (in the PyDev120 perspective).

8. **One more step:** Way down on the taskbar (bottom of your screen), **right-click on the Eclipse icon to**

**Pin the Eclipse icon to the taskbar**

so that you can open it easily in the future.

