

To obtain the *PyDev 120* Perspective:

1. Download the relevant file for your version of Eclipse (Juno or Indigo):

- www.rose-hulman.edu/class/csse/binaries/csse120-tools/Preferences-Juno.zip
- www.rose-hulman.edu/class/csse/binaries/csse120-tools/Preferences-Indigo.zip

Place its sole unzipped file:

Preferences-Juno.epf or
Preferences-Indigo.epf

in any convenient place.

Juno is the most current version of Eclipse. The 2012-2013 and 2011-2012 laptops came with *Indigo*. Anything older should be replaced by *Juno*.

Do the remaining steps inside Eclipse:

2. To be sure that you are in the

C:\EclipseWorkspaces\csse120

workspace, choose

File ~ Switch Workspace, then **Other**,

and then browse for the

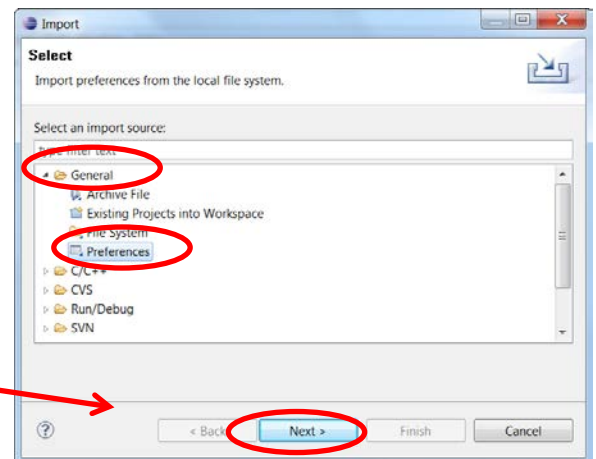
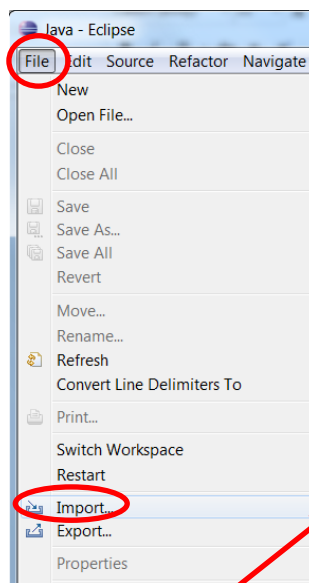
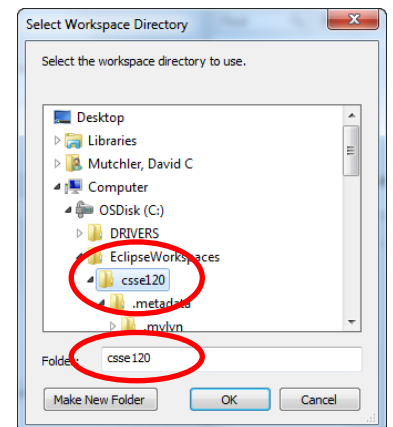
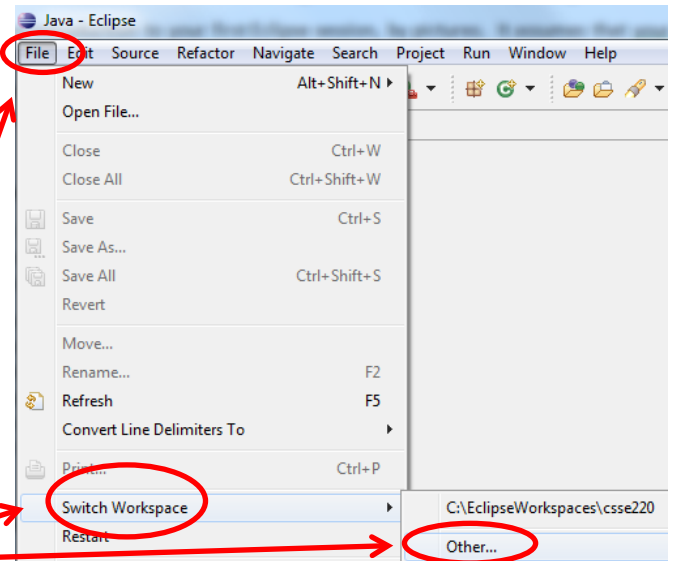
C:\EclipseWorkspaces\csse120

folder. *Eclipse will then shut down and re-open* in the right workspace.

3. Back in the *Workbench* in Eclipse, select:

File ~ Import

4. In the *Import* dialog that opens, expand **General**, select **Preferences** below that, and press **Next**.

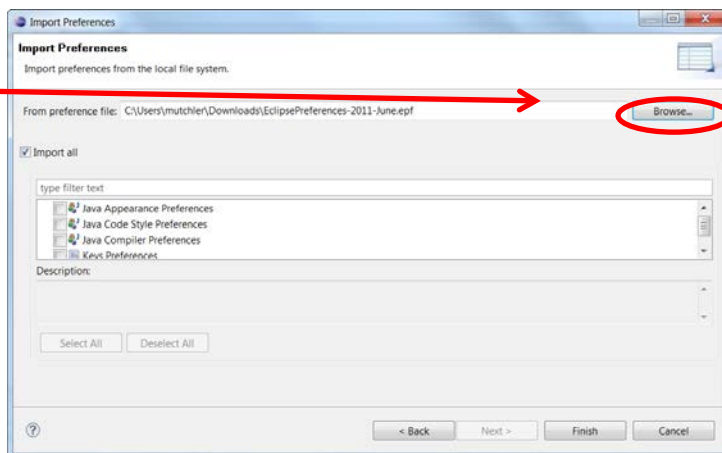
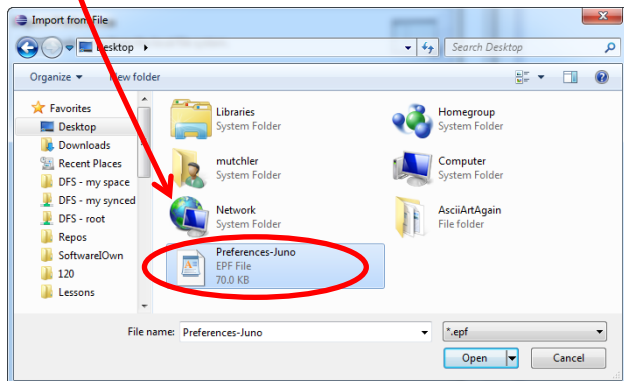


5. In the *Import Preferences* dialog that opens, select **Browse**.

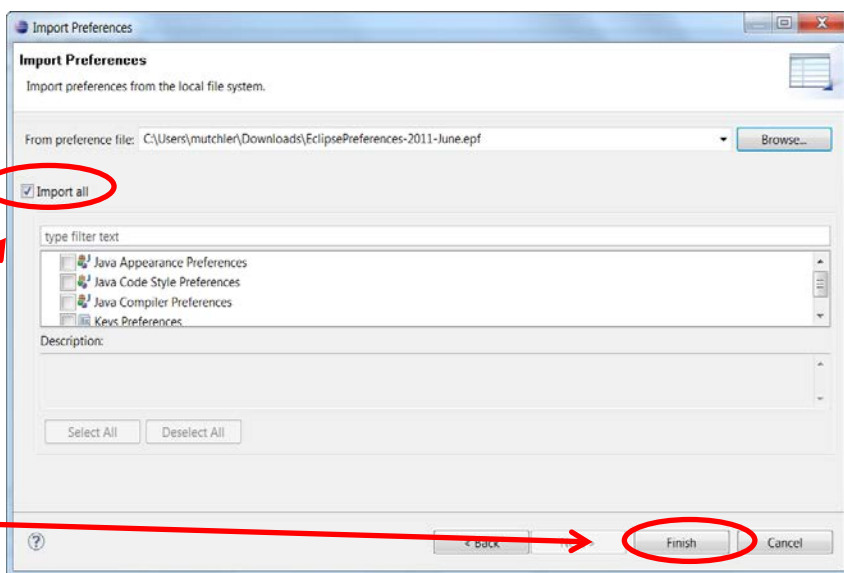
Then in the *Import from File* dialog that opens, browse for and select the

Preferences-Juno.epf or
Preferences-Indigo.epf

file that you unzipped and saved above.



Back in the *Import Preferences* dialog, **check *Import all*** then select **Finish**.



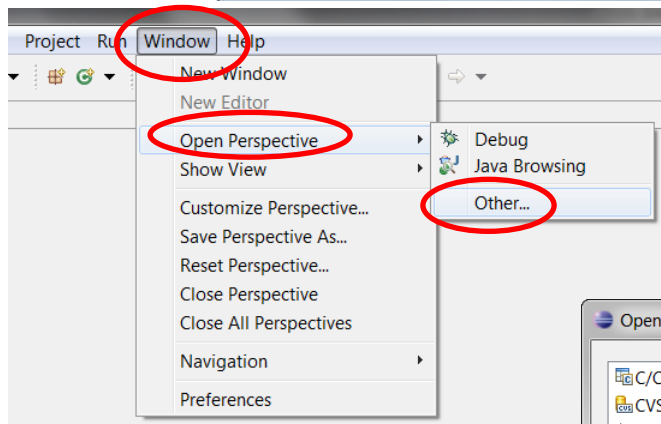
6. You can now select:

Window

~ **Open Perspective**

~ **Other...**

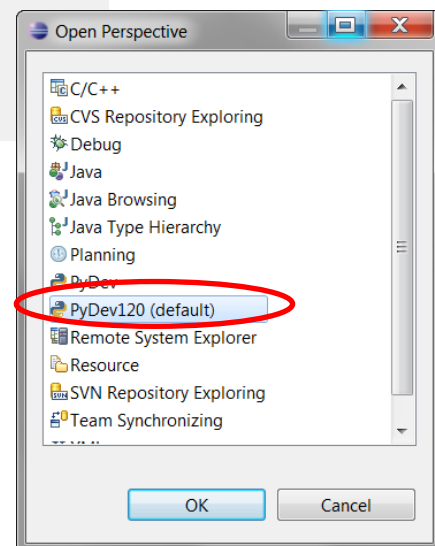
to open the **PyDev120** perspective as shown in **this and the next** picture.



7. Continuing the previous step, select

PyDev120 (default)

and then **OK** to complete opening the PyDev120 perspective.



8. If you wish, you can delete the **.epf** file that you unzipped and saved above.