

To obtain the PyDev120 Perspective:


Do this ONLY if you do not already have the PyDev120 Perspective. The Fall 2011 freshman laptops came with it.

Inside Eclipse:

1. If you are not already in the

C:\EclipseWorkspaces\csse120

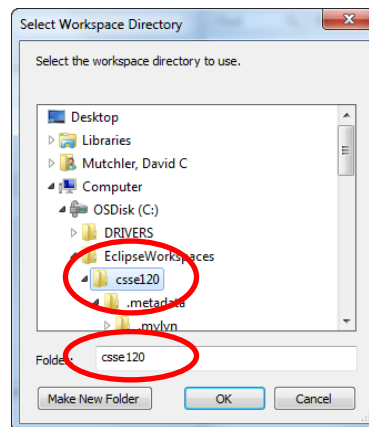
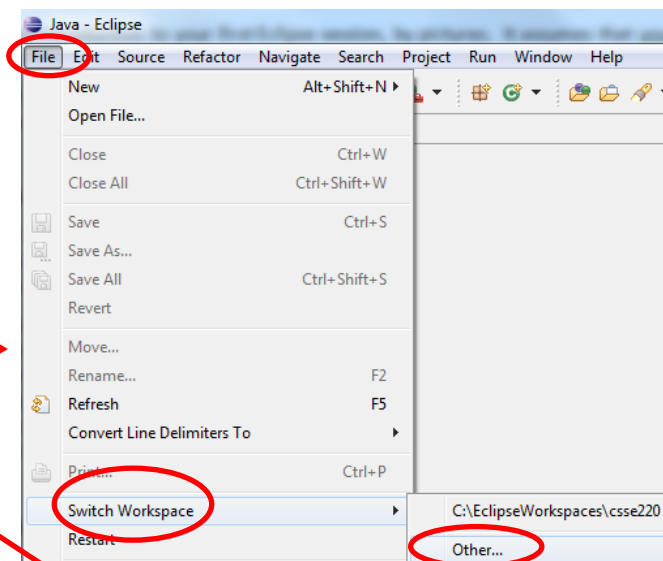
workspace, choose

File ~ Switch Workspace, then **Other**, 

then browse (per the picture below and to the right)

for the **C:\EclipseWorkspaces\csse120** folder. Eclipse will then shut down and re-open in the right workspace.

(If you are not sure what workspace you are in, it does not hurt to switch per the above instructions.)



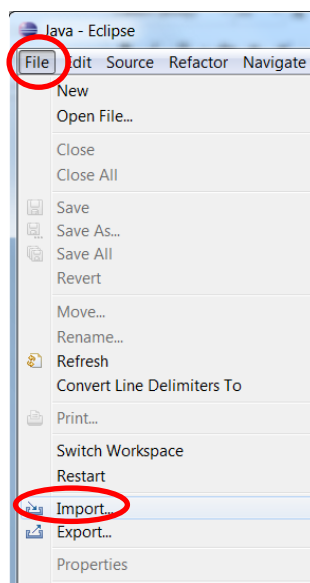
2. Unzip this zipped Eclipse preferences file for **csse120**:

<http://www.rose-hulman.edu/class/csse/binaries/Eclipse/EclipsePreferences-csse120-2011-06-28.zip>

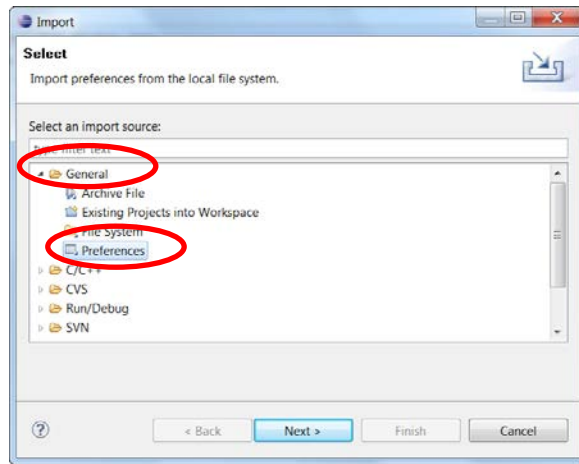
placing its sole unzipped file
(*EclipsePreferences-csse120-2011-06-28.epf*)
in any convenient place.

3. In the *Workbench* in Eclipse, select:

File ~ Import

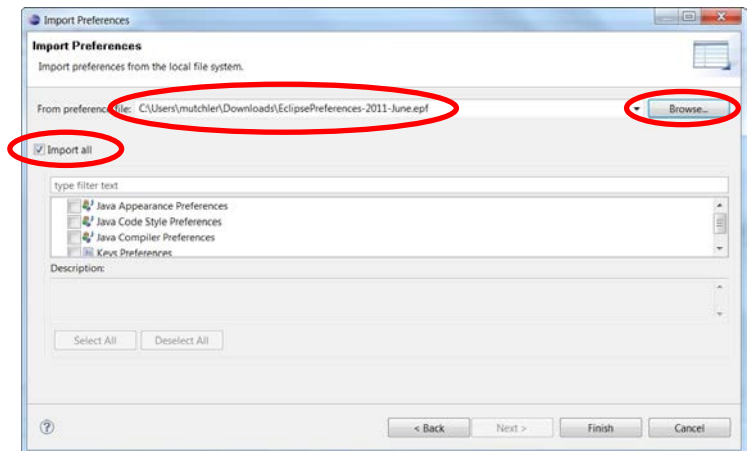


4. In the *Import* dialog that opens, expand **General**, select **Preferences** below that, and press **Next**.



5. In the *Import Preferences* dialog that opens, select **Browse** and select the *EclipsePreferences-csse120-2011-06-28.epf* file that you unzipped and saved above.

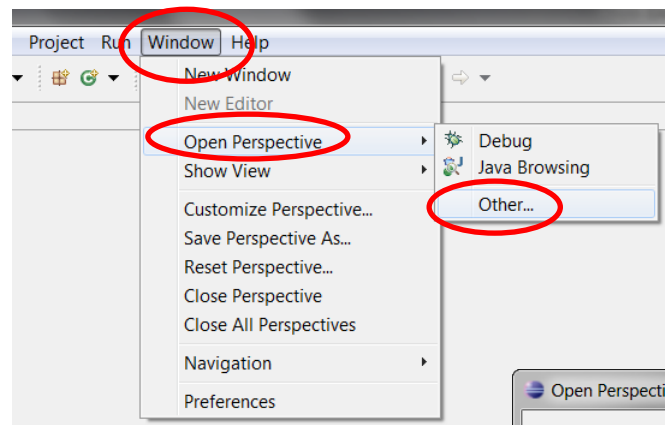
Back in the *Import Preferences* dialog, **check Import all**, then select **Finish**.



6. You can now choose:

Window
~ **Open Perspective**
~ **Other**

to open the **PyDev120** perspective as shown in **this and the next** picture.



7. Continuing the previous step, select **PyDev120 (default)** and then **OK** to complete opening the PyDev120 perspective.

8. If you wish, you can delete the *EclipsePreferences-csse120-2011-06-28.epf* file that you unzipped and saved above.

