
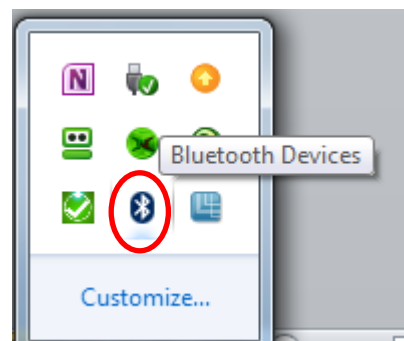
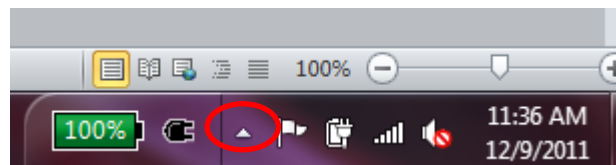


How to connect to a Create robot via Bluetooth

1. **Do you have a BlueTooth icon in the Notification area of your Taskbar?** 
(See the pictures to the right as needed.)

If so, skip to the next step.

If not, ask your instructor for help.



2. **Turn on your robot, with its BAM attached.**

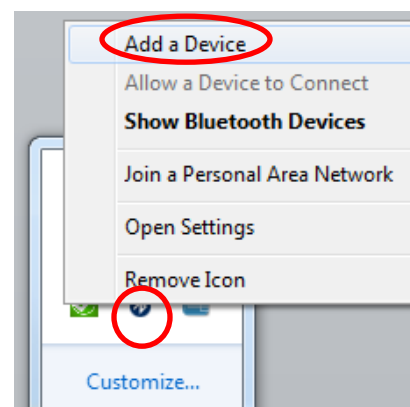
Note the last 4 characters of the ID taped to the BAM.

3. **Are you connecting to a BAM that you have previously connected to and stored on your computer?**

If so, skip to the next step.

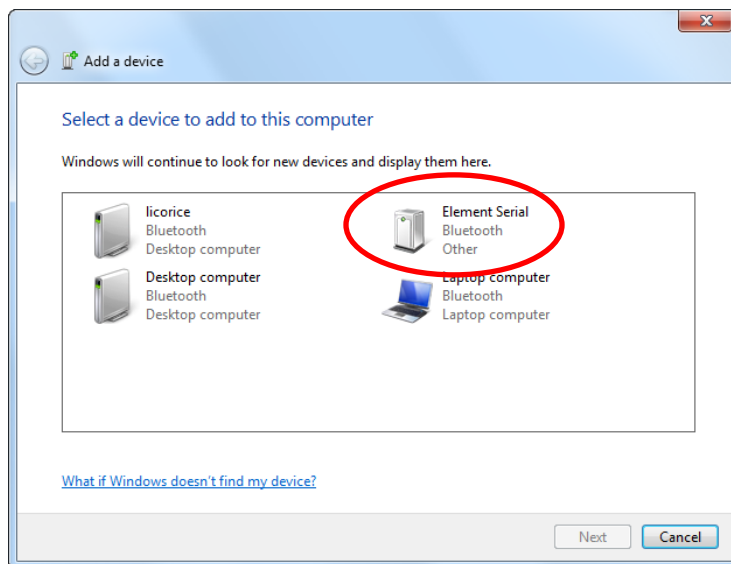
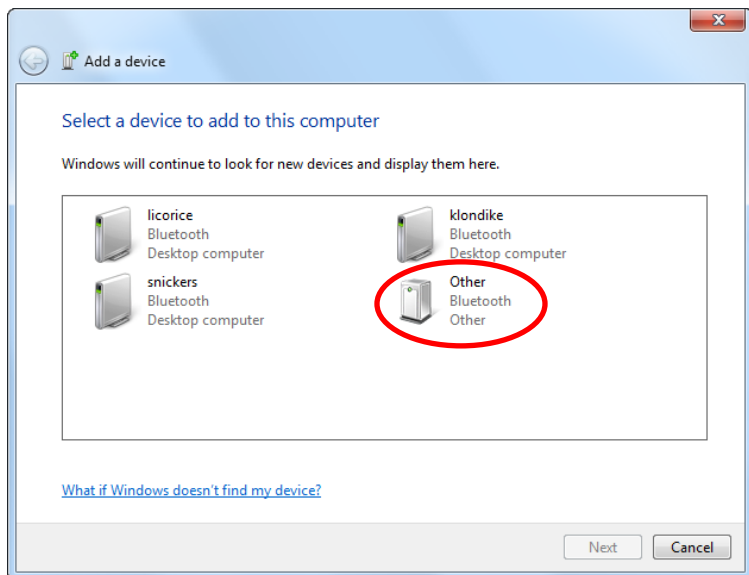
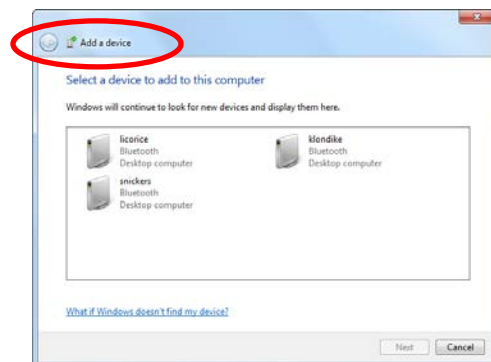
If not:

- a. Click on your BlueTooth icon and select **Add a Device**. This brings up the *Add a device* dialog shown below and to the right.



- b. An icon for the BAM will show up in the *Add a device* dialog. It will initially be labeled **Other** but will change to **Element Serial** after 15 seconds or so.

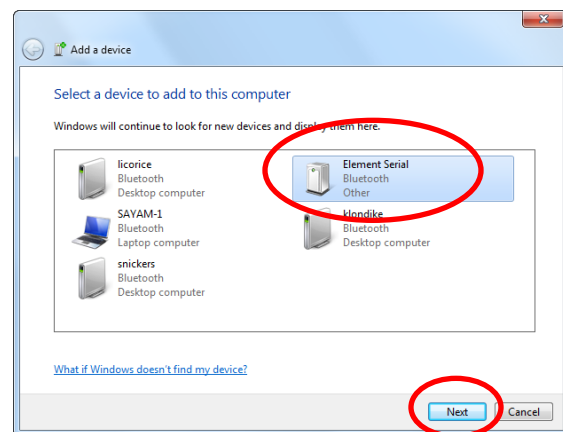
If there is more than one such icon, you have to find the right one by right-clicking on each icon, then Properties, then Bluetooth tab, until you find the right one – the one whose Unique Identifier matches the number on your BAM. See pictures on the last page of this document.



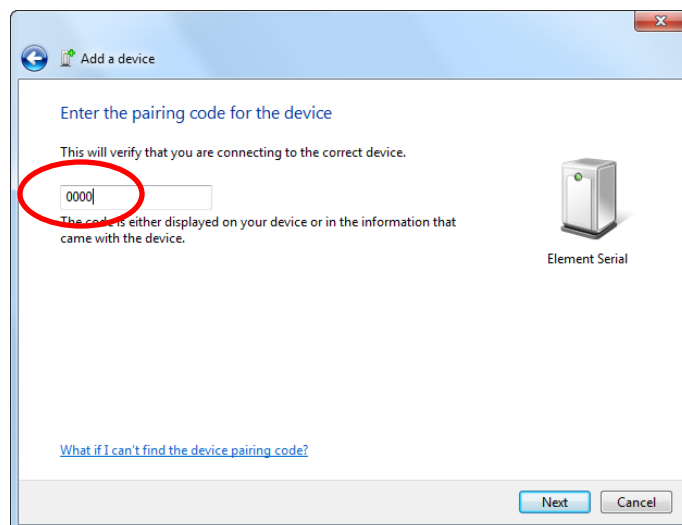
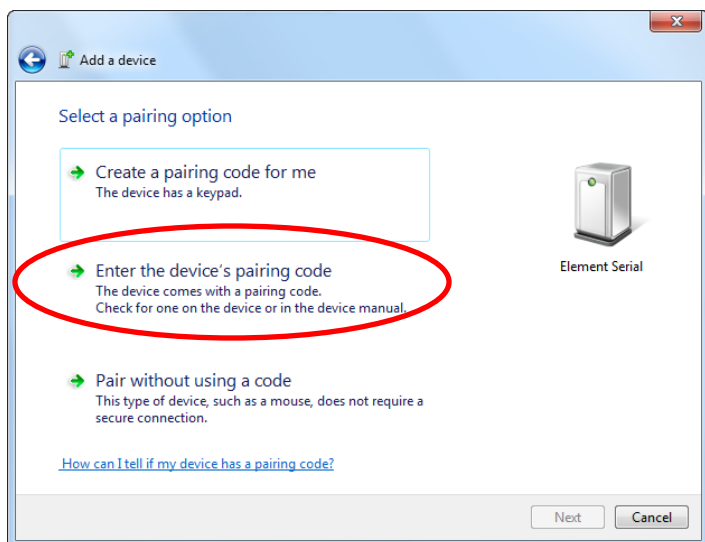
- c. Select the icon for the BAM (either **Other** or **Element Serial**) and press **Next**.

- d. The dialog will say *Connecting to a Device* and then bring up the Dialog below.

CONTINUES ON NEXT PAGE.



- e. Select the **MIDDLE** option and enter **0000** in the dialog that results. Press **Next**.



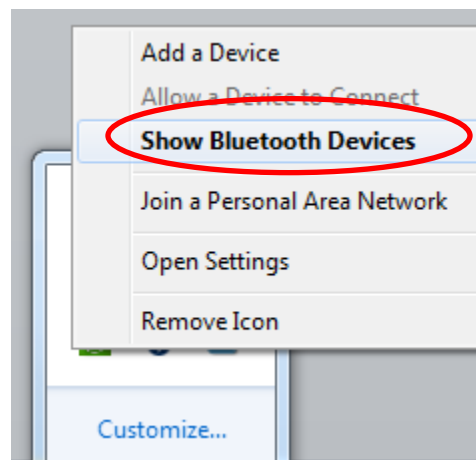
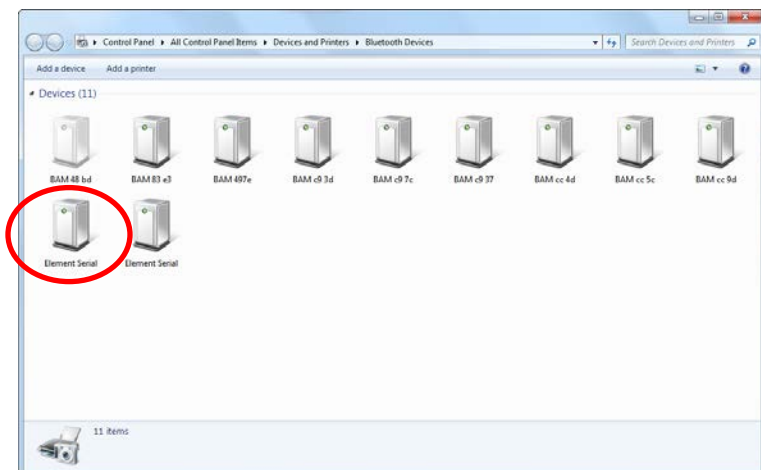
If all goes well, a driver is then installed. Close the window when it says it is done.

If you don't see a message at this point about a driver being installed, the following steps will probably fail. In that case, get help as needed.

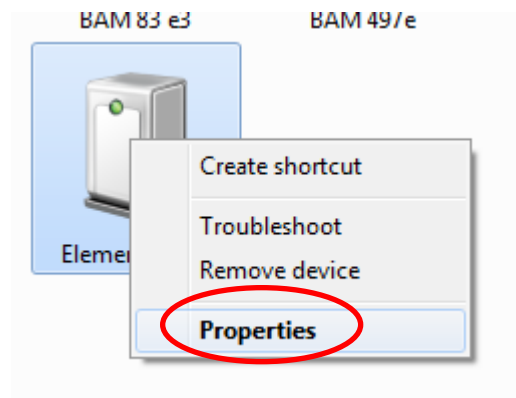
Wait for the driver to be installed before continuing – find the installation progress bar to tell.

4. **Find the COM port for your connection:**

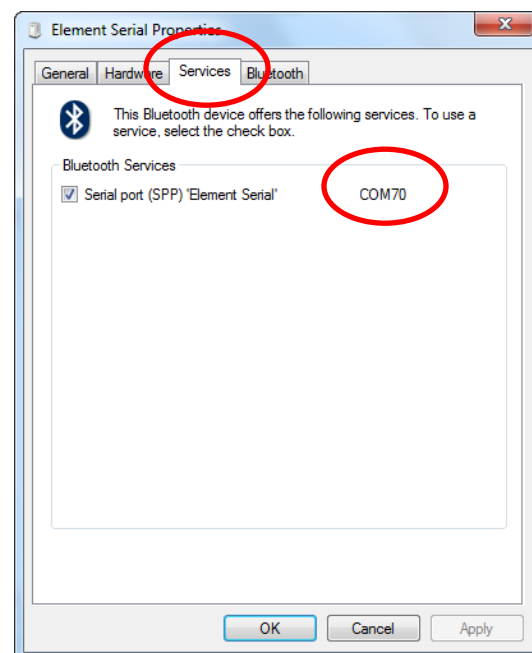
- Click on your BlueTooth icon in your Notification Area and select **Show Bluetooth Devices**.
- This brings up a window that looks like the one shown below. Find your device (your Element Serial / BAM).



- c. Right-click on your device and select **Properties**.



- d. This brings up the dialog shown to the right. Select the **Services** tab. After 15 second or so (sometimes longer), it should show you a COM port. Note the number and use that as your COM port in your Python program.



- e. Select the **Bluetooth** tab. In the slot for a name, type a name that includes the last 4 letters of your BAM.

That way, you can find the device for that BAM easily the next time.

