

APPL Software: Introduction and Purpose

Dr. Evans has created a Maple package that will allow students to further incorporate Maple into their statistics studies. The following procedure will allow you to download and install the package, the accompanying help file, and an example worksheet that will be used to check your installation. If you have not yet taken statistics, it is not necessary that you understand the procedures of the files you install, or the outputs of the worksheet at this point; these are things that you will learn in the class.

A copy of these instructions is located at: <http://www.rose-hulman.edu/~evans/appl/instructions.html>

For more information on the package and its capabilities, please contact Dr. Diane Evans at: evans@rose-hulman.edu or visit her web site at <http://www.rose-hulman.edu/~evans/>.

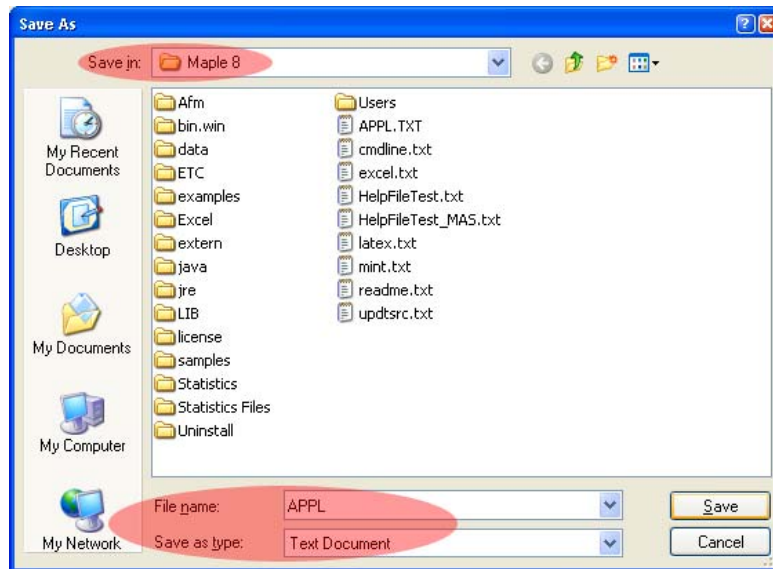
APPL Installation procedure under Windows 98 or XP: *Please begin with step one.*

Downloading APPL.txt



Use this figure for steps 1-3

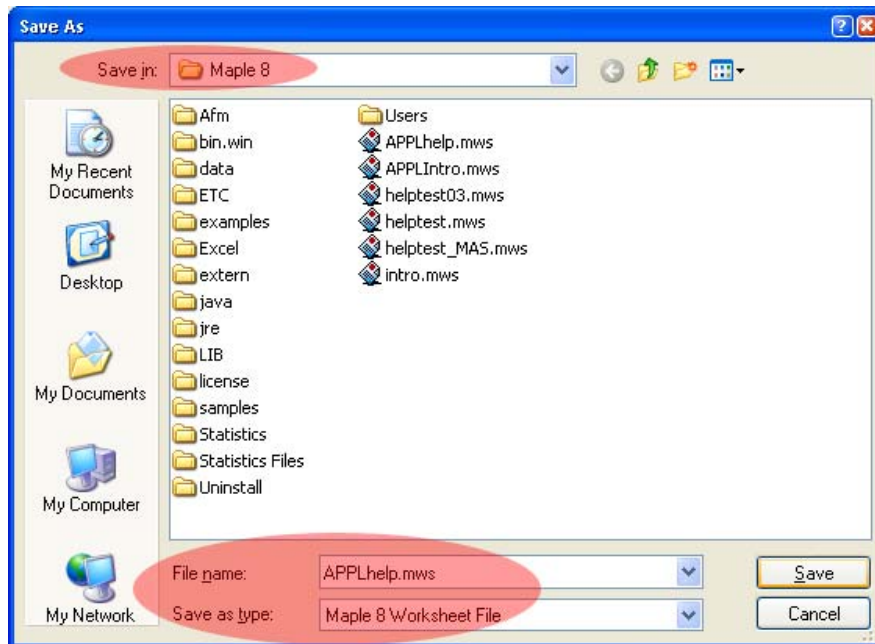
1. In a web browser, type <http://www.rose-hulman.edu/~evans/appl/> in the **Address** bar.
2. Right-click **APPL.TXT**.
3. Select **Save Target As...**



Use this figure for steps 4-7

4. Browse to **C:\Program Files\Maple X**, where **X** is the version number of Maple you are using.
5. Type **APPL** in the **File Name:** field.
6. Select **Text File (*.txt)** in the **Save as type:** field.
7. Click **Save**.

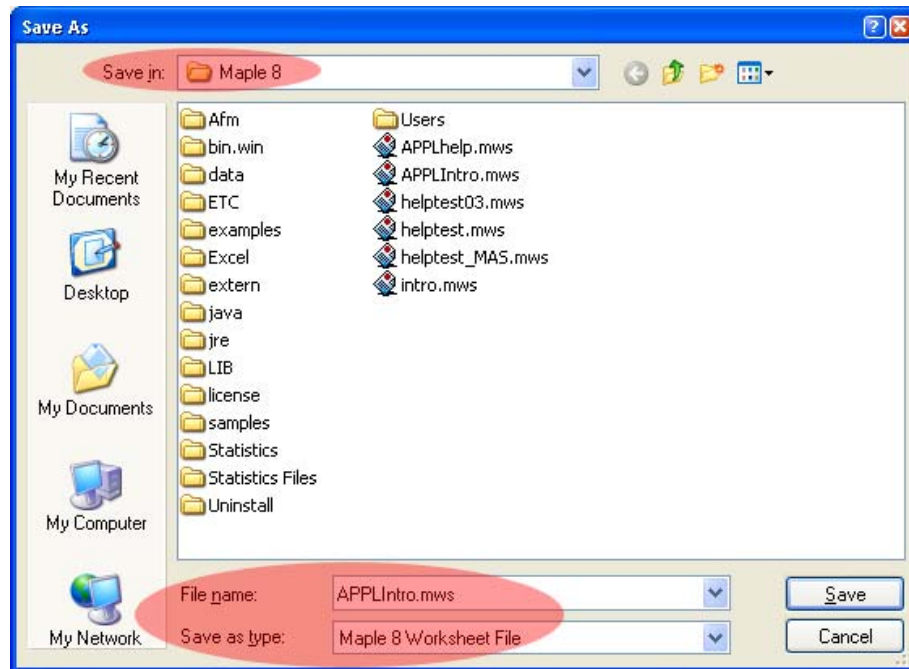
Downloading APPLhelp.mws



Use this figure for steps 8-11

8. Right-click **APPLhelp.mws**.
9. Select **Save Target As...**
10. Browse to **C:\Program Files\Maple X**, where **X** is the version number of Maple you are using.
11. Click **Save**.

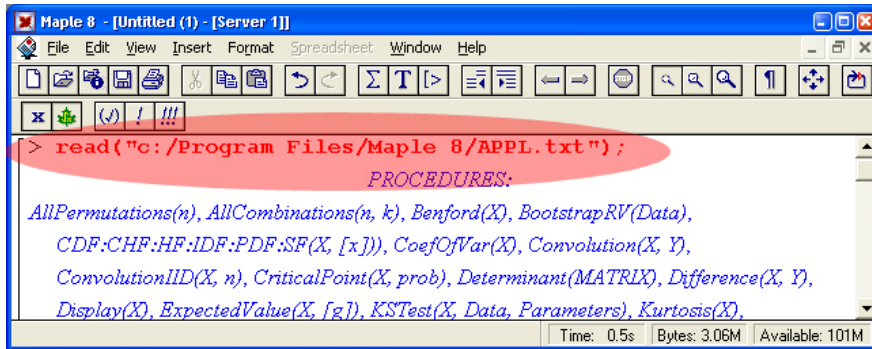
Downloading APPLIntro.mws



Use this figure for steps 12-15

12. Right-click **APPLIntro.mws**.
13. Select **Save Target As...**
14. Browse to **C:\Program Files\Maple X**, where **X** is the version number of Maple you are using.
15. Click **Save**.

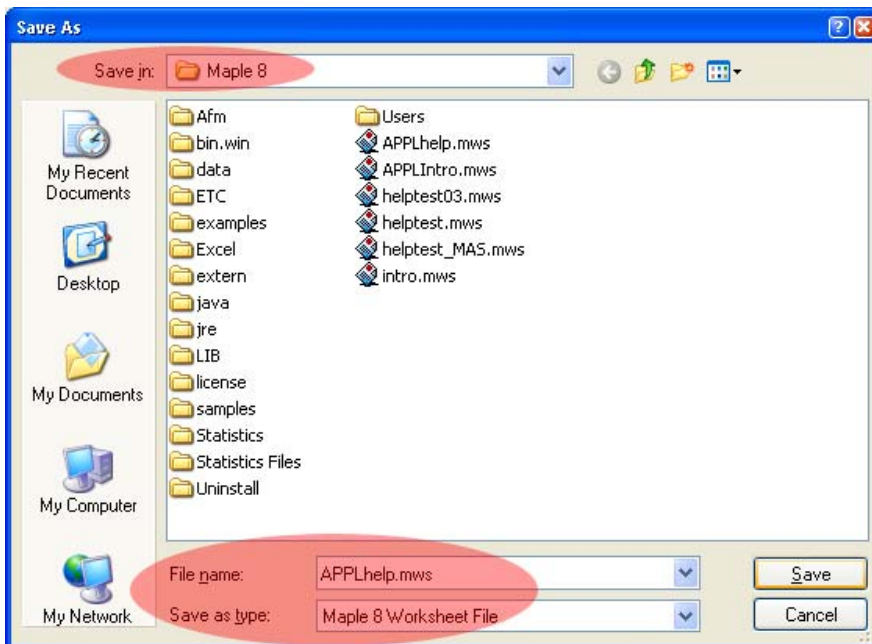
Loading the APPL.txt file for use in Maple



Use this figure for steps 16-19

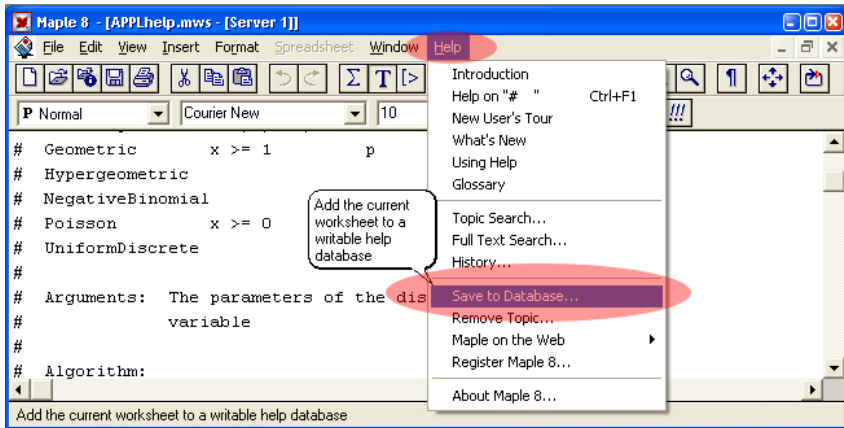
16. Open **Maple X**, where **X** is the version number of Maple you are using.
17. **Maximize** the window.
18. Create a **new** Maple worksheet.
19. Type `read("c:/Program Files/Maple X/APPL.txt");` on the first line and hit enter.

Installing the APPLhelp.mws help file.



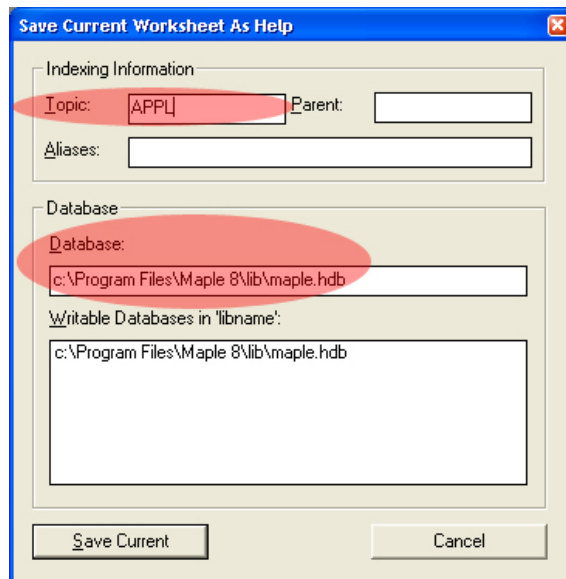
Use this figure for steps 20-25

20. Click **File->Open** (from Maple's main menu bar).
21. Browse to **C:\Program Files\Maple X**, where **X** is the version number of Maple you are using.
22. Select **Maple Worksheet** from the **files of type:** drop-down menu.
23. Click **APPLhelp.mws**.
24. Click **OK** to open the help text file.
25. If prompted, select **Maple Text** under **Text Format** and click **OK**; otherwise continue with the next step.



Use this figure for steps 26

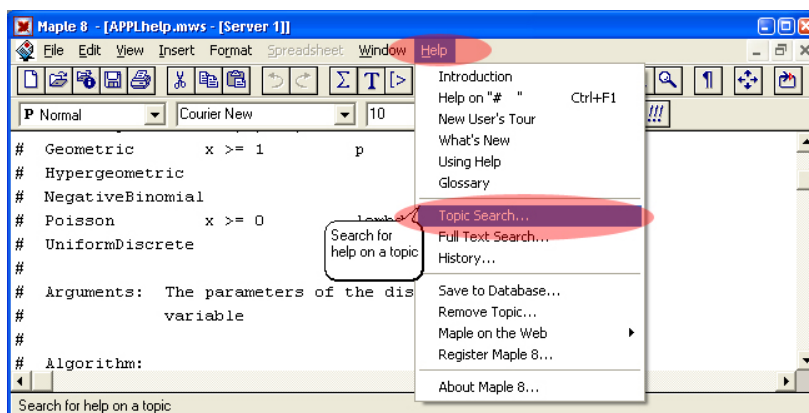
26. Click **Help->Save to database** (from Maple's main menu bar).



Use this figure for steps 27-29

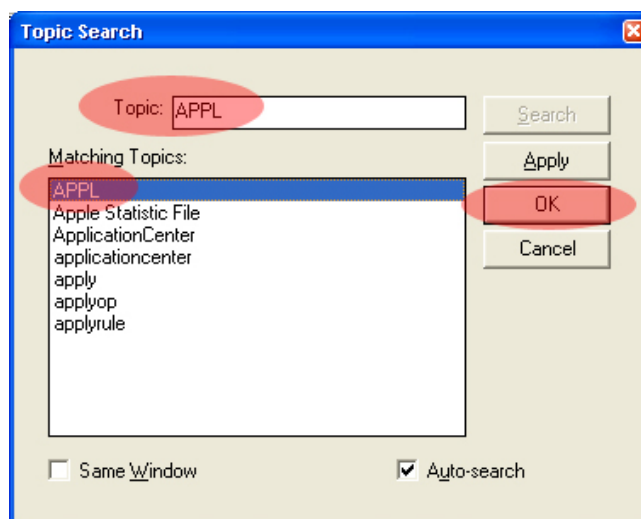
27. Type **APPL** in the **Topic:** field.
28. In the **Database:** field, type **C:\Program Files\Maple X\lib\maple.hdb**, if it is not already listed, where **X** is the version number of Maple you are using.
29. Click **Save Current**.

Checking the installation of the APPLhelp.mws help file.



Use this figure for step 30

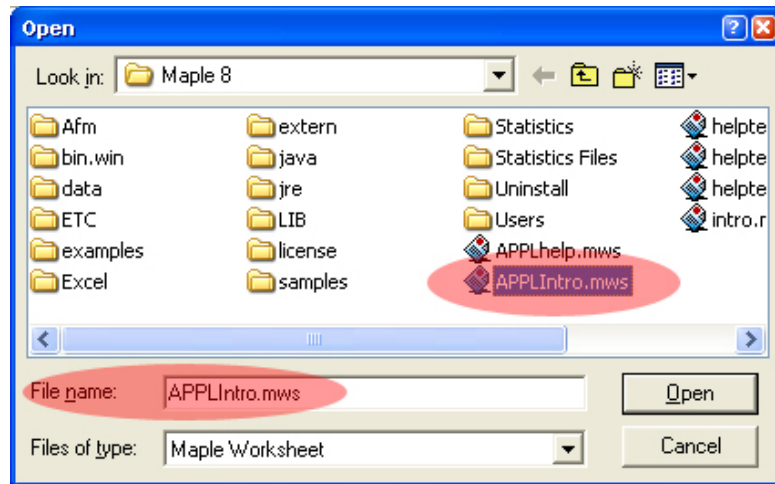
30. Click **Help->Topic Search...**



Use this figure for steps 31-33

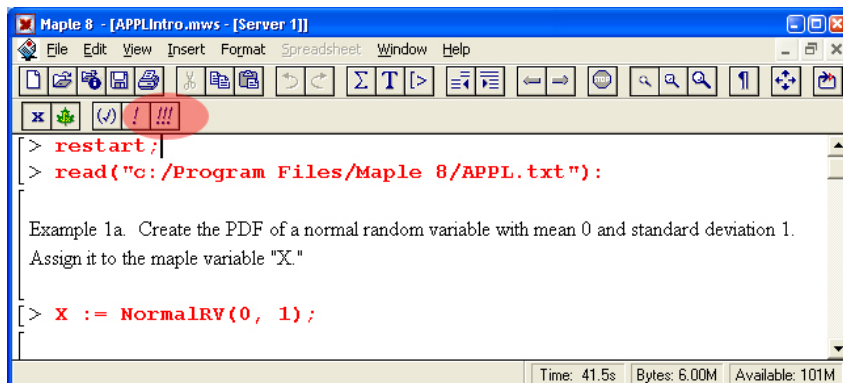
31. Type **APPL** in the **Topic:** field.
32. Select **APPL** in the **Matching Topics** field.
33. Click **OK** to open the APPL help file.

Testing using the APPLIntro.mws worksheet file.



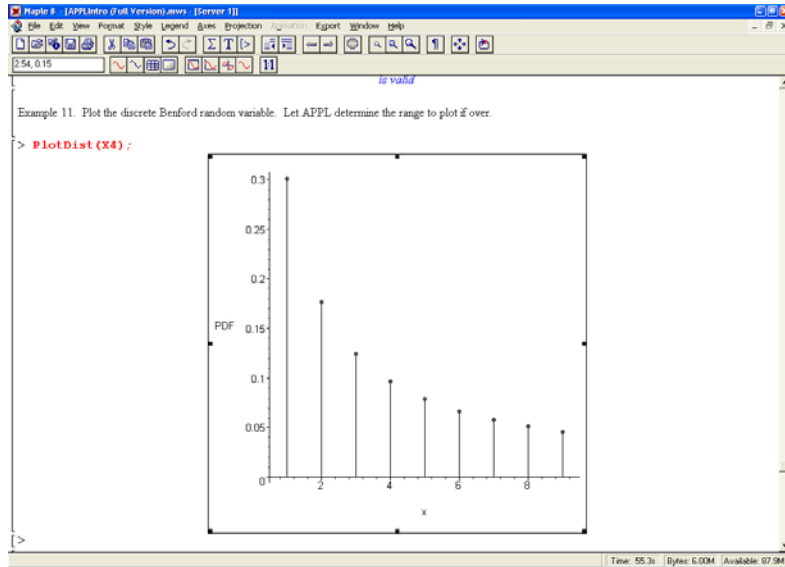
Use this figure for steps 34-37

34. Click **File->Open...** (from Maple's main menu bar).
35. Browse to **C:\Program Files\Maple X**, where **X** is the version number of Maple you are using.
36. Click **APPLIntro.mws**.
37. Click **Open** to open the example worksheet for APPL.



Use this figure for step 38-39

38. Scroll to the top of the worksheet. On the second line (the read line), change "**8**" to the version number of Maple you are currently using.
39. To test the installation, click the **Execute All** button in the Maple toolbar, or from the **Edit** menu, choose **Execute**, and then **Worksheet**.



Use this figure for step 40

40. Compare your final graph to the one above; if they are the same, you have installed the software correctly.

If you have any questions or comments, send an email to Dr. Evans at evans@rose-hulman.edu or visit her web site at <http://www.rose-hulman.edu/~evans/>

Documentation of APPL Software Installation by:
 Keenan Davis, Ron Dempsey, Tyler Gremore and Tim Poplin