

Table1. Binary Logistic Model/Multi Level Model of Liberal Democrat voting in 2005

Predictor Variables	Model A Estimates			ML Model B Estimates	
	(β)	SE	Odds	(β)	SE
Age (comparator = 18-25)					
Age 25-44	0.94**	(0.42)	2.53	1.06***	(0.34)
Age 45-64	1.38***	(0.42)	3.96	1.40***	(0.35)
Age 65 and over	1.30***	(0.44)	3.66	1.48***	(0.36)
Age Finished Education (vs 15 >)					
Seventeen	-	-	-	0.46**	(0.22)
Nineteen	-	-	-	0.42**	(0.19)
Region (vs Greater London)					
North	-0.72***	(0.29)	0.49	-	-
Scotland	-0.57**	(0.28)	0.57	-	-
Prior Intention to vote Lib Dem	1.62***	(0.35)	5.02	1.42***	(0.23)
Labour best on most important issue	-0.44**	(0.20)	0.63	-0.34**	(0.16)
Conservatives best on most important issue	-0.71***	(0.29)	0.48	-0.89***	(0.21)
Lib Dems best on most important issue	0.83***	(0.25)	2.22	0.83***	(0.18)
Labour party identification	-0.84***	(0.23)	0.43	-0.73***	(0.18)
Conservative party identification	-1.44***	(0.31)	0.24	-1.20***	(0.22)
Lib Dem party identification	1.58***	(0.16)	4.87	1.44***	(0.17)
Other party identification	-	-	-	-1.04***	(0.25)
Labour mobilisation index	-0.40***	(0.16)	0.67	-0.25***	(0.12)
Lib Dem mobilisation index	0.70***	(0.17)	2.01	0.52***	(0.12)
Feelings for Tony Blair	-0.12***	(0.03)	0.88	-0.13***	(0.03)
Feelings for Michael Howard	-0.08**	(0.04)	0.92	-0.09***	(0.03)
Feelings for Charles Kennedy	0.32***	(0.04)	1.38	0.35***	(0.04)
Full Time Students 2001 Census	-	-	-	0.04***	(0.02)
Labour Spending 2005	-	-	-	-0.01***	(0.00)
Liberal Democrat Spending 2005	-	-	-	0.01***	(0.00)
Constant	-3.66***	(0.60)	0.03	-3.94***	(0.54)
Pseudo R²		0.40			-
Log Likelihood		-1082.74			-
Per Cent correctly classified		89			-
Between Constituency Variation				0.088	(0.059)

Significance: *** p< 0.01; ** p<0.05; Source: 2005 BES Pre-Post election survey

Weighted: Post election weight for GB for Binary Logistic model. Model A – Estimates calculated using STATA; Model B – Multilevel model: estimates calculated using MLWIN (PQL estimation procedure). We also ran an MCMC model – but estimates hardly differed from ML PQL estimations.

Model A and Model B: Insignificant variables at the individual level: Gender; Socio-economic class - all (comparator = salariat); Belong to a social class – working, none (comparator = middle); Religion – all (comparator = No religion); Tenure – all (comparator = own outright); Age finished education – 16, 18, still in education; Region (comparator = Greater London); Party best on most important issue – Other parties (comparator = no party); Labour party best at managing the economy; Party ID (comparator = no party); Conservative mobilisation index; Economic voting – Retrospective evaluations national economy, Retrospective evaluations personal conditions, Prospective evaluations national economy, Prospective evaluations personal economic conditions.

Model B: Insignificant constituency level (area level) variables: Factor score 1 (Social Class); Factor score 2 (Affluence/Deprivation); Factor 3 (Retirement and Rural); % Muslims in the constituency; Labour spending 2005; Conservative Spending 2005; Liberal Democrat seats won on the council 2002-05; Liberal Democrat majority on the Council.

Table 2: The Health of the Local Party in 2007: Liberal Democrat Composition of Different Councils and Number of Councillors in England, Scotland and Wales

Local Councils	Councillors		Council Control	
	Number	% Total	Number	% Total
<i>English</i>	4096	21%	29	8%
London Borough	319	17%	3	9%
Metropolitan Borough	575	24%	4	11%
Unitary Authorities	501	21%	1	2%
County Council	473	21%	3	9%
Shire Districts	2228	21%	18	8%
<i>Welsh</i>				
Unitary Authorities	144	11%	0	-
<i>Scottish</i>				
Unitary Authorities	166	16%	0	-
Total	4406	20%	29	7%

Source: Houses of Parliament Records, 2007

Figure 1: Vote Intention Since 2005 General Election : Source ukpollingreport.co.uk

Figure 1: Vote Intention Since 2005 GE: Source ukpollingreport.co.uk

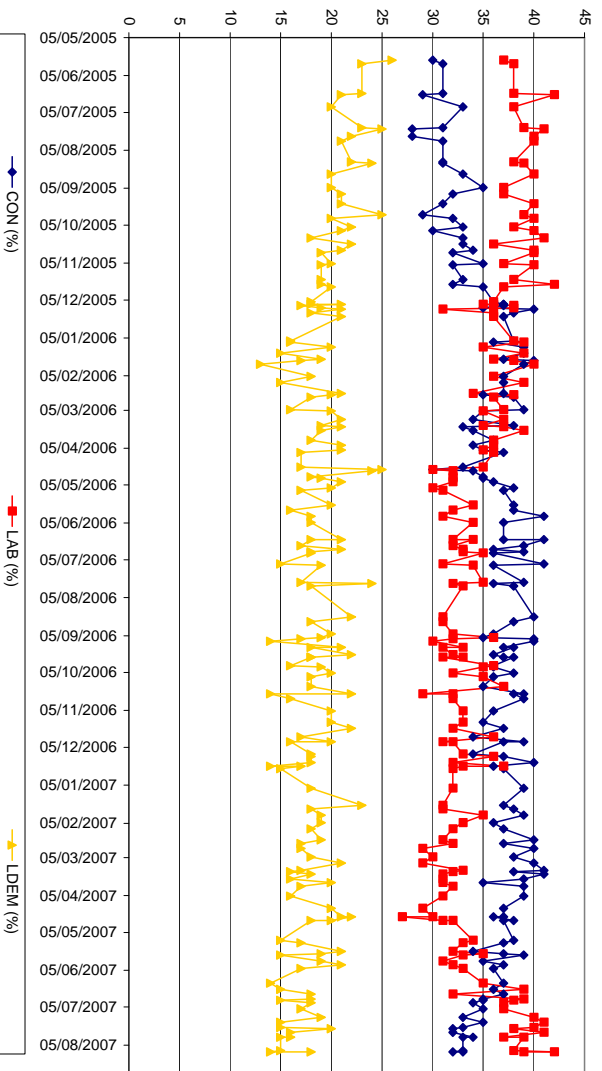


Figure 2: LibDem Reported Vote Intention 1993: Source: ipsos-mori.com

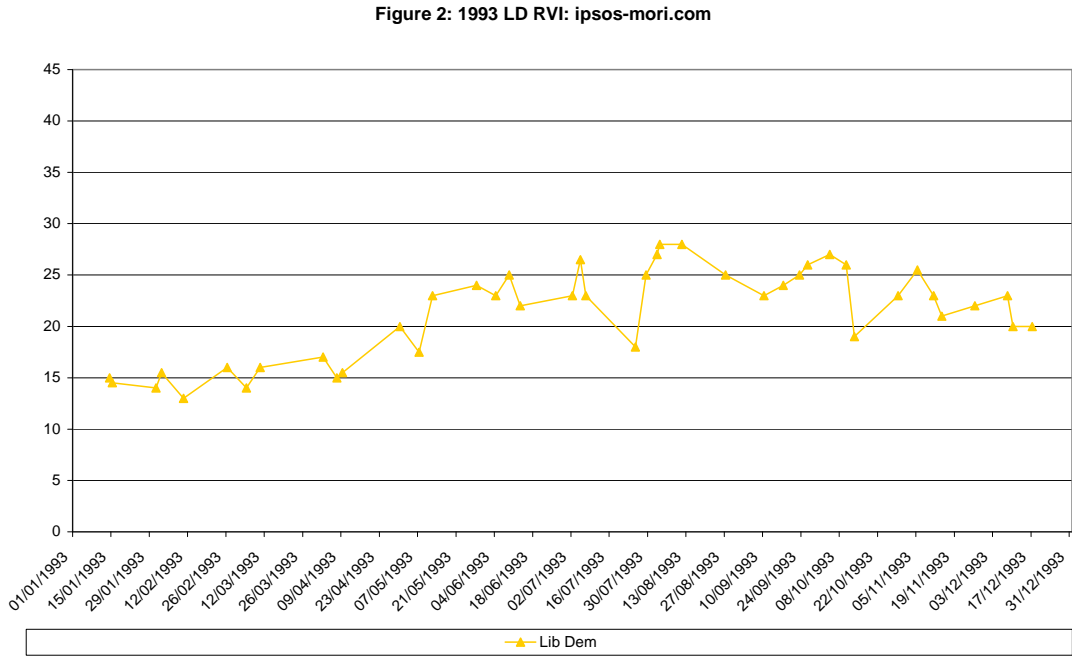


Figure 3: LibDem Reported Vote Intention 1998 Source: ipsos-mori.com

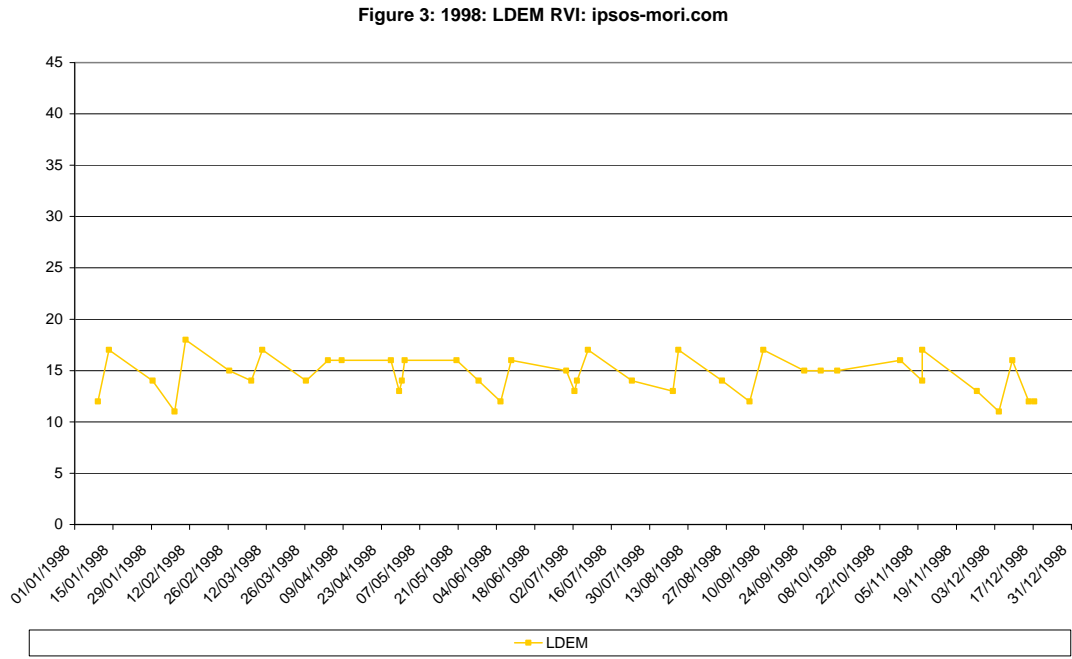


Figure 4: LibDem Reported Vote Intention 2002: source: ipsos-mori.com

