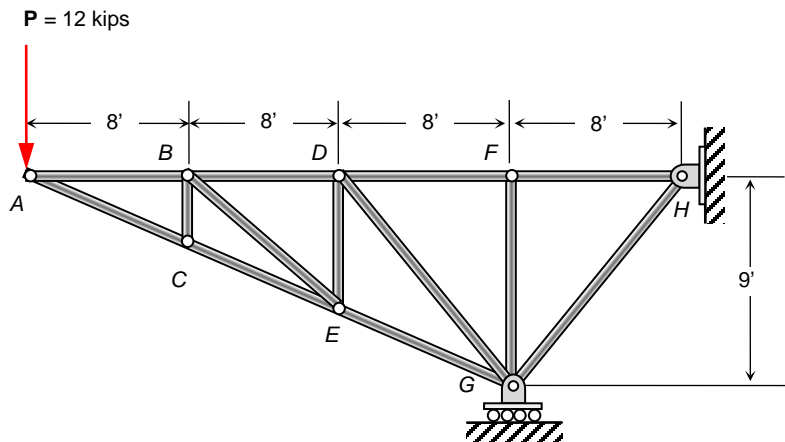


Example

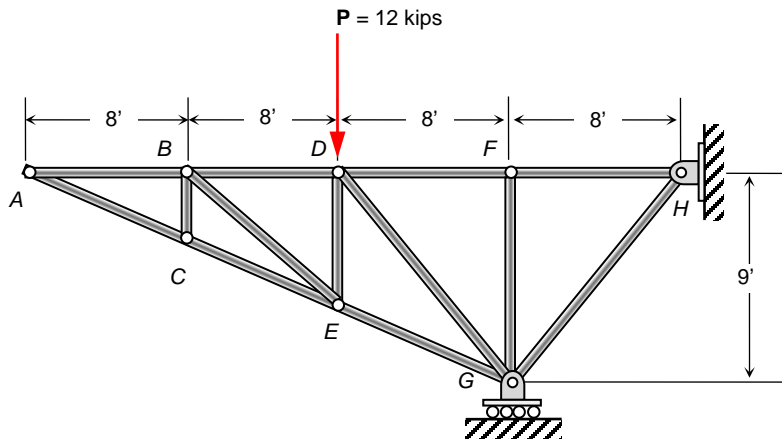
Consider the structure made up of thirteen weightless members that are connected to each other via smooth pins.

- How many two-force members are in the structure?
- Find the reactions at the pin H and the roller G .
- Find the internal force in each two-force member you identified in part (a). (Hint: Draw an FBD for each individual *pin* that connects two-force members. Start at a location where there are only two unknowns, such as point A .)



Example

Find the force in each member of the truss shown below and state whether it is in tension or compression.



Example

Find the force in each member of the truss shown below and state whether it is in tension or compression.

