



US006057665A

**United States Patent** [19]  
**Herniter et al.**

[11] **Patent Number:** **6,057,665**  
[45] **Date of Patent:** **May 2, 2000**

- [54] **BATTERY CHARGER WITH MAXIMUM POWER TRACKING**
- [75] Inventors: **Marc E. Herniter; William J. Schlanger**, both of Flagstaff, Ariz.
- [73] Assignee: **Fire Wind & Rain Technologies LLC**, Flagstaff, Ariz.
- [21] Appl. No.: **09/156,228**
- [22] Filed: **Sep. 18, 1998**
- [51] **Int. Cl.<sup>7</sup>** ..... **H01M 10/46**
- [52] **U.S. Cl.** ..... **320/101; 323/906**
- [58] **Field of Search** ..... 320/101, 123, 320/137, 139, 140, 143, 163, DIG. 28, DIG. 29; 136/242, 290, 291, 293; 323/299, 303, 906

5,077,652	12/1991	Faley	363/97
5,105,352	4/1992	Iwasa et al.	363/98
5,120,986	6/1992	Shekhawat	307/261
5,166,870	11/1992	Shimuzu et al.	363/41
5,229,929	7/1993	Shimuzu et al.	363/98
5,270,636	12/1993	Lafferty	320/61
5,309,345	5/1994	Nakamura et al.	363/41
5,327,071	7/1994	Frederick et al.	323/299
5,381,328	1/1995	Umezama et al.	363/41
5,400,237	3/1995	Flanagan et al.	363/41
5,442,538	8/1995	Ikeda et al.	363/95
5,563,776	10/1996	Eck	363/26
5,654,883	8/1997	Takehara et al.	363/79
5,668,713	9/1997	Eguchi et al.	363/95
5,680,302	10/1997	Iwata et al.	363/132

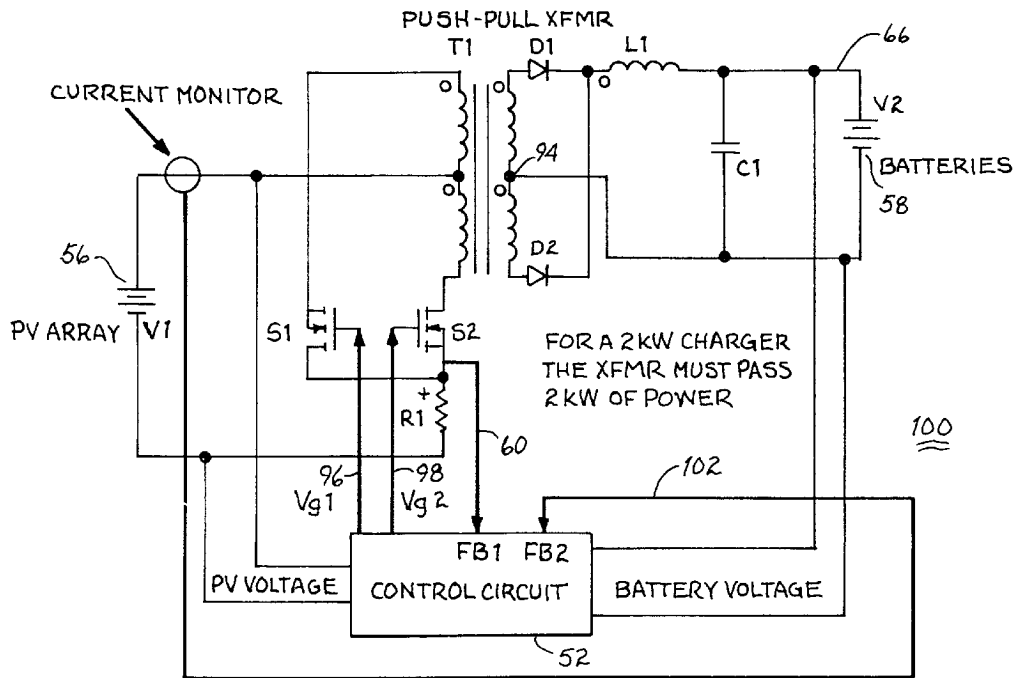
- [56] **References Cited**
- U.S. PATENT DOCUMENTS**
- 3,350,635 10/1967 Mesch ..... 324/29.5
- 3,384,806 5/1968 Hartman ..... 322/2
- 3,696,286 10/1972 Ule ..... 323/15
- 3,825,816 7/1974 Togneri et al. .... 321/18
- 4,200,833 4/1980 Wilkerson ..... 323/20
- 4,375,662 3/1983 Baker ..... 363/95
- 4,390,940 6/1983 Corbefin et al. .... 363/132
- 4,404,472 9/1983 Steigerwald ..... 307/46
- 4,604,567 8/1986 Chetty ..... 323/299
- 4,679,130 7/1987 Moscovici ..... 363/17
- 4,692,855 9/1987 Kuroiwa et al. .... 363/95
- 4,873,480 10/1989 Lafferty ..... 323/229
- 4,924,323 5/1990 Inaba et al. .... 363/95
- 5,027,051 6/1991 Lafferty ..... 323/222

*Primary Examiner*—Edward H. Tso  
*Attorney, Agent, or Firm*—Cabill, Sutton & Thomas P.L.C.

[57] **ABSTRACT**

Apparatus and attendant methodology for extracting maximum power from an energy source, such as a photo voltaic panel, an array of photo voltaic panels, or a windmill and delivering that power to a battery or an array of batteries is disclosed. The apparatus determines the maximum operating point of the energy source, and circuits and circuit topologies are presented for extracting the energy. The apparatus eliminates the problem of finding local maximum points, and problems attendant variations of the absolute maximum power point as a function of temperature, insolation, array construction, and photo voltaic panel manufacturing tolerances. The energy source supplies power in the form of a voltage and charges the batteries with a controllable current source.

**31 Claims, 17 Drawing Sheets**



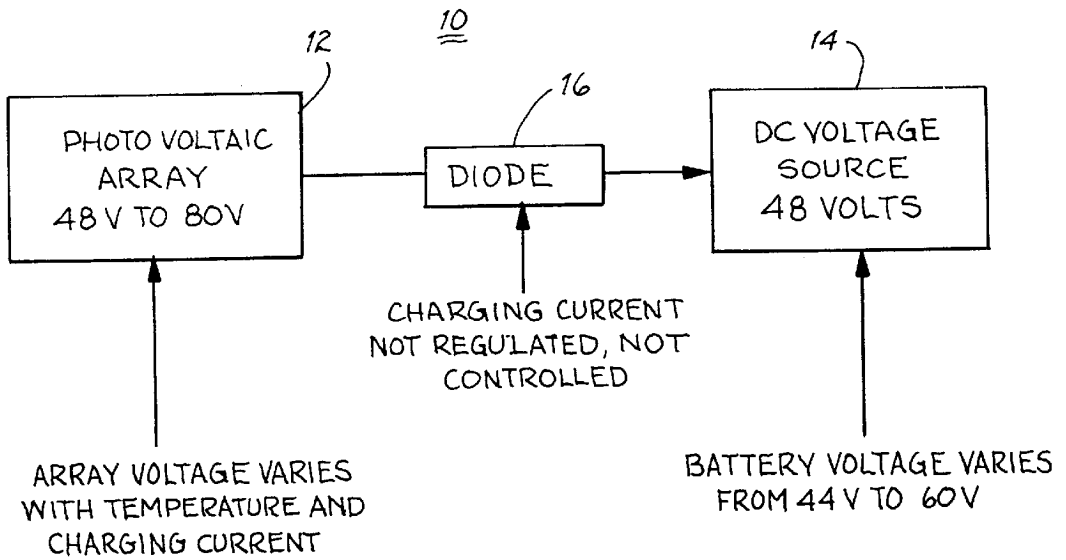


FIG. 1 (PRIOR ART)

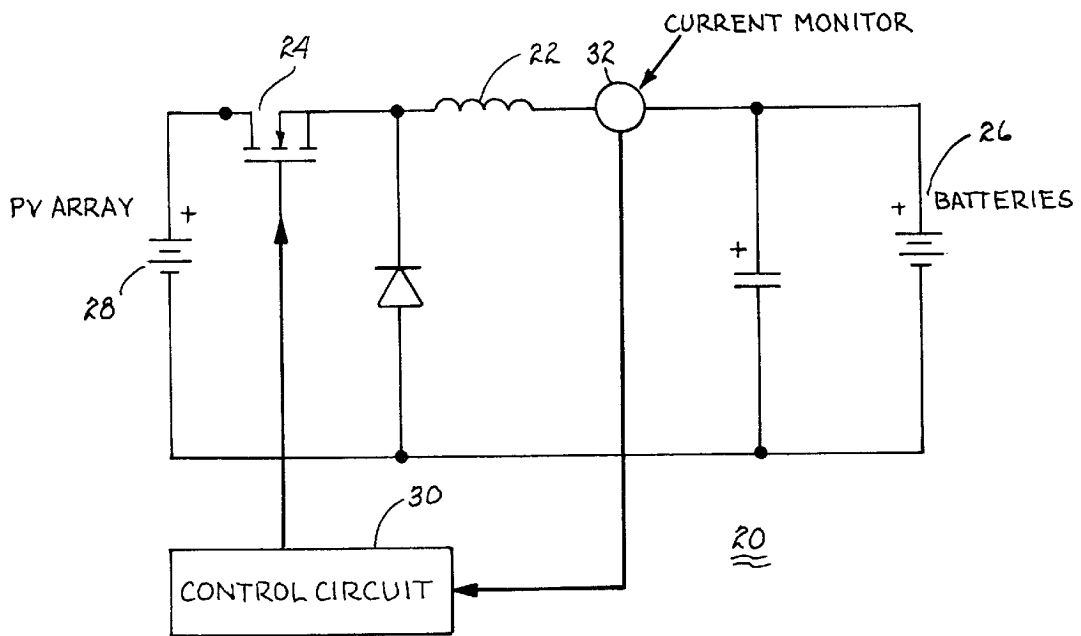


FIG. 2 (PRIOR ART)

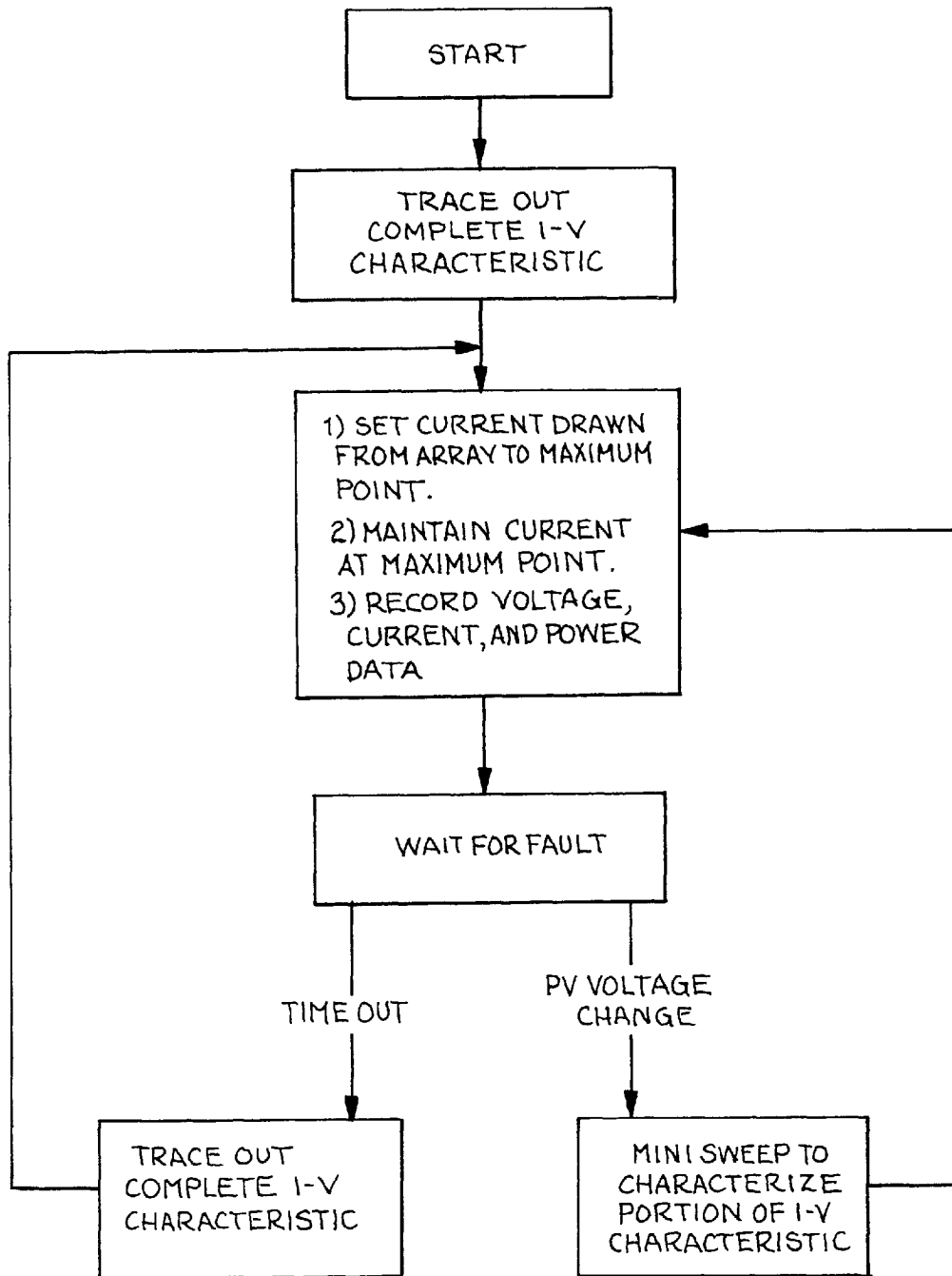


Fig. 3

FLOW CHART OF POWER MAXIMIZATION ALGORITHM

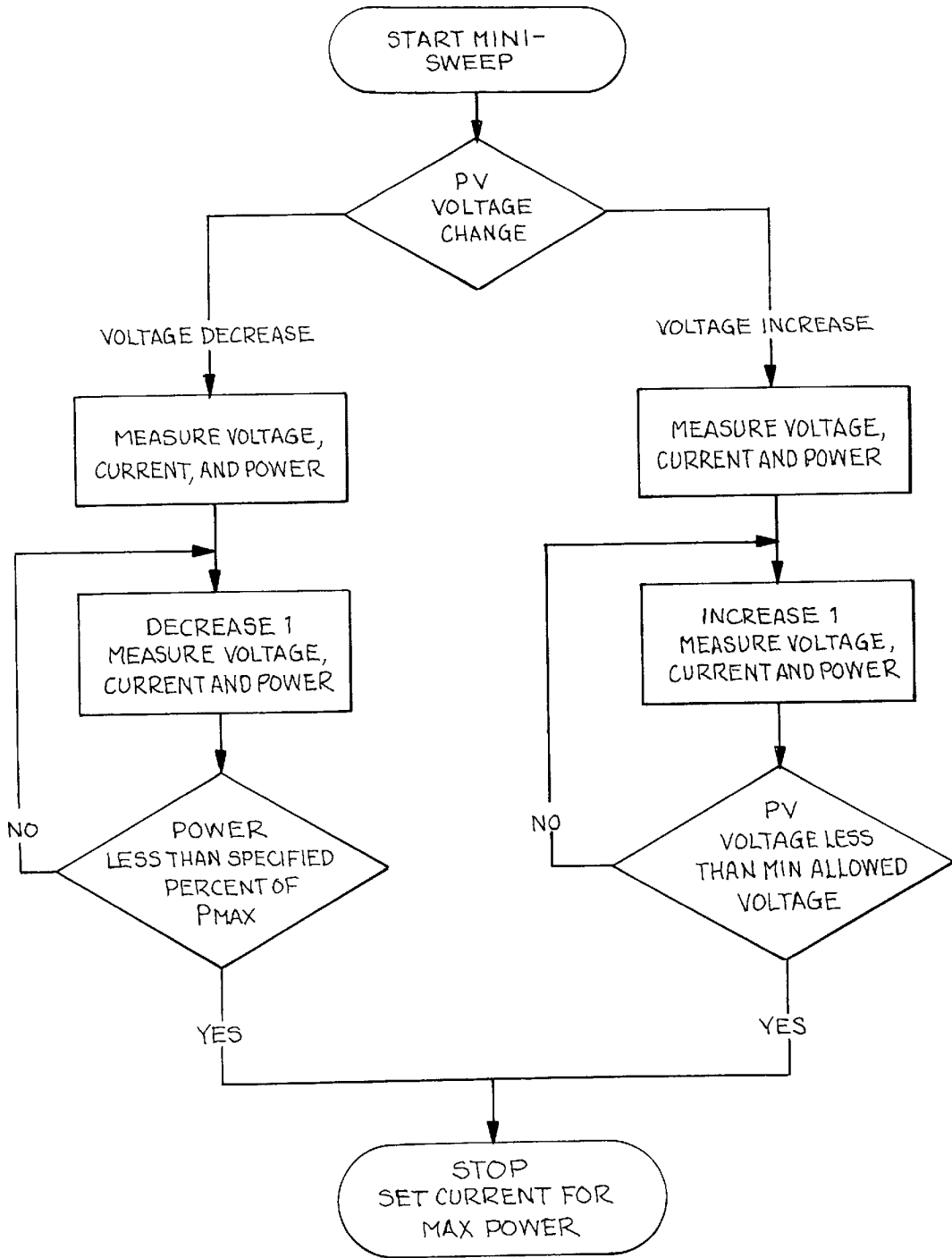
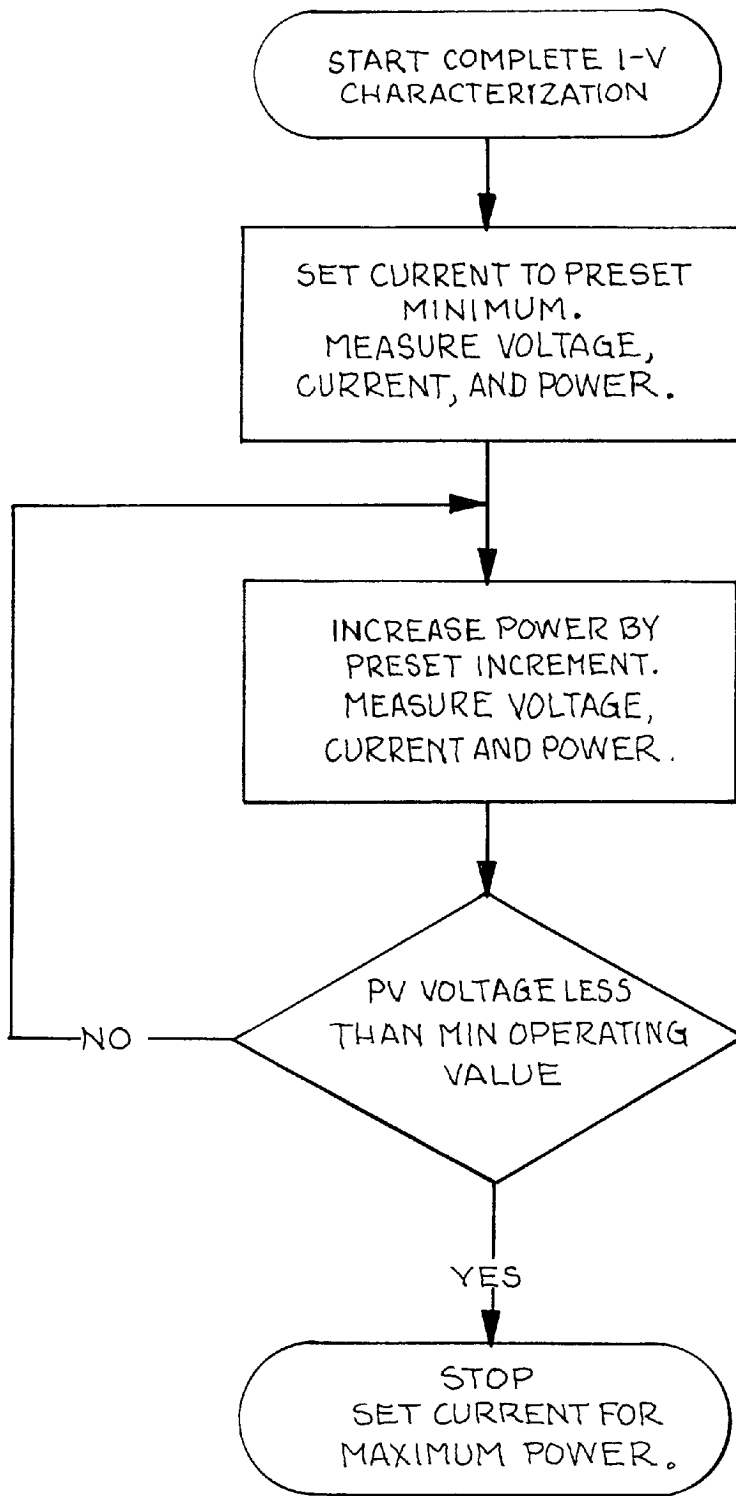


Fig. 4

MINI-SWEEP ALGORITHM



*Fig. 5*

COMPLETE I-V CHARACTERIZATION ALGORITHM

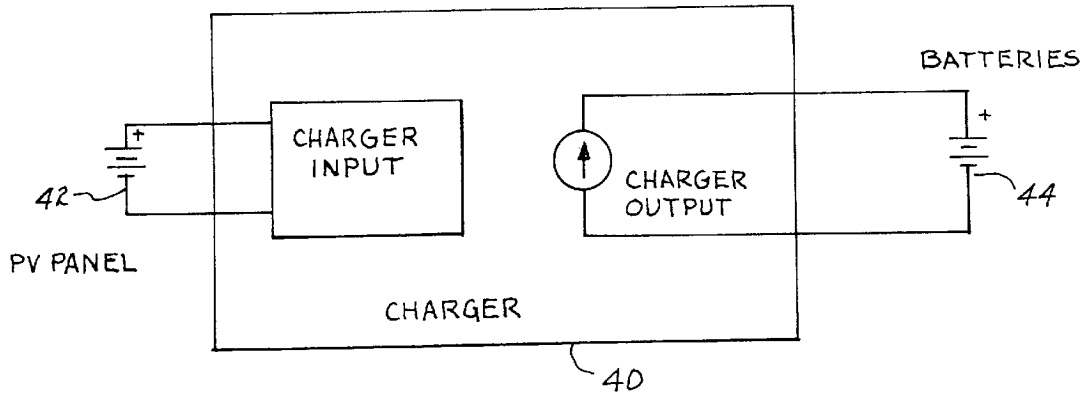


Fig. 6

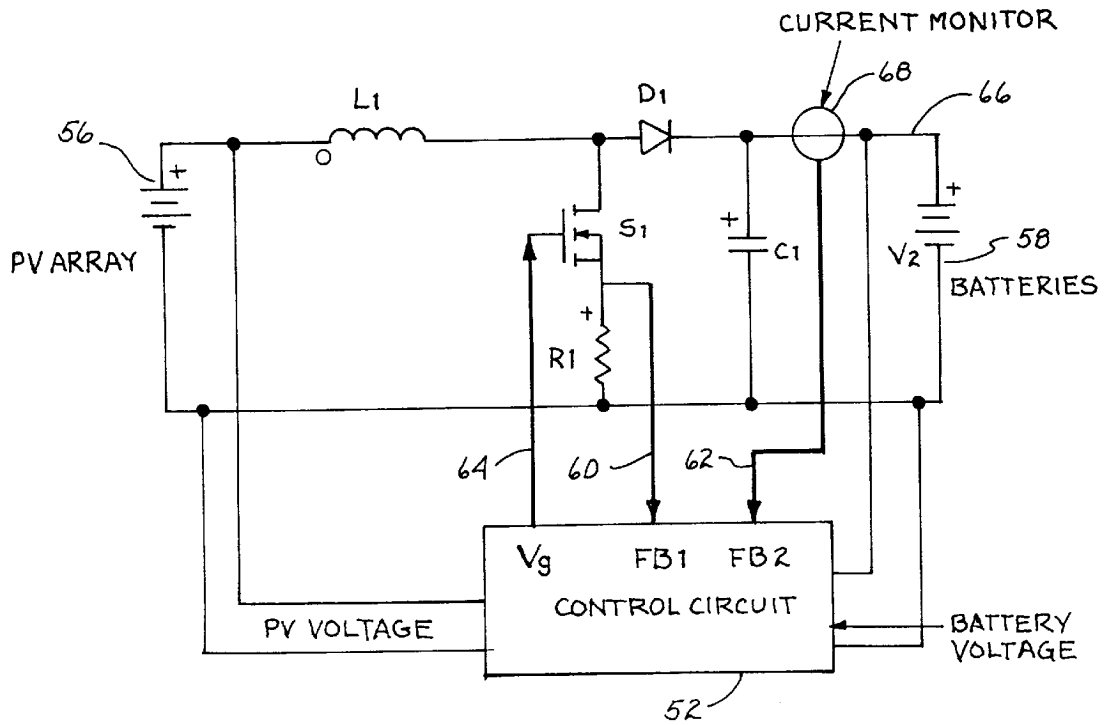


Fig. 7

50

ELECTRICAL CHARACTERISTICS AS A FUNCTION OF IRRADIANCE AND TEMPERATURE

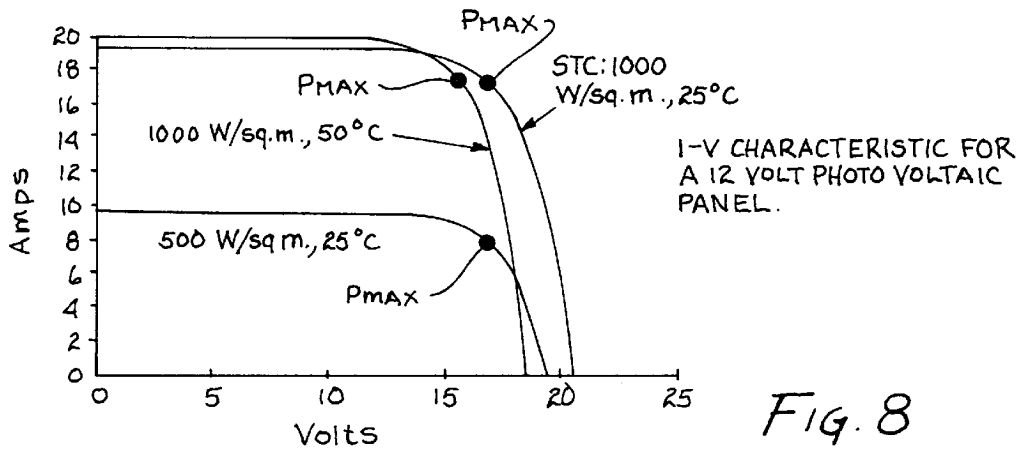
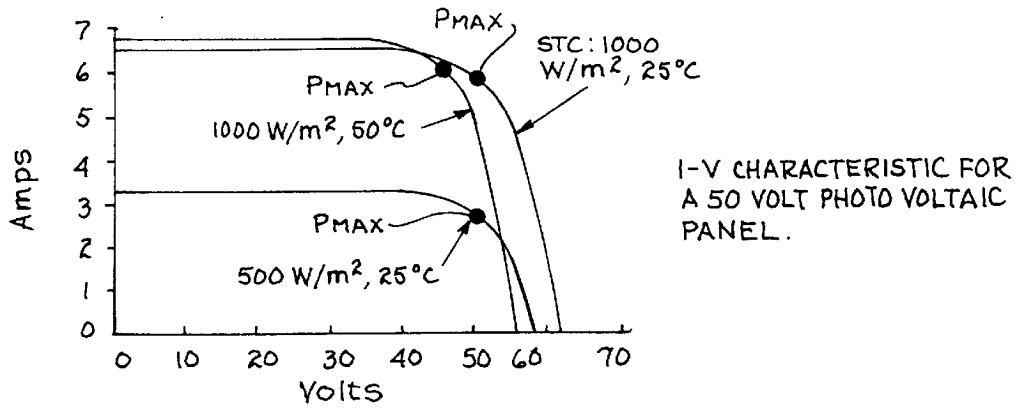


FIG. 8

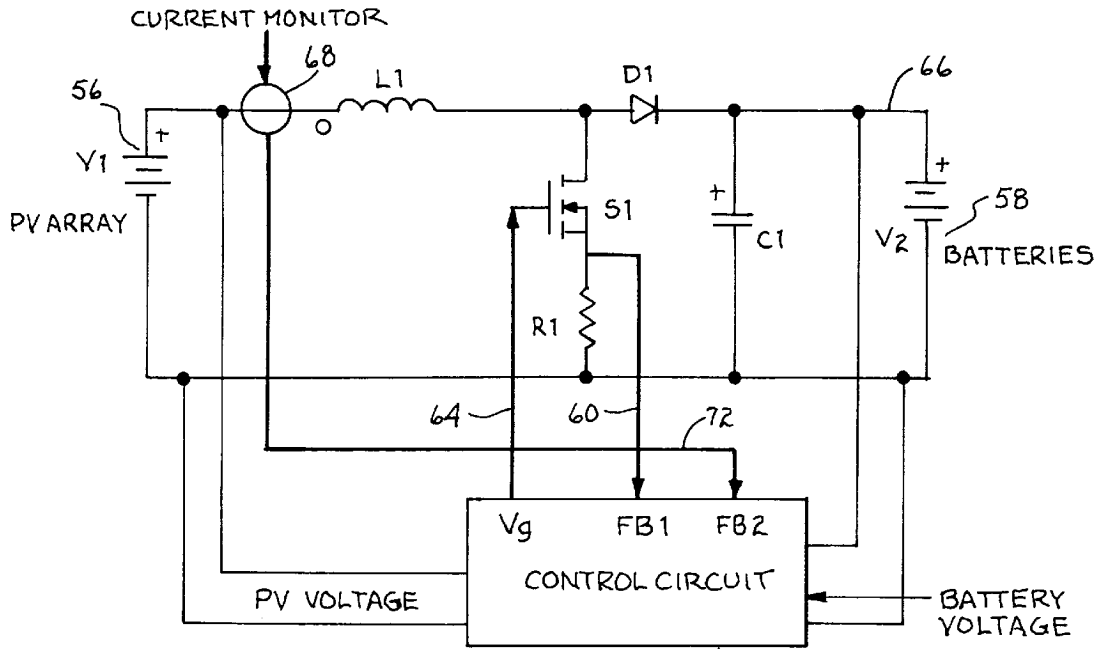


FIG. 9

70

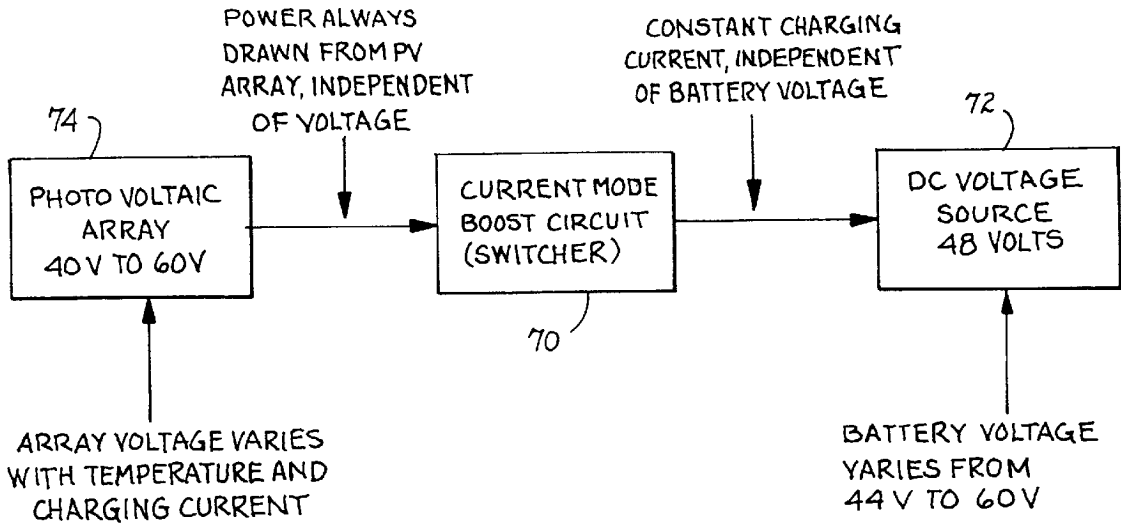


Fig. 10

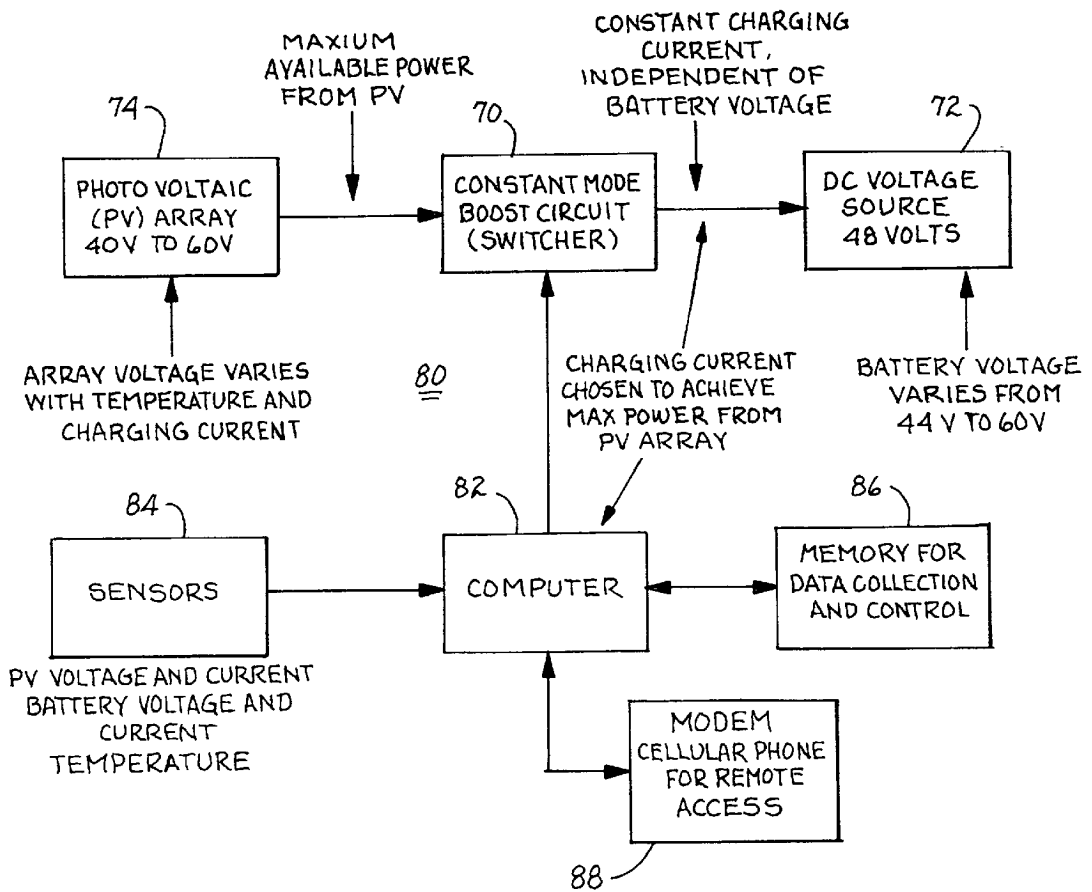
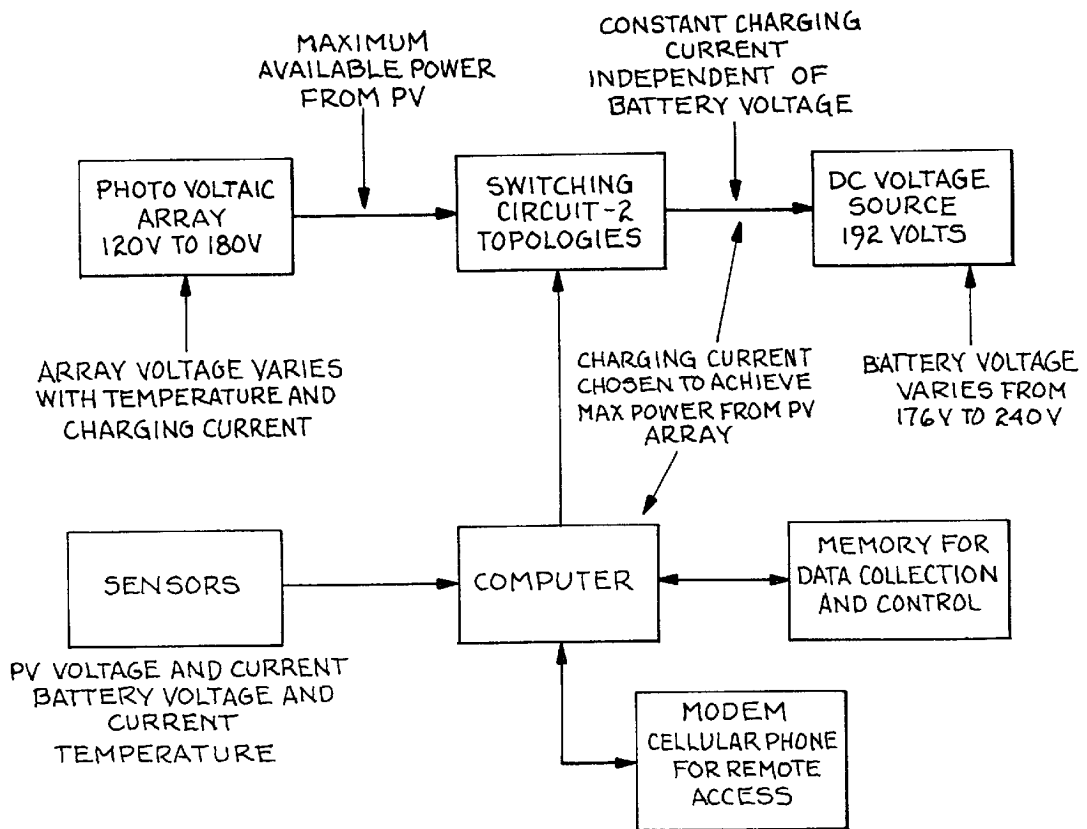
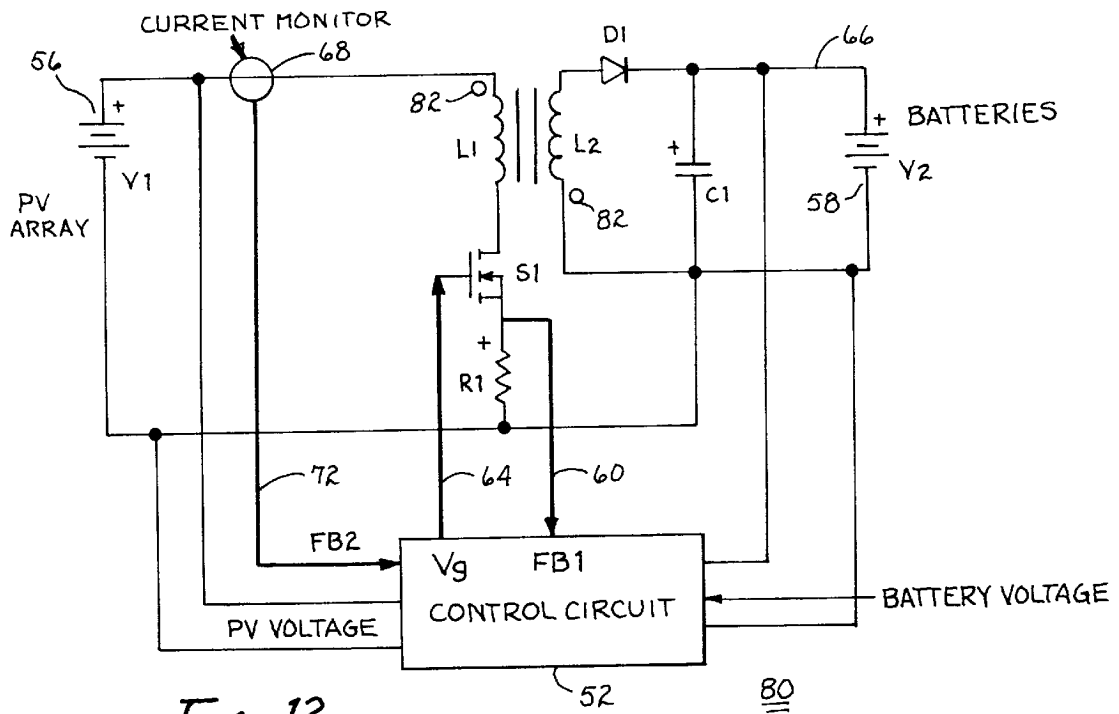


Fig. 11





FOR A 2KW CHARGER  
THE XFMR MUST  
PASS 1 KW OF POWER  
- TRANSFORMER IS 1/2  
THE SIZE OF THE  
PUSH-PULL TOPOLOGY

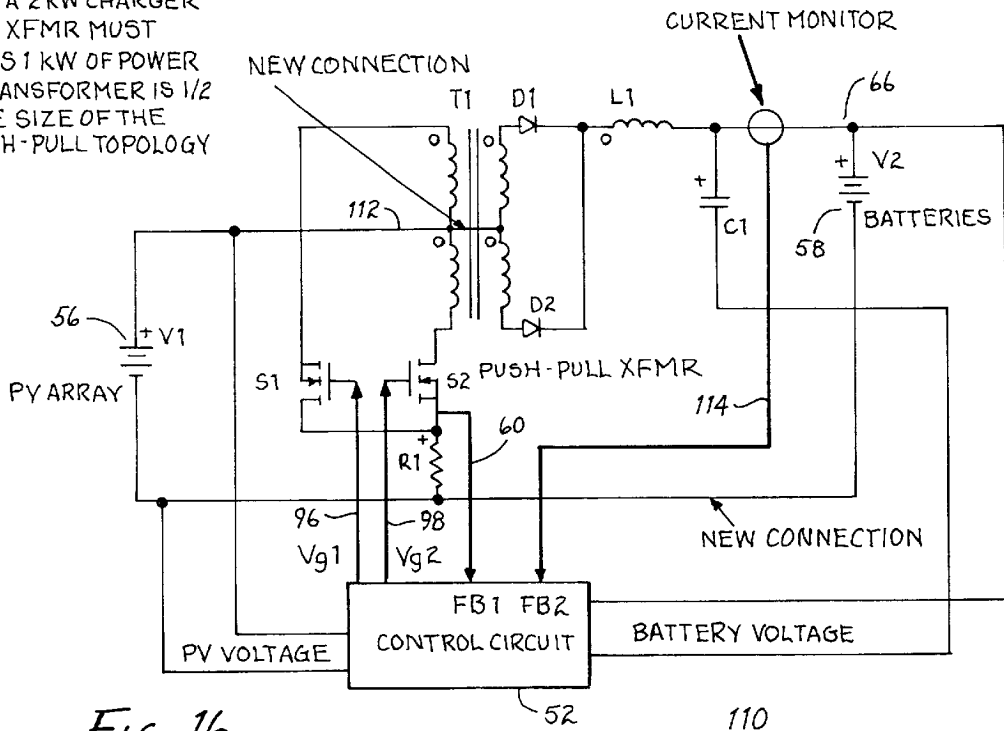


Fig. 16

110

FOR A 2KW CHARGER  
THE XFMR MUST  
PASS 1 KW OF POWER  
- TRANSFORMER IS 1/2  
THE SIZE OF THE  
PUSH-PULL TOPOLOGY

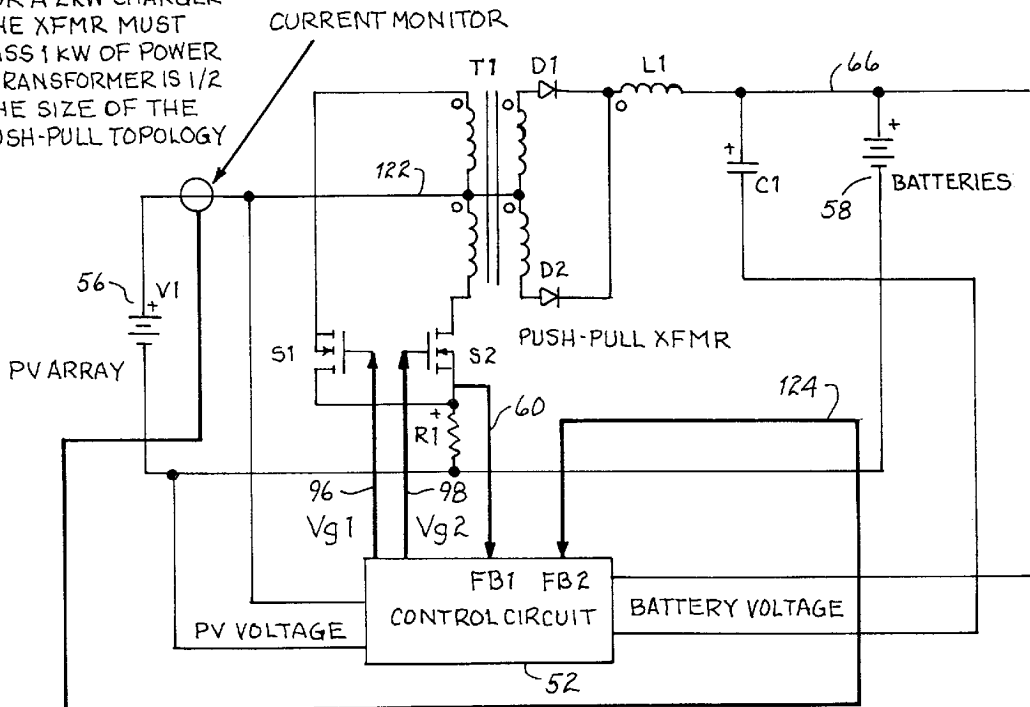


Fig. 17

120

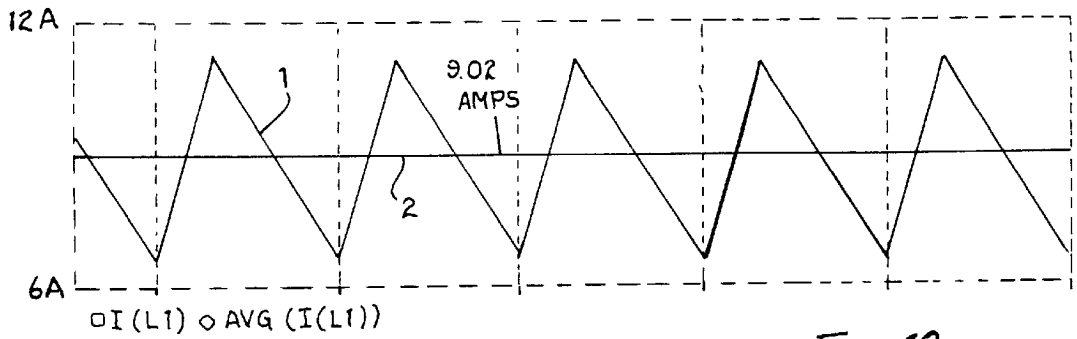


FIG. 18a

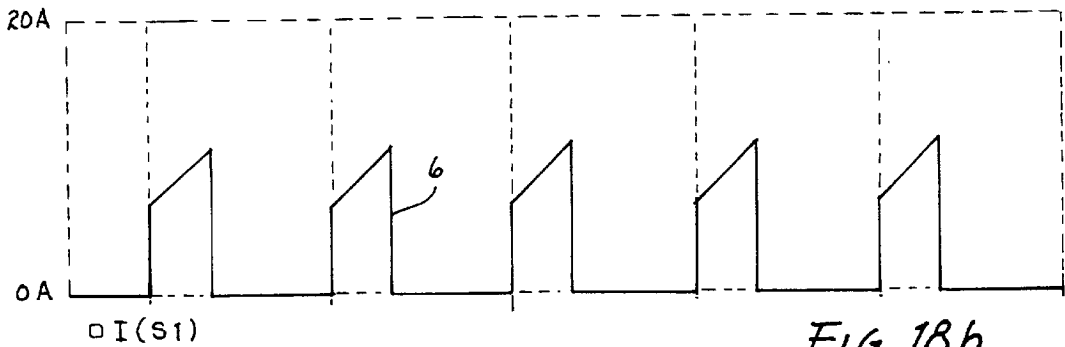


FIG. 18b

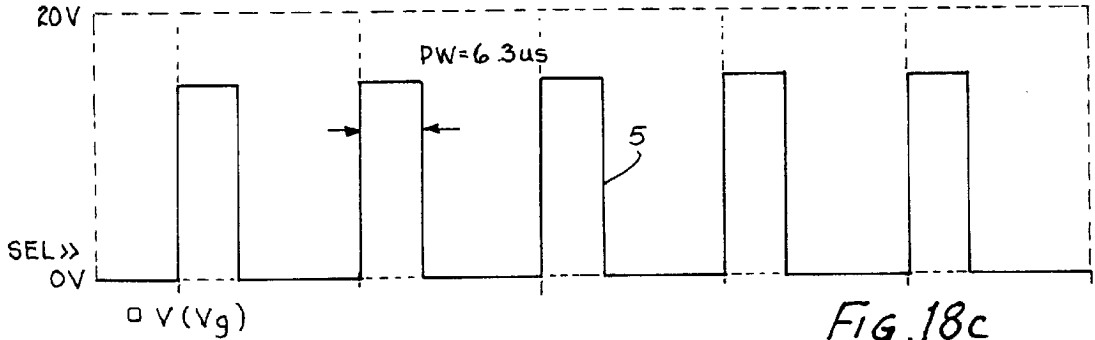


FIG. 18c

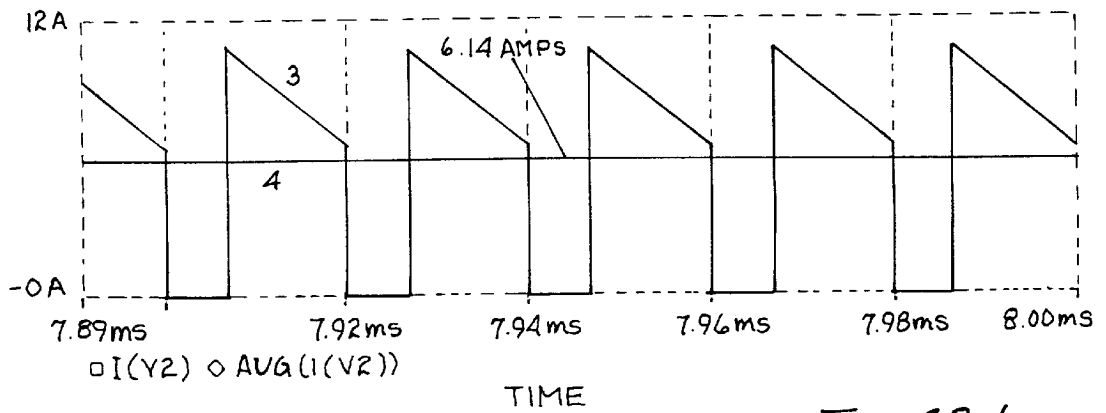


FIG. 18d

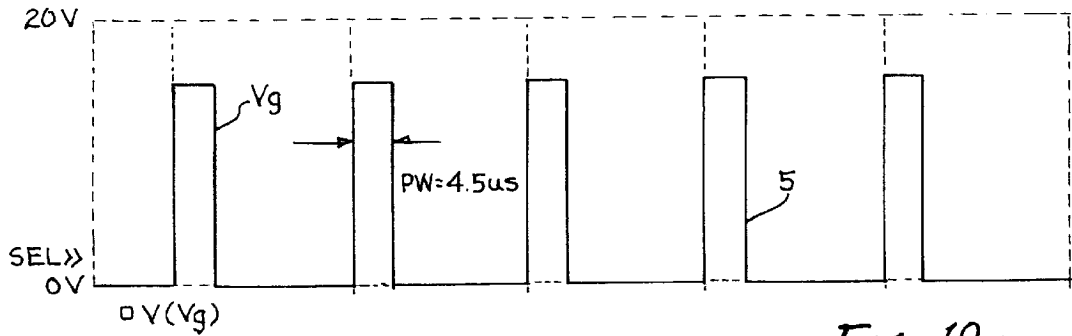


Fig. 19a

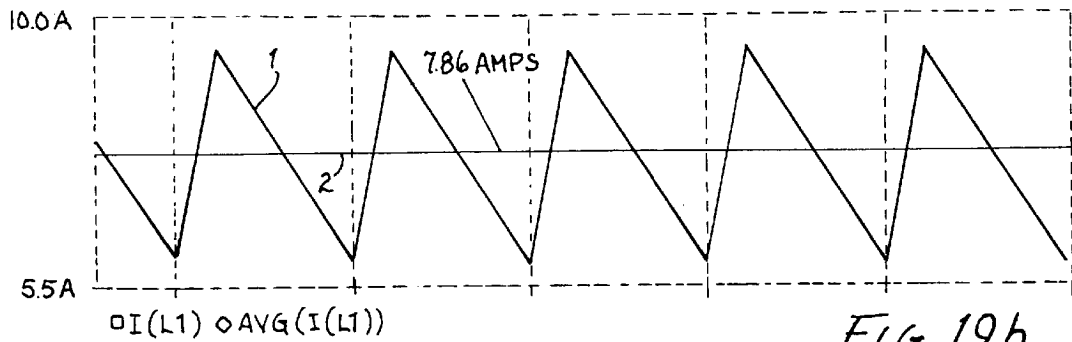


Fig. 19b

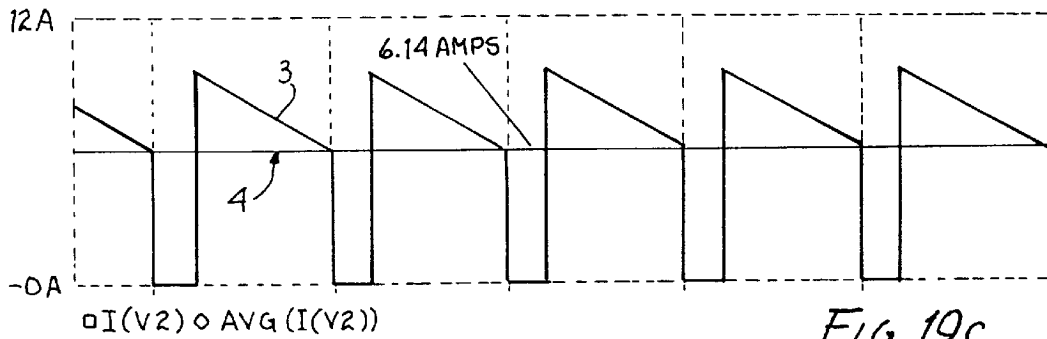


Fig. 19c

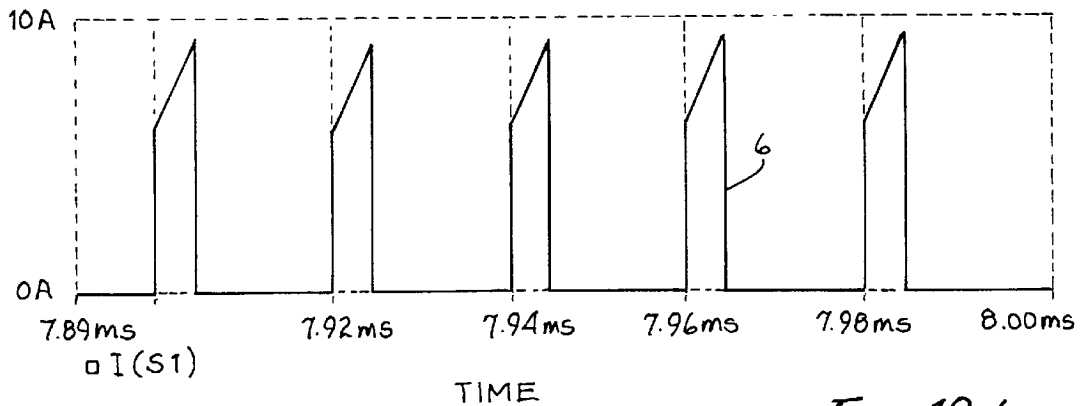


Fig. 19d

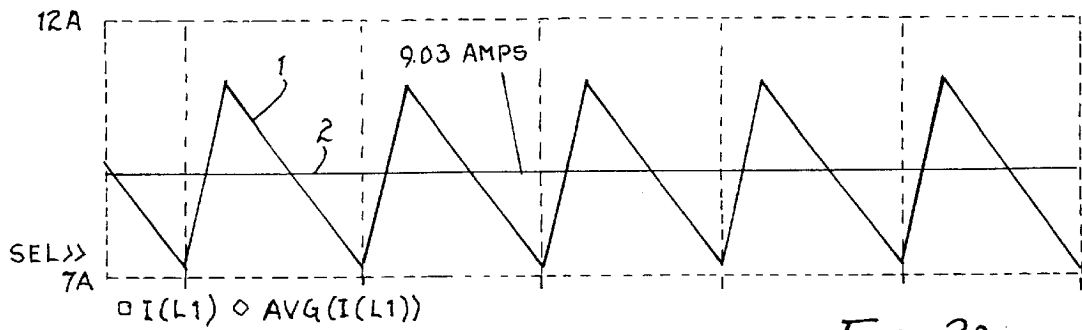


Fig. 20a

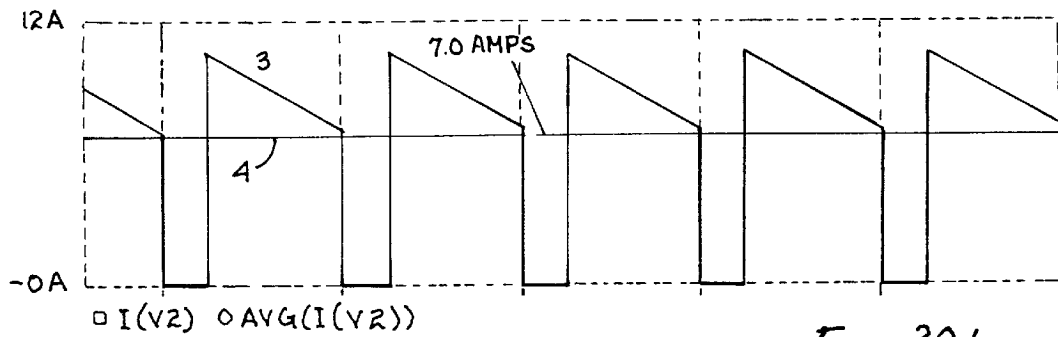


Fig. 20b

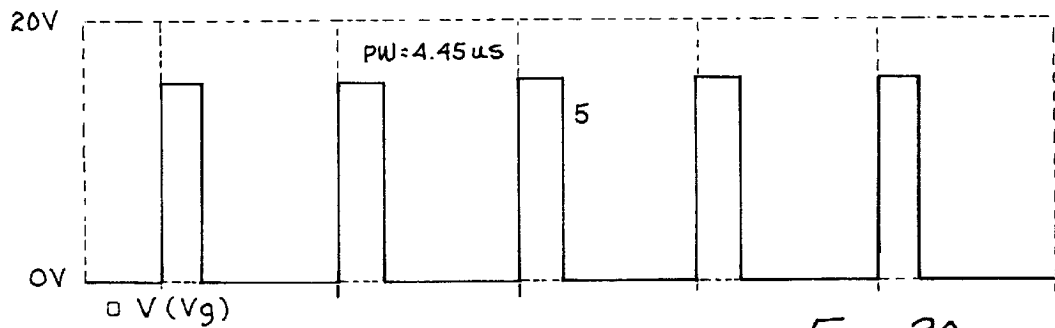


Fig. 20c

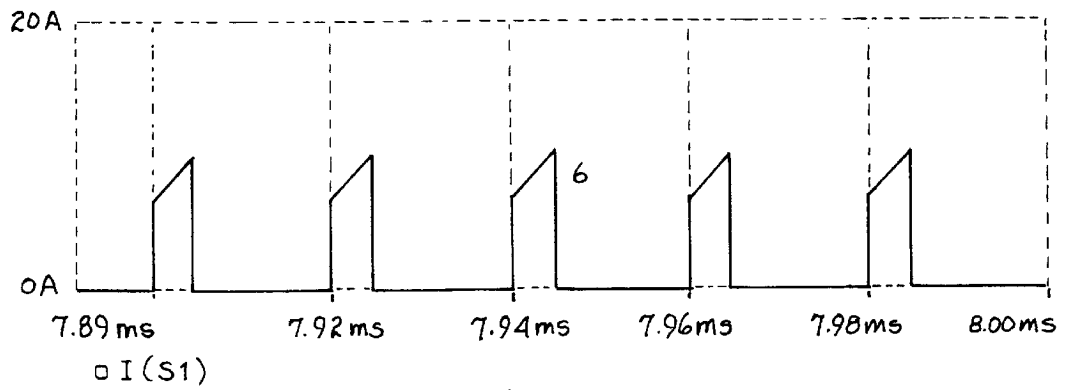


Fig. 20d

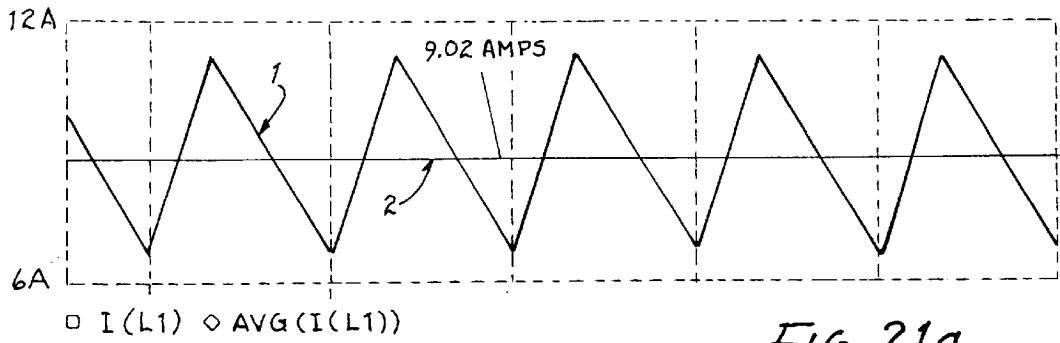


Fig. 21a

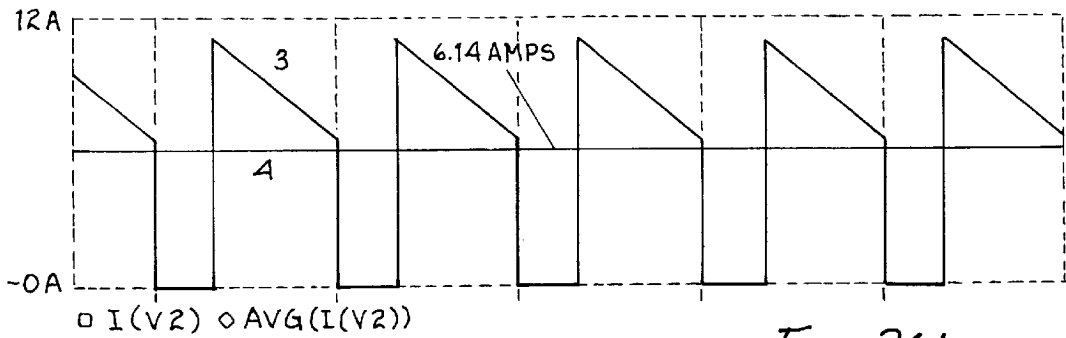


Fig. 21b

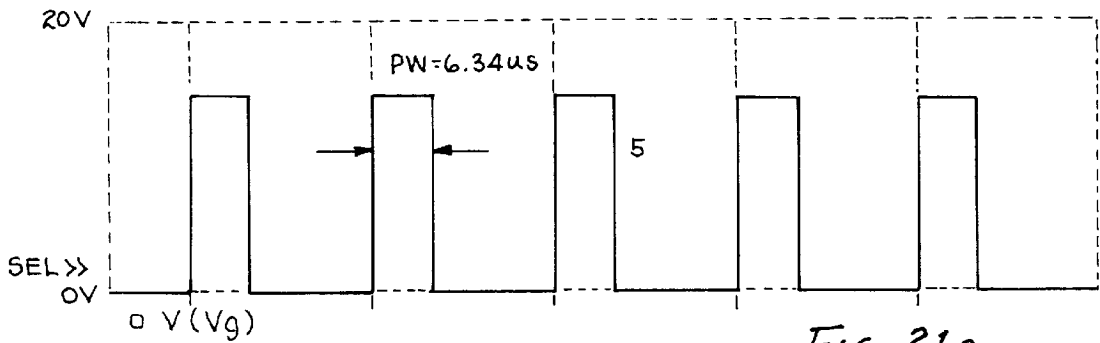


Fig. 21c

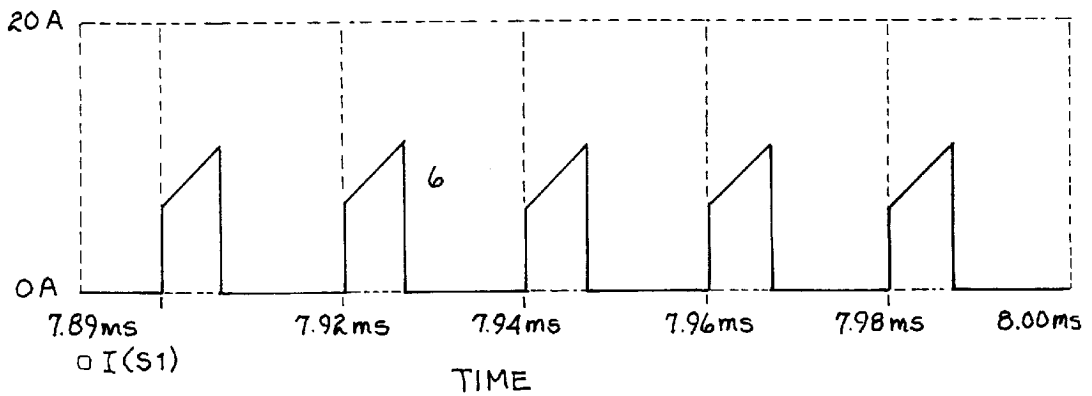


Fig. 21d

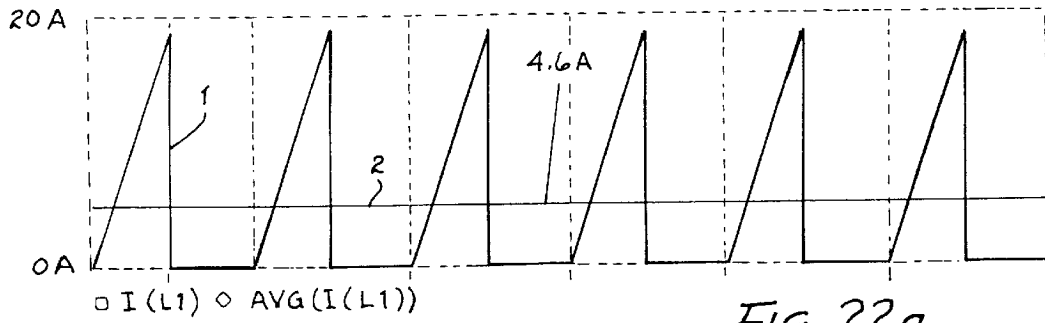


FIG. 22a

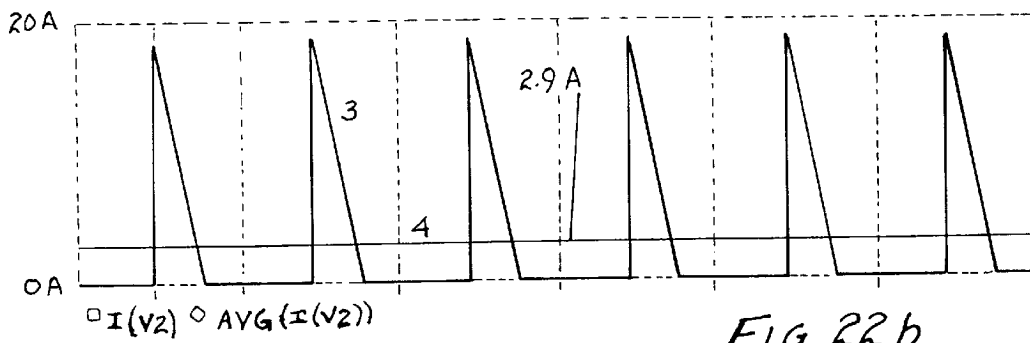


FIG. 22b

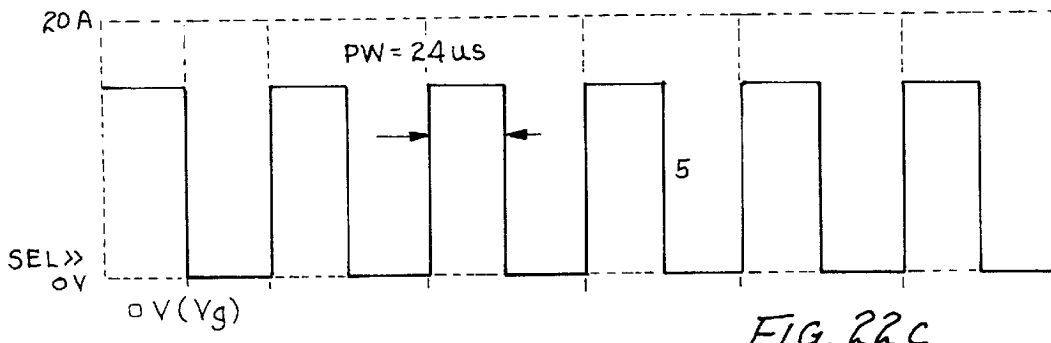


FIG. 22c

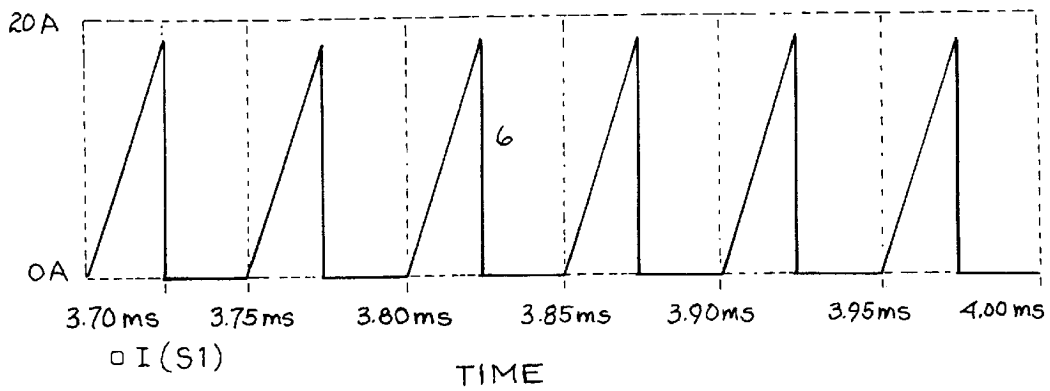
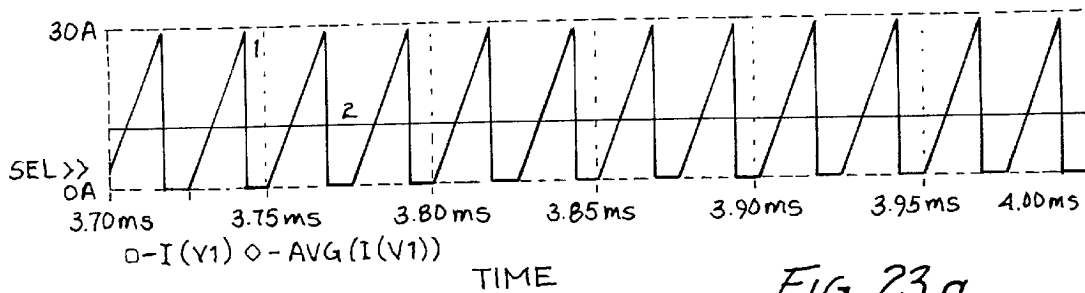
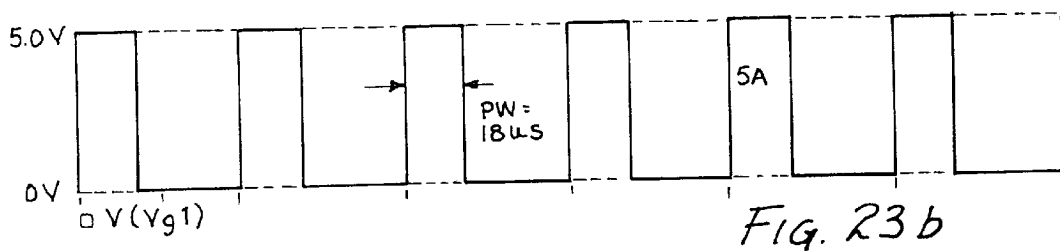
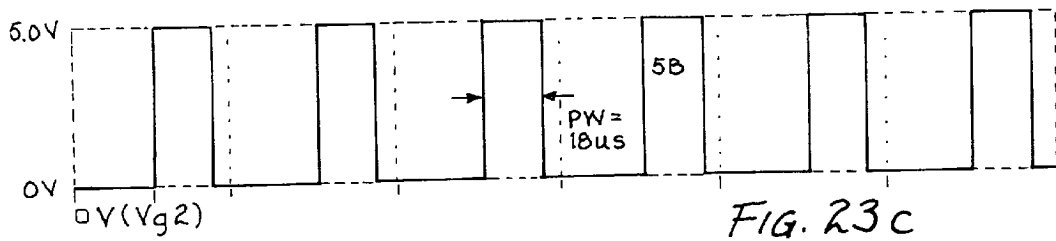
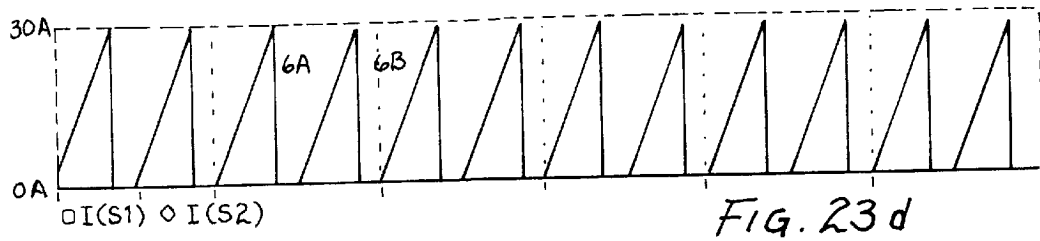
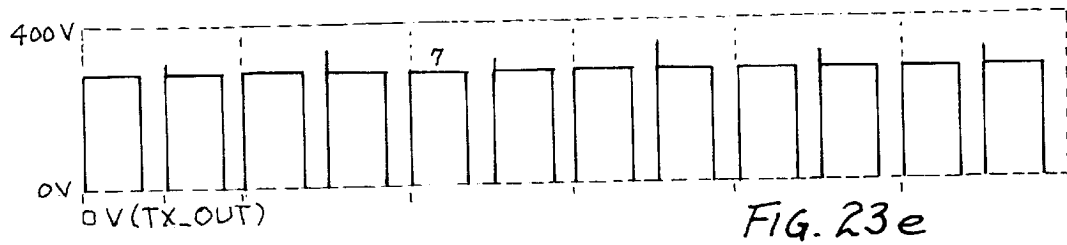
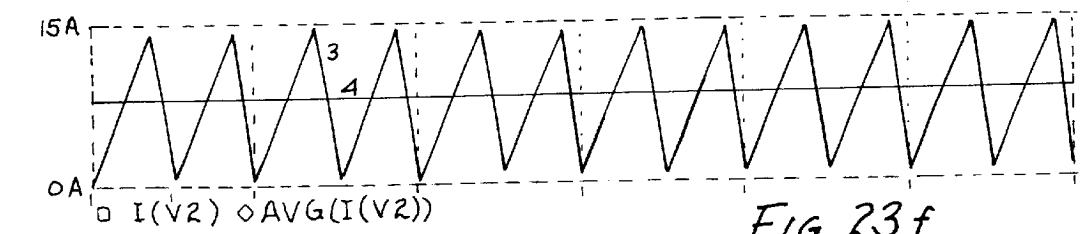


FIG. 22d



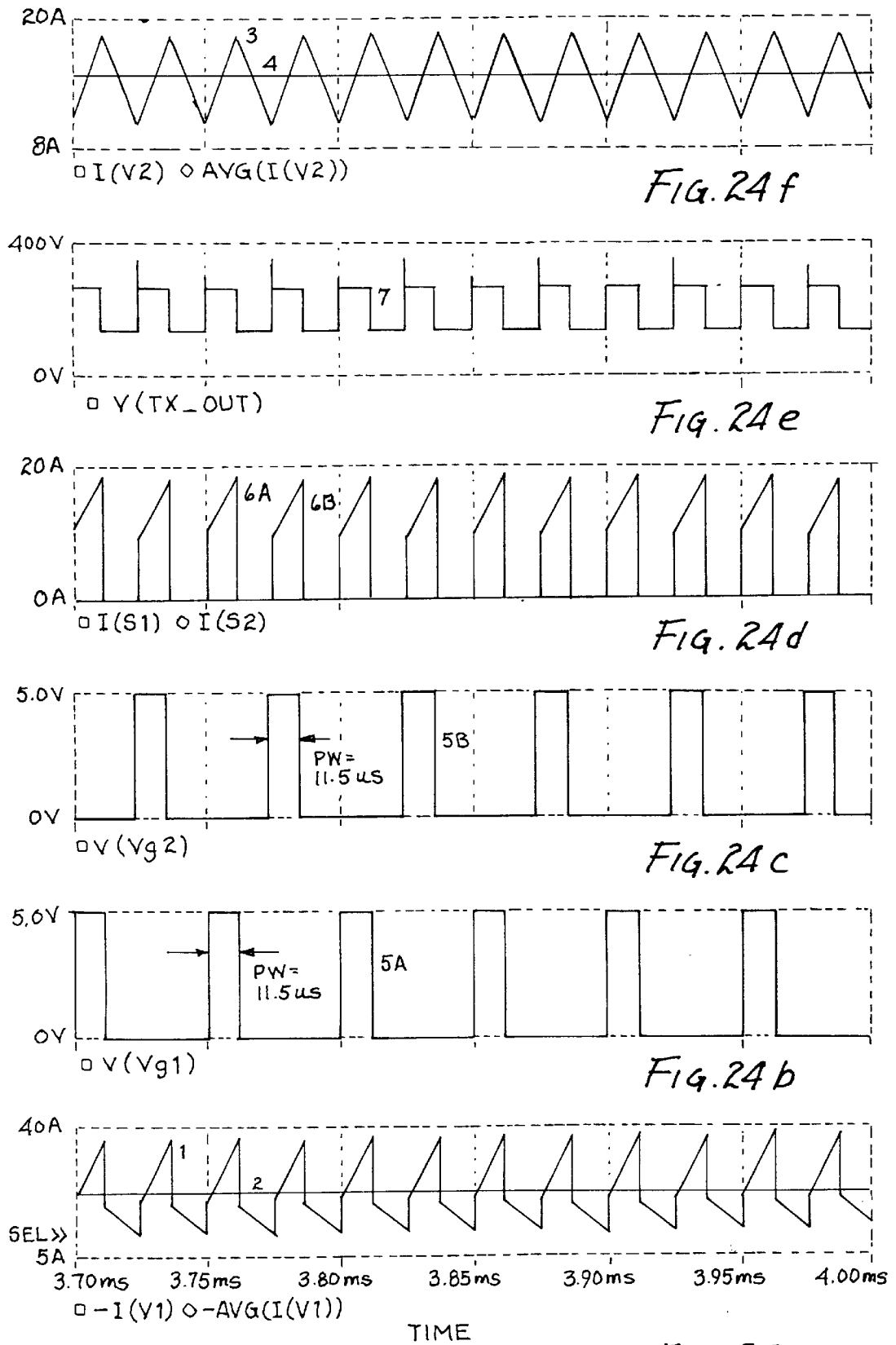


FIG. 24a

## BATTERY CHARGER WITH MAXIMUM POWER TRACKING

### BACKGROUND OF THE INVENTION

#### 1. Field of the Invention

The present invention relates to chargers for batteries and, more particularly, to extracting the maximum power available from a variable energy source to charge the batteries.

#### 2. Description of Related Art

The present invention is directed to apparatus and a method for obtaining maximum power from an energy source, such as a photo voltaic panel, an array of photo voltaic panels, or a windmill. Although the invention is directed to only these two energy sources, the apparatus and methodology presented could be used in conjunction with any constant or variable output electrical energy source. To obtain the maximum power from an energy source requires two items. First, a methodology is required to determine the operating voltage and current that yields the maximum power that can be extracted from the energy source. Second, a circuit is required to extract the energy at the specified voltage and current. The circuit must be capable of accepting a wide range of voltage inputs and a wide range of current inputs. The circuit must also be able to maintain the input voltage and current at the values determined by the methodology to yield maximum energy extraction from the energy source.

Several methodologies and attendant circuitry have been used in the prior art for extracting maximum power from photo voltaic panels. The algorithms seek a voltage and current from the panels that result in maximum power being extracted from the panels. These methodologies are summarized below with reference to illustrative U.S. patents:

a) Differentiation—U.S. Pat. No. 3,384,806 discloses use of the derivative of the output power versus time. A small sinusoidal signal is added to the control voltage of a pulse width modulation (PWM) controlled buck regulator and the time derivative of the output power is observed. Depending on the value of the derivative, a correction to the PWM control signal is obtained to yield maximum power extraction. A problem with this methodology is that it does not observe the entire current-voltage (I-V) characteristic of a photo voltaic panel and can lock on to a point that is a local maximum rather than an absolute maximum.

b) Open Circuit Voltage—In U.S. Pat. No. 4,873,480 and U.S. Pat. No. 4,604,567, the open circuit voltage of a photo voltaic panel or an array of panels is treated as directly being proportional to the voltage of the panels where maximum power can be extracted. The signal obtained from the open circuit voltage can then control a circuit that uses the signal to determine how much power to extract from the photo voltaic panels. The problem with this methodology is that the selection of the maximum power point does not consider the power extracted from the panels. It assumes that a given open circuit voltage accurately determines the operating point for maximum power extraction. If the operating point is incorrect or slightly inaccurate, operation at the maximum power point will not occur since the power extracted is not actually measured.

c) Tracking Cell—Many methodologies use a separate tracking cell to measure the amount of insolation incident on a photo voltaic array; note U.S. Pat. Nos. 4,873,480 and 3,696,286. The tracking cell yields information that could be used to select the maximum power point; that is, the open circuit voltage of a tracking cell is used. This methodology

assumes that the cell has identical properties to each cell in a photo voltaic array; the open circuit voltage of the cell is treated as proportional to the open circuit voltage of the photo voltaic array. The open circuit voltage can then be used to select the maximum power point. If the assumption made is not correct, maximum power will not be drawn out.

d) Dithering—U.S. Pat. No. 5,327,071 discloses a switching circuit that controls the power extracted from a solar panel. Typically, the power is controlled by pulse width modulation (PWM) and a control input is available for controlling the power drawn from the energy source. The dithering methodology works as follows. The present operating power is recorded. The control signal is then increased or decreased (dithered) by a certain amount. The power at the new point is observed. By comparing the power at the original operating point to the power at the dithered points, a new maximum energy extraction operating point can be found, or the present operating point can be retained. A problem with this methodology is that it does not observe the entire I-V characteristic of a photo voltaic panel(s) and can lock on to a point that is a local maximum rather than an absolute maximum. U.S. Pat. No. 5,654,883 discloses use of a dithering method that examines  $m$  points above and below a present operating point. The power at each point is compared and a new maximum power operating point is selected. By examining  $m$  points, this method helps reduce the problem of finding a local maximum rather than an absolute maximum. However, it cannot eliminate the problem since it only examines  $m$  points rather than the entire I-V characteristic.

### SUMMARY OF THE INVENTION

The present invention is directed to apparatus for extracting maximum power from a variable voltage energy source, such as a photo voltaic panel or an array of photo voltaic panels, to charge one or more batteries. All of the chargers described will permit charging batteries at a higher voltage than the voltage of the energy source.

A primary object of the present invention is to allow the photo voltaic panels to operate at any voltage independent of the battery voltage and still obtain a charging current.

Another object of the present invention is to charge a battery from an energy source while extracting maximum power from the energy source that may be at a higher or at a lower voltage than the battery.

Yet another object of the present invention is to charge batteries with smaller photo voltaic arrays than is presently possible.

Still another object of the present invention is to reduce the parts count of a battery charger deriving power from a photo voltaic array.

These and other objects of the present invention will become apparent to those skilled in the art as the description thereof proceeds.

### BRIEF DESCRIPTION OF THE DRAWINGS

The present invention will be described with specificity and clarity with reference to the following drawings, in which:

FIG. 1 illustrates a block diagram of a prior art charger;

FIG. 2 illustrates a circuit for a prior art charger, such as that shown in FIG. 1;

FIG. 3 is a flow chart of a power maximization algorithm;

FIG. 4 is a flow chart of a mini-sweep algorithm;

FIG. 5 is a flow chart of an I-V characterization algorithm;  
 FIG. 6 is a simplified block diagram of the present invention;

FIG. 7 is a circuit diagram illustrating two feedback signals for controlling the charging current;

FIG. 8 illustrates the I-V characteristics of two different photo voltaic panels;

FIG. 9 illustrates a charger for regulating the input current;

FIG. 10 illustrates a simplified current mode boost circuit;

FIG. 11 illustrates use of a computer to control the operation of the charger depicted in FIG. 10;

FIG. 12 illustrates a charger using a flyback topology for regulating the input current;

FIG. 13 illustrates a charger similar to the charger shown in FIG. 11 except for higher input/output voltages;

FIG. 14 illustrates a charger using a push-pull topology for regulating the charging current;

FIG. 15 illustrates a charger using a push-pull topology for regulating the input current;

FIG. 16 illustrates a charger capable of using a transformer of much smaller size than the transformer shown in FIGS. 7 and 14;

FIG. 17 illustrates a charger similar to the charger shown in FIG. 16 except that the input current is regulated;

FIGS. 18a-18d illustrate the waveforms for the charger shown in FIG. 7 operating in the continuous mode;

FIGS. 19a-19d illustrate the waveforms attendant the charger shown in FIG. 7;

FIGS. 20a-20d and 2a-21d illustrate waveforms attendant the charger shown in FIG. 9;

FIGS. 22a-22d illustrate waveforms attendant the charger shown in FIG. 12;

FIGS. 23a-23f illustrate waveforms attendant the chargers shown in FIGS. 14 and 15; and

FIGS. 24a-24f illustrate waveforms attendant the chargers shown in FIGS. 16 and 17.

### DESCRIPTION OF THE PREFERRED EMBODIMENT

A basic prior art charger 10 for photo voltaic systems is shown in FIG. 1. A photo voltaic array of panels 12 provides a DC voltage which is the energy source for the charger. A typical 48 V system (a system that uses combination of batteries configured for a nominal voltage of 48 V) would use four 12 V photo voltaic panels giving a typical voltage between 48 and 80V. For a 48 volt system, batteries 14 will typically have voltages in the range of 44 to 60 V DC. When the voltage provided by the photo voltaic panel is greater than the battery voltage, diode 16 will turn on and the photo voltaic panel will charge the battery. If the voltage of the photo voltaic panel is less than the battery voltage, the diode will be off and no current will flow. This charger has the following problems: 1) When the battery is charging, the charging current is not regulated and not controlled; 2) No charging is possible if the photo voltaic panel voltage is lower than the battery voltage. This results in lost energy; 3) There is no way to vary the charging current to extract the maximum amount of power from the photo voltaic panel; 4) The voltage of the photo voltaic panel varies with temperature. As temperature increases, the photo voltaic panel voltage decreases. Locations with large amounts of insolation (energy flux from the sun) usually have high ambient

temperatures. If temperatures are high enough, even with large amounts of insolation, no charging will be possible because the photo voltaic panel voltage is less than the battery voltage; and 5) The voltage of the photo voltaic panel decreases as the current drawn from it increases. With the photo voltaic panel output hooked up as an open circuit, there will be no current drawn from the panel and the voltage will be at its maximum. Since the current is zero, no power is drawn from the panel. With the photo voltaic panel output shorted, the current will be at its maximum but the output voltage will be close to zero. This situation also corresponds to close to zero output power. When the voltage is somewhere between 0 and its maximum value, and when the current is somewhere between 0 and its maximum value, the power drawn from the photo voltaic panel is maximum. This maximum point varies with ambient temperature, insolation, manufacturing tolerances, and age. The diode charging method does nothing to extract the maximum power from the photo voltaic panel.

The circuit for a second common prior art charger 20 for charging is shown in FIG. 2. This circuit is a switching regulator that uses a "buck" configuration. Examples of this prior art are shown and described in U.S. Pat. Nos. 4,873,480, 3,384,806, and 5,327,071 discussed above. There are several variations of this circuit. When used without inductor 22, charger 20 becomes an on/off charger. When MOSFET 24 is on, batteries 26 are charged from photo voltaic array 28. The MOSFET can also be controlled by a pulse width modulation (PWM) signal generated by control circuit 30 as a function of current monitor 32 to vary the charging current when the batteries are nearing a fully charged state. The MOSFET is turned off when no charging current is required.

When the inductor is included in the circuit shown in FIG. 2, the circuit becomes a conventional "buck" switching circuit topology. With this type of circuit, the input power is equal to the power out, less any losses of the circuit. This type of circuit can be configured to (a) control the charging current, (b) turn off the charging current when necessary, and (c) incorporate maximum power tracking to extract the maximum charging energy from the photo voltaic array.

Other circuit topologies have been used to extract maximum power from photo voltaic arrays, as described in U.S. Pat. Nos. 5,027,051 and 5,270,636. These topologies are much more complicated than the topologies of the present invention. These prior art circuits use two switching elements and two inductors in each design. The requirement for increased switches and inductors increases system costs and reduces the circuits' efficiency.

For both of the chargers shown in FIGS. 1 and 2, the photo voltaic array must produce a voltage that is higher than the battery voltage in order to charge the batteries at any rate. This requirement imposes the following limitations: 1) The photo voltaic array requires more panels to achieve a voltage that is high enough to charge the batteries. For example, a 48 V system (a system that uses a combination of batteries configured for a nominal voltage of 48 V) would require four 12 V panels wired in a series configuration. A 24 V system (a system that uses a combination of batteries configured for a nominal voltage of 24 V) would require two 12 V panels wired in a series configuration; and, 2) At high ambient temperatures the voltage produced by photo voltaic panels decreases. To extract maximum power from the panels, the charger must find the current and voltage required by the photo voltaic panel that produces maximum power. With the added constraint that the photo voltaic voltage must be greater than the battery voltage, extracting maximum power from the photo voltaic panel may not be possible.

The maximum power tracking algorithms discussed below eliminate problems such as finding local maxima rather than an absolute maximum, how the maximum power point varies with photo voltaic panel age, insolation, panel temperature, photo voltaic array construction, and manufacturing tolerances. A flow chart of the power maximization algorithm is shown in FIG. 3. The algorithm periodically traces out the entire I-V characteristic of the photo voltaic array. From this data the current and voltage that yield maximum power are determined. The charger, or power converter circuit, is instructed to draw the amount of current from the photo voltaic array that yields maximum power. The converter will draw this current until one of the two following conditions occur:

1) The time out interval is reached. If, after a predetermined interval, the voltage of the photo voltaic array has remained constant, a new complete I-V characterization is generated. A flow chart of the I-V characterization is shown in FIG. 5. A new maximum power point is determined and then the power converter circuit is instructed to draw the amount of current from the photo voltaic array that yields maximum power.

2) The circuit senses a change in photo voltaic array voltage. Changes in voltage trigger mini-sweeps where only a fraction of the I-V characteristic is observed. A flow chart of the mini-sweep function is shown in FIG. 4.

a) If the photo voltaic array voltage increases, it is assumed that more power is available from the array. The sweep starts at the present value of the current and traces out the I-V characteristic for currents greater than or equal to the last operating current. This mini-sweep ends when the photo voltaic array voltage goes below a preset minimum operating voltage.

b) If the photo voltaic array voltage decreases, it is assumed that less power is available from the array. The sweep starts at the present value of the current and traces out the I-V characteristic for currents less than or equal to the last operating current. The sweep is terminated when the power produced by the array falls below a specified percent of the maximum power observed during the sweep.

The chargers discussed here can all be modeled by the simple diagram shown in FIG. 6. Charger 40 draws power from photo voltaic panel 42. The panel provides power as if it were a voltage source. Power is drawn from the photo voltaic panel in such a manner that the power extracted is the maximum that the panel can provide. The power in the form of a voltage source is converted to power in the form of a current source. The current source charges battery 44. By definition of a current source, the current will be constant, independent of the voltage. Thus, the battery will be charged by a controlled current, independent of its voltage. In a practical circuit, the battery voltage is limited by the devices of a specific product. For this type of system, the charging power to the batteries is equal to the power supplied by the photo voltaic panel minus some losses. Essentially,  $P_{in} \cong P_{out}$ .

This methodology solves all of the problems inherent in prior art methods, including: a) Since the batteries are charged with a constant current source, the charging current is regulated; b) Power is drawn from the panel independent of the photo voltaic panel voltage and battery voltage; and c) The charging power is variable and can be chosen to draw maximum power from the photo voltaic panel. The charging power can be varied to draw maximum power independent of the amount of insolation, the temperature, construction tolerances, panel age, and panel array structure.

The general methods discussed herein use current mode topologies. With these topologies the feedback signals are

usually the instantaneous switch current and the output voltage. With a battery charger, the output voltage is fixed at the battery voltage, and thus control of the output voltage is not necessary. The methods discussed here also use two feedback signals. The first feedback signal (FB1) is the instantaneous switch current and is the same for a conventional current mode topology. The second feedback signal (FB2) is an average current, either the average battery current, or average input current (the current provided by a photo voltaic array or windmill). When the feedback is the average battery current, the circuit regulates the charging current. A schematic of such a charger 50 is shown in FIG. 7. The topology is not optimal for extracting maximum power from the energy source. To show that this topology is not optimal, we will use the example of maximum energy extraction from a photo voltaic array. Suppose that we are charging the battery at voltage  $V_o$  and current  $I_o$ . To provide this power, the photo voltaic panel supplies power at voltage  $V_i$  and  $I_i$ . This power level was chosen because it was the maximum power that the panel could supply. Next, suppose that the input voltage decreases by a slight amount,  $\Delta V_i$ . Even though the input changes, the battery voltage remains fairly constant and the topology keeps the output current constant. Thus, even though the input voltage changed, the topology attempts to keep the output power constant. Since the input voltage decreased and the output power remained the same, the current supplied by the photo voltaic array must increase to keep the input power equal to the output power. A characteristic of photo voltaic panels is that once you find the voltage and current at the point of maximum power, any current above that point of maximum power causes a large decrease in photo voltaic panel voltage.

The I-V characteristic of two different photo voltaic panels are shown in FIG. 8. The top graph is the I-V characteristic for a 50 V photo voltaic panel and the bottom graph is for a 12 V photo voltaic panel. Both graphs show how the I-V characteristic varies with cell temperature and the amount of insolation on the panel. The plots show the location of the maximum power points ( $P_{max}$ ) for each curve. Note that for all curves, when the panel is operating at the maximum power point, a small increase in current drawn from the panel results in a very large decrease in panel voltage. With the charger shown in FIG. 7, when there is a slight negative  $\Delta V_i$ , the circuit requires the photo voltaic current to increase. This increase in photo voltaic current causes a further decrease in photo voltaic voltage. The circuit responds to the decreased voltage by asking for more current which further decreases the photo voltaic voltage. Eventually the photo voltaic array clamps at a maximum current with a small photo voltaic voltage, typically 6 V or less. This point is far from the maximum power point and delivers a minute amount of power. Thus we see that a current mode topology used with the feedback signals attendant the circuit shown in FIG. 7 will respond to a negative change in photo voltaic voltage by causing the photo voltaic panel to clamp at maximum panel current and low panel voltage resulting in a very small amount of power being extracted from the panel. This instability cannot be easily controlled by software.

To avoid this problem, the feedback connection shown in FIG. 7 can be changed to monitor the average current from the source. The circuit for a charger 70 embodying this topology is shown in FIG. 9. If there is a small change in input voltage, the circuit keeps the input current at the same average value and does not cause the clamping behavior as seen in the topology of the circuit for charger 50 shown in FIG. 7. In fact, for charger 70 (FIG. 9), changes in input

voltage go relatively unnoticed by the circuit. The topology of charger **50** (FIG. 7) is essentially a constant output power circuit since the output voltage is kept relatively constant by the batteries. Since the topology of charger **50** (FIG. 7) controls constant power, the input current cannot be regulated. The topology of charger **70** (FIG. 9) regulates the input current. Since drawing too much current causes the clamping behavior in photo voltaic arrays, this topology eliminates the problem by regulating photo voltaic array current.

Three possible embodiments of the invention will be discussed below. Each uses the method of current mode feedback with one feedback signal being the instantaneous switch current and the other feedback signal being the average current drawn from the energy source. However, any topology that uses these two feedback signals in a current mode topology would be considered an embodiment of the invention.

A first embodiment identified as Current Mode Boost Topology is shown in FIG. 10 as a block diagram of a 48 volt system. A charger, labeled as Current Mode Boost Circuit **70** provides several functions: a) It allows charging of battery **72** when the photo voltaic voltage is less than the battery voltage; b) The current drawn from the energy source (an array of photo voltaic panels **74** in this case) is controlled by the boost circuit; c) The current can be selected to achieve maximum power from the photo voltaic panel.

The circuit topology for this block diagram is shown in FIG. 9. This is a topology similar to boost converter topologies used in current mode boost DC-DC voltage converters. For a boost DC-DC voltage converter, the input voltage (photo voltaic panel) is less than the output voltage (battery voltage). For current mode boost DC-DC voltage converters, the controller monitors the switch current and output voltage and maintains constant peak switch current and constant output voltage. The purpose of a DC-DC voltage converter is to maintain constant output voltage.

We are using this topology differently. The battery voltage is constant and does not need to be controlled. Our circuit monitors the instantaneous switch current and average input current, and maintains constant peak switch current and constant average input current through PWM control. We believe that this topology used with current mode control that controls the peak switch current and average input current to be unique. Although a boost topology works best at lower system voltages, it can be applied to high voltages as well.

The complete charger **80** is shown in FIG. 11. A computer **82** is used to control the behavior of the boost converter. The computer provides the following functions:

- 1) It monitors the output of several sensors **84**. These may include, but are not limited to the photo voltaic voltage and current, battery voltage and charging current, battery temperature, photo voltaic temperature, and ambient temperature.
- 2) Data collection: The quantities monitored/measured can be saved in memory **86**.
- 3) Variable charging algorithm: The charging current can be chosen according to different criteria and can be changed by software. Examples are: (1) Charge using maximum power available from photo voltaic; (2) Charge using an algorithm specified by a specific battery manufacturer.
- 4) A MODEM **88** for a cellular phone is provided to allow for: (1) the data to be downloaded remotely; (2) the charger behavior and charging algorithm to be changed remotely; and (3) the charger algorithm to be customized for each user. This is unique among chargers.

A second embodiment identified as Current Mode Flyback Topology is shown in FIG. 12. It uses the same basic structure as shown in the block diagrams in FIG. 10 and FIG. 11 except that the block labeled Current Mode Boost Circuit would be labeled as Current Mode Flyback Circuit. We see once again that this circuit monitors the peak switch current and the average current drawn from the power source. This embodiment could be used for different voltage and current levels than the boost topology shown in FIG. 9. However, the method behind both embodiments is equivalent.

A third embodiment identified as Current Mode Push-Pull Buck Boost Topology is shown in FIG. 13 for use with higher voltage systems. This system is essentially the same as the one shown in FIG. 11 but the photo voltaic array and battery voltages are higher. In almost all cases the battery voltage is higher than the photo voltaic voltage. The chargers discussed here still use the basic idea of converting power supplied in the form of a voltage source from the photo voltaic panel to power in the form of a current source to charge the batteries. A computer provides the same functionality as was discussed for the circuit block diagram shown in FIG. 11.

The additional unique items here are four additional circuit topologies. FIG. 14 shows a topology that uses a transformer. This circuit is also a commonly used topology for DC-DC voltage converters. For DC-DC voltage converters, the controller monitors the switch current and output voltage, and maintains constant peak switch current and constant output voltage. The purpose of a DC-DC voltage converter is to maintain constant output voltage.

We are using this topology differently from a conventional push-pull DC-DC voltage converter. The battery voltage (output voltage) is constant and does not need to be controlled. Our circuit monitors the switch current and output current, and maintains constant peak switch current and constant average output current. We believe that this topology used with current mode control that controls the peak switch current and average output current to be unique.

As with charger **50** shown in FIG. 7, charger **90** shown in FIG. 14 does not lend itself to maximum power tracking of photo voltaic panels. To optimize the circuit, the current monitor is moved from monitoring the battery current to monitoring the photo voltaic current. The topology of such a charger **100** is shown in FIG. 15. Since this circuit controls the current drawn from the photo voltaic array, it allows control of the power drawn from the photo voltaic array and facilitates maximum power tracking.

FIG. 16 shows a topology of a charger **110** that uses a transformer **T1** in a unique topology. This circuit is not commonly used in DC-DC voltage converters. Our circuit monitors the switch current and output current, and maintains constant peak switch current and constant output current. We believe (1) that this topology is unique, and (2) that this topology used with current mode control that controls the peak switch current and output current to be unique.

The benefit of the charger shown in FIG. 16 is that, for a specific power level, the power supplied by the transformer is one half the power that must be supplied by the transformers of the chargers shown in FIG. 14 and FIG. 15. This greatly reduces the cost of the design and increases the efficiency.

As with the chargers shown in FIGS. 7 and 14, the charger shown in FIG. 16 does not lend itself to maximum power tracking of photo voltaic panels. To optimize the circuit, the current monitor is moved from monitoring the battery current to monitoring the photo voltaic current. The topology

for such a charger **120** is shown in FIG. **17**. Since this circuit controls the current drawn from the photo voltaic array, it allows control of the power drawn from the photo voltaic array and facilitates maximum power tracking.

Details of the circuits and their operation will be described in further detail below. Furthermore, the waveforms of the signals attendant the circuits will be reviewed.

FIG. **7** illustrates the basic circuit building blocks for current mode battery charger **50**. Control circuit **52** includes a computer for data collection and a current mode pulse width modulator (PWM) integrated circuit (IC) for controlling the action of a switching device, such as switch (**S1**), which may be a MOSFET as shown. The purpose of the computer is to monitor the input and output power of charger **50** and to adjust the reference signal to the current mode PWM IC so that the current drawn extracts maximum power from photo voltaic (PV) array **56**. The reference signal to the PWM IC is an analog voltage between 0 and 5 V. A higher reference voltage draws higher average current from the PV array and higher average charging current to batteries **58**. The behavior of the circuit is controlled by the PWM IC. This IC is a typical PWM current mode control IC such as the industry standard UC 3825. This IC has a single control input (the reference signal is not shown) that is used to specify the average current the switching circuit is to draw. This signal is provided by the microprocessor. The PWM IC has two feedback inputs (FB1 and FB2) on conductors **60,62**, respectively. Signal FB1 measures the instantaneous switch current (the voltage across R1). Signal FB2 is the voltage feedback signal and in a typical power supply circuit is used to feedback the output voltage. The output signal Vg of the control circuit on conductor **64** is the gate drive output of the current mode PWM IC. When this output is high (Vg equal to 12 to 15 V), switch **S1** will turn on and conduct. When Vg is low (Vg close to zero), switch **S1** will turn off and no longer be in a conducting state.

The operation of the circuit is as follows. When switch **S1** is closed, the voltage of V1 will appear across inductor L1 (assuming that resistor R1 is small). This causes the current through the inductor to rise in the form of a ramp. The equation that governs the current through inductor L1 is:

$$I(L1) = \frac{1}{L1} \int_{t_0}^t V_{L1}(t) dt + I(t_0) \quad (\text{EQUATION 1})$$

V<sub>L1</sub> is the voltage across inductor L1. Since resistor R1 is small, the voltage across inductor L1 can be assumed to be approximately equal to the PV array voltage V1, which is constant. Since the voltage produced by a PV array is relatively constant relative to the 50 kHz switching frequency of the charger, the voltage across inductor L1 can be assumed to be constant at V1. With V<sub>L1</sub> constant at V1, Equation 1 reduces to:

$$I(L1) = \frac{V_1}{L1} (t - t_0) + I(t_0) \quad (\text{EQUATION 2})$$

This is the equation for an increasing ramp and I(t<sub>0</sub>) is the initial condition of the current. Thus, we see that when switch **S1** is closed, the current through inductor L1 is an increasing ramp with slope proportional to the PV array voltage. A higher PV array voltage yields a steeper ramp and a lower PV array voltage yields a less steep ramp.

The property of inductor L1 is such that the current may not change instantaneously. When switch **S1** opens, current through inductor L1 must continue to flow. When switch **S1**

is open, current through inductor L1 will flow through diode D1 and into battery **58**. When current flows through the diode, assuming that the voltage across the diode is constant and small, the voltage across inductor L1 is approximately equal to V1-V2. For a boost converter, V1 is smaller than V2 so the voltage across inductor L1 is the opposite polarity when compared to the voltage across the inductor L1 when switch **S1** was in the conducting state. V1 and V2 are relatively constant so the voltage across inductor L1 is basically constant. We can let V<sub>L1</sub> in Equation 1 be equal to V1-V2. Since these voltages are constant, solving Equation 1 when switch **S1** is off yields:

$$I(L1) = \frac{V_1 - V_2}{L1} (t - t_0) + I(t_0) \quad (\text{EQUATION 3})$$

Since V1 is less than V2, Equation 3 is a ramp with a negative slope. Thus, when switch **S1** is open, the current through the inductor is a decreasing ramp.

A typical current wave form for the inductor L1 is shown in FIG. **18a**, waveform **1**. The waveform shown is for a switching circuit operating in the continuous mode of operation. In this mode, the current through the inductor never goes to zero. In discontinuous mode, the current through the inductor is given by similar equations, however, the point of minimum inductor current is zero. Our invention can be run in either continuous or discontinuous modes.

Thus far, the discussion shows how the circuit determines the inductor current. The following is a discussion of how the current mode PWM IC regulates the operation of the circuit. When switch **S1** is closed, the current through inductor L1 increases. When switch **S1** is closed, diode D1 is off and the inductor current is equal to the switch current. The switch current is shown in FIG. **18b**, waveform **6**. The control for the switch is shown in FIG. **18c**, waveform **5**. When the voltage of waveform **5** is high (15V in this example), switch **S1** is on and the inductor current is equal to the switch current. When the voltage of waveform **5** is low (0 volts in this example), switch **S1** is off and the current through the switch is zero.

Referring again to FIG. **7**, resistor R1 is small enough so that it does not affect the operation of the circuit. However, the voltage across resistor R1 is proportional to the current through switch **S1**. This voltage is provided to the current mode PWM IC by feedback signal FB1 on conductor **60**. The PWM IC monitors the switch current (voltage across resistor R1). Switch **S1** remains on to allow the current through inductor L1 to increase. When the switch current, equal to the inductor current, reaches a peak value determined by the PWM IC, switch **S1** turns off and inductor L1 forces current into the batteries **58**. The switch remains off for the remainder of one 50 kHz PWM period. It is important to note that the PWM IC controls the peak inductor current. The point that the PWM IC chooses to be the peak inductor current (also switch **S1** current) is determined by feedback signal FB2 on conductor **62**. Feedback signal FB2 is a voltage proportional to the average charging current into batteries **58** (V2). A current mode feedback method works as follows. If the voltage provided by feedback signal FB2 is too small when compared to the reference signal, the switch current (also inductor current) is allowed to increase. A larger inductor current will deliver more current to the batteries. More current to the batteries will result in a larger feedback signal FB2. Feedback signal FB2 is compared internally to a reference signal provided by the microprocessor. With negative feedback, the peak inductor current will be such that feedback signal FB1 on conductor **60** will

equal the internal reference signal provided by the micro-processor. If a larger charging current is desired, the internal reference signal is increased. This increase will allow for a larger peak inductor current. A larger peak inductor current will deliver more average charging current to batteries **58**.

Capacitor **C1** is not necessary in an ideal circuit where there is no inductance in the connecting conductor **66** of FIG. **7**. However, in a real circuit, charger **50** may be many feet away from batteries **58**. This results in a large inductance for conductor **66**. This inductance could cause large voltage spikes at point **2** in the circuit. To eliminate these spikes, capacitor **C1** is added. This capacitance must be large enough to swamp out the inductance of conductor **66**. The ripple current specification of this capacitor must be chosen to be one half of the maximum average battery current.

The operation of the circuit for charger **50** shown in FIG. **7** maintains constant average charging current. The circuit includes a current monitor device, monitor **68**, that monitors the average charging current and the current mode PWM IC maintains the peak inductor current such that the average charging current is constant. In a classic current mode PWM power supply, feedback signal **FB2** on conductor **62** is the output voltage. If this were the case, the circuit would control the peak inductor current such that the output voltage would remain constant. A circuit of this type is well documented in the literature. In our circuit, the output voltage (**V2**) is a battery **58**. The property of a battery is that its voltage is constant and there is no need to regulate the voltage. This allows use of feedback signal **FB2** on conductor **62** to represent the average charging current produced by monitor **68**. Thus, this circuit is very similar to a classical current mode voltage power supply except that charging current rather than output voltage is regulated.

Referring to FIGS. **19a–19c**, the waveforms attendant charger **50** illustrated in FIG. **7** will be described. Waveform **5** shown in FIG. **19a** is the switch (**S1**) control voltage (**Vg**). When this voltage is high, the switch is on. When the voltage is low, the switch is off. Waveform **1** shown in FIG. **19b** is the inductor current and waveform **2** is the time average of the inductor current, waveform **1**. Waveform **3** shown in FIG. **19c** is the charging current (current into the batteries **58**) and waveform **4** is the time average of waveform **3**. Waveform **6** shown in FIG. **19d** is the switch current. When waveform **5** is high, switch **S1** is on. In this state, diode **D1** is off and the charging current is zero. Also in this state, waveform **1** (the current through inductor **L1**) is equal to waveform **6** (the current through **S1**). Thus, when switch **S1** is closed, the inductor current increases and is equal to the switch current, and the charging current is zero. When waveform **5** is low, switch **S1** is off. In this state, diode **D1** is on and the charging current (waveform **3**, FIG. **19c**) is equal to the inductor current (waveform **1**, FIG. **19b**). Also in this state, the switch current is zero.

Charger **50** shown in FIG. **7** maintains a constant charging current. This circuit is very useful when the energy supply (**V1**) is well known and constant. If **V1** is constant (such as a power supply powered from the line), the circuit of FIG. **7** can be used to closely control the charging current of **V2**. A circuit of this type is very useful when the charging current is the most important parameter.

With chargers powered by PV arrays **56**, the most important parameter is maximum power extraction from the PV array, and charging current is only of concern when batteries **58** are near full charge. Charger **50** of FIG. **7** is not well suited for this application since it does not control the current from the PV array. A simple example that will illustrate this problem is shown in the comparison between

the waveforms of FIG. **18** and FIG. **19**. The waveforms shown in FIGS. **18a–18d** are for **V1=45 V** and **V2=60 V**. The waveforms shown in FIGS. **19a–19d** are for **V1=50 V** and **V2=60 V**. These waveforms are generated by charger **50** shown in FIG. **7**. Starting with the waveforms shown in FIG. **19** where **V1** is at 50 volts and **V2** is at 60 V, the average charging current (waveform **4**, FIG. **19c**) is held constant at 6.14 A. With a charging current of 6.14 A into batteries **58** which are at 60 V, the charging power is 368.4 W. To maintain this power, with an input voltage (**V1**) of 50 V, the required input current is 7.86 A. An input voltage of 50 V and an input current of 7.86 A results in an input power of 393 W. Note that the input power is greater than the output power. This is expected since the circuit is not 100% efficient. To maintain the average input current of 7.86 A, a pulse width (waveform **5**, FIG. **19a**) of 4.5  $\mu$ s is required. Suppose that **V1** decreases from 50 volts to 45 volts. The waveforms for **V1=45 volts** are shown in FIGS. **18a–18d**. The function of charger **50** is to maintain the average charging current (waveform **4**, FIG. **18d**) constant at 6.14 A. Since **V2** is still at 60 V, the charging power is held constant at 368.4 W. Since the input voltage decreased and the input power is approximately equal to the output power, the input current must be increased. As a result, the average output current (waveform **4**, FIG. **18d**) is held constant by the circuit at 6.14 A. However, to keep the input power constant with reduced input voltage, the average input current (waveform **2**, FIG. **18a**) is increased to 9.02 A. An input voltage of 45 V and an input current of 9.02 A corresponds to an input power of 405 W. In order to increase the average inductor current (waveform **2**, FIG. **18a**), the peak inductor (**L1**) current was increased by increasing switch **S1** on time (waveform **5**, FIG. **18c**). Increasing switch **S1** on time (waveform **5**) increases the duration and peak value of the switch (**S1**) current (**S1**).

As mentioned earlier, the above behavior is undesirable when used with PV arrays. If the PV voltage goes down due to decreased insolation, and the charging circuit asks for more current to keep the input power at the same level, the increase in current will cause the panel voltage to drop. Charger **50** shown in FIG. **7** senses the further decrease in panel voltage and asks for still more input current, causing a further drop in PV array voltage. Thus, this circuit can cause the PV arrays to clamp at minimum voltage and maximum current. This clamping action is undesirable and can be fixed by charger **70** shown in FIG. **9**.

Charger **70** (FIG. **9**) works almost the same as charger **50** (FIG. **7**) and common elements have the same reference numerals. Both chargers use a current mode control PWM IC. When a current mode PWM IC is used to control the output voltage of a power supply, feedback signal **FB2** on conductor **72** monitors the output voltage and the peak inductor (**L1**) current is controlled to maintain a constant output voltage. In charger **50** (FIG. **7**), feedback signal **FB2** on conductor **62** monitors the average charging current and the peak inductor (**L1**) current is controlled to maintain a constant average charging current. In charger **70** (FIG. **9**), feedback signal **FB2** on conductor **72** monitors the average input current at monitor **68**, or the current provided by PV array **56**. Since the average input current is monitored, the peak inductor (**L1**) current is controlled so that the average input current is held constant.

Charger **70** allows the input current to be held constant independent of the input voltage. If a change in input voltage occurs, the peak inductor current may change, but the average input current (also the inductor current) will be held constant. An example of this can be seen by comparing the

waveforms of FIGS. 20a–20d and FIGS. 21a–21d. These waveforms are generated by charger 70 (FIG. 9). Note that these waveforms are basically the same as those shown in FIGS. 18a–18d and 19a–19d for charger 50. The primary differences between FIGS. 20a–20d and 21a–21d when compared to FIGS. 19a–19d and 20a–20d result because one circuit maintains constant charging current (FIGS. 7, 18a–18d, 19a–19d) and the other maintains constant input current (FIGS. 9, 20, 21).

The waveforms shown in FIGS. 20a–20d are based on the values of V1 equals 50 V and V2 equals 60 V. The charger maintains a constant input current (waveform 2, FIG. 20a) of 9.03 amps. This corresponds to an input power of 451 W (50 V times 9.03 Amps). The average output current (waveform 4, FIG. 20b) is equal to 7.0 A corresponding to a power of 420 W (60 V times 7.0 amps). Note that the input power is slightly higher than the output power due to losses in the circuit. FIGS. 21a–21d show the waveforms of charger 70 when the input voltage drops to 45 V. Herein, the input current is still held constant at 9.02A (waveform 2, FIG. 21a). However the average output current (waveform 4, FIG. 21b) was allowed to change. The charger maintains constant input current. The input power is 407 W (45 V times 9.02 Amps), and the output power is 368 W (6.14 Amps times 60 V).

Note that the waveforms of FIGS. 20a–20d and 21a–21d show that the input and output power change when the input voltage changes. This is because charger 70 (FIG. 9) maintains constant input current. If the input current is held constant and the input voltage changes, the input power must change. This is different from the operation of charger 50 (FIG. 7) which maintained constant output current. In charger 50, the output voltage is held constant by the battery and the output current is held constant by the charger. Since both voltage and current are held constant, the charger maintains constant output power.

Four preferred embodiments of the invention are presented. However, circuit topology is not as important as the methodology, which methodology is the use of current mode control with one feedback signal being the instantaneous switch current and another feedback signal being the average current from the energy source. Circuit topologies of a boost converter, flyback topology, push-pull topology, and push-pull-buck-boost topology will be illustrated and described. All of the circuits switching characteristics are similar, and all behave in the same manner when controlled with the current mode feedback method with one feedback signal (FB1) being the instantaneous switch current and the second feedback signal (FB2) being the average current from the energy source. The differences between the circuits are that some may be better suited for different voltage level applications. For example, the boost converter is usually used in low voltage applications, and the transformer topologies are better suited for the higher voltage applications. We will also show waveforms for a flyback topology, a push-pull topology, and a push-pull-buck-boost topology. It will become apparent from the waveforms that all of these topologies behave the same when used with current mode control with one feedback signal (FB1) being the instantaneous switch current and the second feedback signal (FB2) being the average current from the energy source. The switching waveforms may be slightly different depending on the topology, but the behavior of the average input current and output current is the same.

The flyback topology for charger 80 shown in FIG. 12 will be described first. The charger is almost exactly like charger 70 (the boost converter) if one considers inductor (L1) (see

FIG. 9) as being split into two coupled inductors (L1 and L2) forming transformer T1. The waveforms for charger 80 are shown in FIGS. 22a–22d. When switch S1 is closed, current will flow through inductor L1 and switch S1. This is shown as waveform 1 (FIG. 22a) and 6 (FIG. 22d). The current is a ramp starting at zero. Feedback signal FB1 on conductor 60 controls the peak switch current so that the average current (waveform 2, FIG. 22a) drawn from the energy supply (PV array V1) is constant. Waveform 5 (FIG. 22c) shows the gate control pulses for switch S1. When Vg is high, the switch is on and current flows through inductor L1, switch S1, and resistor R1. The current is in the form of an increasing ramp and governed by Equation 2. Resistor R1 is a current sensing resistor and is small. It is assumed that the voltage across resistor R1 is so small that we can neglect it in the analysis. While current is flowing through inductor L1, energy is stored in the transformer (T1) core and magnetic flux flows through the transformer (T1) core. The flux in a core cannot go to zero instantaneously, similar to the law that current in an inductor cannot go to zero instantaneously. When switch S1 opens, the current through inductor L1 must go to zero. However, the flux in the core of T1 cannot go to zero instantaneously, and current is forced through inductor L2. Since current was entering the dot terminal 82 of inductor L1 when the core was charged, current will enter the dot terminal 84 of inductor L2 when current is forced through it. Current can flow through diode D1 in this direction, and the energy stored in the core as magnetic flux is delivered to batteries 58 through inductor L2 and diode D1. The current through inductor L2 is shown as waveform 3 in FIG. 22b. The current shown is both the inductor (L2) current, diode (D1) current and battery 58 current. Waveform 4 is the time average of waveform 3 (see FIG. 22b). Looking at waveforms 1, 5, and 3, we see that when waveform 5 is high (FIG. 22c), current flows through inductor L1, charging the core. When waveform 5 goes low, the current through inductor L1 goes to zero, and the current through inductor L2 immediately jumps to its peak value and then discharges to zero. The waveforms show the operation of this circuit in a discontinuous mode.

The waveforms shown in FIGS. 22a–22d are for a 1:1 turns ratio between inductors L1 and L2, and with V1=45 V and V2=60V. Since the turns ratio is 1:1, the peak values of current for waveforms 1 and 3 (FIGS. 22a and 22b) are the same. However, inductor L1 is charged by V1 which is 45 volts, and inductor L2 is discharged by V2 which is 60 V. Since V2 is larger than V1, inductor L2 discharges from its peak current value to zero faster than inductor L1 charges from zero to the peak value.

Capacitor C1 is not necessary in an ideal circuit where there is no inductance in the connection conductor 66. However, in a real circuit, charger 80 may be many feet away from batteries 58. This results in a large inductance for conductor 66. This inductance could cause large voltage spikes at point 2 shown in FIG. 12. To eliminate these spikes, capacitor C1 is added. This capacitance must be large enough to swamp out the inductance of conductor 66. The ripple current specification of this capacitor must be chosen to be one half of the maximum average battery current.

With chargers 50,70 (the boost circuits), the average currents through V1 and V2 behaved depending on the location of feedback signals FB2 as shown in FIGS. 7 and 9, respectively. That is, when signal FB2 measured the average output current, the feedback signal resulted in the output current being constant and independent of input voltage changes. When signal FB2 measured the average input current, the feedback signal resulted in the input

current being constant and independent of input voltage changes. In charger **80** shown in FIG. **12**, signal **FB2** is measuring the average input current, and thus the circuit is used to charge batteries **58** while drawing constant current from the energy source (PV array **56**). This is the preferred method of extracting energy from the energy source to eliminate the above-described problem of the photo voltaic array clamping at minimum voltage and maximum current.

FIGS. **14** and **15** show chargers **90,100** having push-pull topologies with the two different connections for feedback signal **FB2**. In FIG. **14**, feedback signal **FB2** on conductor **92** is the average charging current, and thus this circuit maintains constant average charging current. In FIG. **15**, feedback signal **FB2** on conductor **102** is the average input current from energy source PV array **56** (**V1**), and thus this circuit maintains constant input current. The feedback signals in each of chargers **90** and **100** make these circuits behave the same as the boost circuit charger **50** shown in FIG. **7** and the boost circuit charger **70** shown in FIG. **9**. However, chargers **90** and **100** are better suited to higher voltage applications. The waveforms for the chargers shown in FIGS. **14** and **15** are shown in FIGS. **23a-23f**.

The push-pull topology is different from the boost and flyback topologies in that when either of the switches **S1,S2** are closed, energy is delivered to the battery **58** (**V2**). For the boost (FIGS. **7** and **9**) and the flyback (FIG. **12**) topologies, when switch **S1** was closed, energy was stored in inductor **L1** or transformer core **T1**. When switch **S1** is opened, the stored energy was delivered to the battery (**V2**) as charging current. For all of the push-pull topologies discussed (FIGS. **14** through **17**), energy is delivered to the battery **58** (**V2**) while switches **S1,S2** are closed. The push-pull topologies use two gate signals (**Vg1** and **Vg2**) on conductors **96,98** to provide equal alternating pulses to the switches. Switches **S1** and **S2** are never closed (on) at the same time. The pulses are of equal pulse-width and 180 degrees out of phase. These waveforms are shown as waveforms **5A** and **5B** in FIGS. **23b** and **23c**. When gate signal **Vg1** is high, current flows through switch **S1** and when gate signal **Vg2** is high, current flows through switch **S2**. When either switch **S1** or **S2** is closed (on), current is drawn from the energy source, PV array **56** (**V1**, see waveform **1** in FIG. **23a**), current flows through either switch **S1** or **S2** (waveforms **6A** and **6B** shown in FIG. **23d**) and current flows through inductor **L1** (waveform **3**, shown in FIG. **23f**) into batteries **58** (**V2**). Waveform **1** (see FIG. **23a**) is the instantaneous current drawn from the energy source, PV array **56** (**V1**), waveform **2** (see FIG. **23a**) is the time average of waveform **1** or the average current drawn from the energy source (**V1**), waveform **3** is the instantaneous charging current and also the current through inductor **L1**, and waveform **4** (see FIG. **23f**) is the time average of waveform **3** or the average charging current.

In this example, **V1** is 140 V and **V2** is 200 V. When either switch **S1** or **S2** is closed, the primary voltage is approximately equal to **V1**. Since the center tap **94** of the secondary of transformer **T1** is grounded, the secondary is directly across battery **58** (**V2**). In order to turn on diode **D1** or diode **D2** and provide charging current to the battery, the voltage produced by the secondary must be greater than **V2**. Since **V1** is less than **V2**, the turns ratio of the secondary to the primary winding must be greater than 1. The waveforms shown in FIGS. **23a-23f** are for a secondary to primary turns ratio of 2 and **V1**=140 V and **V2**=200V. Waveform **1** shows that the primary current is from 0 to 30 A at a primary voltage 140 V. Waveform **7** (see FIG. **23e**) is the waveform at point **5** in FIGS. **14** and **15**. We see that this voltage varies

between 0 and 280 V, resulting from a turns ratio of 2. The secondary current is shown as waveform **3** in FIG. **23f**, which is in the range of 0 to 15 A. Thus, the secondary voltage is twice the primary voltage, and the secondary current is one-half of the primary current, which results from a transformer with a 2:1 turns ratio.

Inductor **L1** and capacitor **C1** of chargers **90,100** shown in FIGS. **14** and **15** is a buck regulator operating in the continuous mode. Inductor **L1** is the only element that limits the charging current when either of switches (**S1** and **S2**) are closed (on). If inductor **L1** were not in the circuit, then when the switches were closed it would be like connecting **V1** directly to **V2** through a transformer. A large and uncontrolled current would flow. The inductor limits the charging current. Inductor **L1** and capacitor **C1** together remove the ripple so that battery **58** (batteries) are charged with an average current. The inductor is represented by waveform **3** shown in FIG. **23f**. Inductor **L1** and capacitor **C1** remove the ripple so that the charging current is represented by waveform **4** shown in FIG. **23f**.

Chargers **110,120** shown in FIGS. **16** and **17** are similar to chargers **90,100** shown in FIGS. **14** and **15** except that center tap (**112,122**) connection of transformer **T1** is connected to PV array **56** (**V1**) and center tap **94** is connected to ground in chargers **90,100**. The feedback method of all of the push-pull topologies is the same as the boost and flyback circuits. When feedback signal **FB2** on conductor **114** measures the average output current, the feedback signal makes the output current constant and independent of input voltage changes. When feedback signal **FB2** on conductor **124** measures the average input current, the feedback signal makes the input current constant and independent of input voltage changes. In FIGS. **7**, **14**, and **16**, feedback signal **FB2** is measuring the average charging current, and chargers **70**, **90** and **110** shown in FIGS. **7**, **14**, and **16**, respectively, are used to charge the battery **58** (**V2**) with a constant current, independent of voltage changes in PV array **56** (**V1**). In FIGS. **9**, **12**, **15**, and **17**, feedback signal **FB2** is measuring the average input current, and chargers **70**, **80**, **100** and **120** shown in FIGS. **9**, **12**, **15**, and **17**, respectively, are used to charge battery **58** (**V2**) while drawing constant current from PV array **56**, the energy source (**V1**).

The different placement of the center taps (**112,122**) in chargers **110,120** shown in FIGS. **16** and **17** when compared to the center taps **94** in chargers **90,100** shown in FIGS. **14** and **15** leads to an advantage in the size of the transformer. In chargers **90,100**, the center tap of the secondary is grounded, and the battery voltage (**V2**) appears directly across the primary. This means that transformer **T2** must supply all of the charging power. For a 2 kW charger, transformer **T1** of chargers **90,100** must be designed to pass 2 kW of power and must have a turns ratio greater than 1. In chargers **100,120**, the center tap of the secondary is connected to PV array **56** (**V1**). When switch **S1** or **S2** is on, the battery voltage appears across the secondary of transformer **T1** plus battery voltage **V1**. In order to charge the batteries, diode **D1** or diode **D2** must be on. For chargers **90,100**, the secondary voltage has to be greater than the battery voltage (**V2**). In chargers **110,120**, center tap **112**, **122**, respectively, is connected to PV array **56** (**V1**). In order to turn on diode **D1** or **D2**, it must be true that the PV array voltage (**V1**) plus the secondary voltage must be greater than the battery voltage (**V2**). Thus, the voltage provided by transformer **T1** need only be large enough to overcome the voltage difference between the PV array voltage (**V1**) and the battery voltage (**V2**).

Since transformer **T1** shown in FIGS. **16** and **17** only provides enough voltage to overcome the difference between

the PV array voltage (V1) and the battery voltage (V2), the transformer handles significantly less power than the transformer needed for the chargers shown in FIGS. 14 and 15. As an example, suppose that the PV array voltage (V1) is 150 V and the battery voltage (V2) is 200 V and we want to charge the battery with a 10 A charging current. Also suppose that the chargers are designed to provide voltage pulses at point 5 in the circuits shown in FIGS. 14 through 17 of up to 250 V. For chargers 90,100 shown in FIGS. 14 and 15, the turns ratio of transformer T1 must be designed such that for a primary voltage of 150 V, the secondary voltage is 250 V. Since the instantaneous voltage produced by the secondary is 250 V, it must supply a charging current of 10 A, and the instantaneous power produced by the secondary is 250V times 10 A or 2.5 kW. For transformers T1 of chargers 110,120 shown in FIGS. 16 and 17, the secondary voltage plus V1 must be equal to 250 V. Or, the secondary must be designed to produce pulses of 250 V-V1=100 V. Since the instantaneous voltage produced by the secondary is 100 V, it must supply the charging current of 10 A, and the instantaneous power produced by the secondary is 100V times 10 A or 1 kW. The advantage of the chargers shown in FIGS. 16 and 17 is that the power rating of transformer T1 is significantly smaller than the transformer needed for the chargers shown in FIGS. 14 and 15. In the above example, the transformer needed for chargers 110,120 was 40% of the size needed for chargers 90,100. In a typical design to accommodate a wide range of voltages, the transformer typically is 50% smaller.

Typical waveforms for the circuits of chargers 110,120 are shown in FIGS. 24a-24f. These waveforms were generated for an input voltage V1=140 V, an output voltage V2=200 V, and a turns ratio of 1:1 for transformer T1. When compared to the waveforms shown in FIGS. 23a-23f, there are two primary differences. In FIG. 23e, waveform 7 goes from 0 to 280 V. This is because of use of a 2:1 transformer T1 with center tap 94 grounded (charger 90,100). Waveform 7 in FIG. 24e goes from 0 to 280 V because of use of a 1:1 transformer T1 with center tap (112,122 for chargers 110, 120) connected to the input voltage (V1) of PV array 56.

Waveform 1 is also different in FIGS. 23a and 24a. In FIG. 23a, waveform 1 goes to zero because the current drawn from the input voltage V1 (PV array 56) goes to zero when switches S1 and S2 are off. This results because when switches S1 and S2 are off, there is no current through the transformer T1 and no current can be drawn from the PV array (V1). In FIG. 24a, waveform 1 never goes to zero. This results because the PV array (V1) supplies both the transformer current and the current through inductor L1. When switches S1 and S2 are off there is no current through transformer T1. However, the PV array (V1) must also supply current to the inductor. The buck regulator represented by inductor L1 and capacitor C1 operates in the continuous mode, so the current through inductor L1 never goes to zero. Since the current through the inductor never goes through zero, and as the PV array (V1) supplies the current for inductor L1 when switches S1 and S2 are off, the current supplied by the PV array (V1) never goes to zero.

While the invention has been described with reference to several particular embodiments thereof, those skilled in the art will be able to make the various modifications to the described embodiments of the invention without departing from the true spirit and scope of the invention. It is intended that all combinations of elements and steps which perform substantially the same function in substantially the same way to achieve the same result are within the scope of the invention.

What is claimed is:

1. A charger for charging a battery with a current mode feedback from an energy source providing electrical power, said charger comprising in combination:

- (a) a switch having a controllable duty cycle;
- (b) first means for providing a first feedback signal commensurate with the instantaneous switch current;
- (c) second means for providing a second feedback signal commensurate with the average current flowing to the battery; and
- (d) a control circuit responsive to said first and second feedback signals, the voltage at the energy source and the voltage at the battery for generating a gate signal to control the duty cycle of said switch and maximize the power level delivered by the energy source to the battery.

2. The charger as set forth in claim 1 including an inductor adapted to pass the current generated by the energy source to said switch.

3. The charger as set forth in claim 2 including a diode disposed between said switch and the battery.

4. The charger as set forth in claim 1 wherein the energy source is a plurality of photo voltaic panels and wherein the battery includes a plurality of batteries.

5. The charger as set forth in claim 1 wherein the energy source is a photo voltaic array.

6. A charger for charging a battery with constant current from an energy source providing electrical power, said charger comprising in combination:

- (a) a switch having a controllable duty cycle;
- (b) first means for providing a first feedback signal commensurate with the instantaneous switch current;
- (c) second means for providing a second feedback signal commensurate with the current drawn from the energy source; and
- (d) a control circuit responsive to said first and second feedback signals, the voltage at the energy source, and the voltage at the battery for generating a gate signal to control the duty cycle of said switch and maximize the power level delivered by the energy source.

7. The charger as set forth in claim 6 including an inductor adapted to pass the current generated by the energy source to said switch.

8. The charger as set forth in claim 7 including a diode disposed between said switch and the battery.

9. The charger as set forth in claim 6 wherein the energy source is a plurality of photo voltaic panels and wherein the battery includes a plurality of batteries.

10. The charger as set forth in claim 6 wherein the energy source is a photo voltaic array.

11. A charger for charging a battery from an energy source which may have a voltage lower than the battery voltage, said charger comprising in combination:

- (a) a switch having a controllable duty cycle;
- (b) first means for providing a first feedback signal commensurate with the instantaneous switch current;
- (c) second means for providing a second feedback signal commensurate with the current drawn from the energy source;
- (d) a transformer having a primary coil in series with the energy source and said switch and a secondary coil in series with the battery; and
- (e) a control circuit responsive to said first and second feedback signals, the voltage at the energy source and the voltage at the battery for generating a gate signal to control the duty cycle of said switch.

## 19

12. The charger as set forth in claim 11 wherein said second providing means comprises a current monitor for developing said second feedback signal.

13. The charger as set forth in claim 11 including a diode disposed between the secondary coil and the battery.

14. The charger as set forth in claim 11 wherein the energy source is a photo voltaic array having a voltage less than the voltage of the battery.

15. The charger as set forth in claim 14 including a plurality of photo voltaic panels connected in series and a plurality of batteries connected in series.

16. A charger for charging a battery from an energy source which may have a voltage lower than the battery, said charger comprising in combination:

- (a) a transformer having a center tap in the primary coil and a center tap in the secondary coil;
- (b) first means for connecting the energy source across the center tap of the primary coil and ground;
- (c) a first switch for interconnecting one end of the primary coil through a resistor to ground;
- (d) a second switch for interconnecting another end of the primary coil through the resistor to ground;
- (e) second means for connecting the battery across the center tap of the secondary coil and the opposed ends of the secondary coil through diodes;
- (f) first means for providing a first feedback signal commensurate with the instantaneous switch current;
- (g) second means for providing a second feedback signal commensurate with the current flowing to the battery; and
- (h) a control circuit responsive to said first and second feedback signals, the voltage at the energy source and the voltage at the battery for generating first and second gate signals to control the duty cycles of said first and second switches, respectively, and maximize the power level delivered by the energy source to the battery.

17. The charger as set forth in claim 16 wherein the energy source is a photo voltaic array having a voltage less than the voltage of the battery.

18. The charger as set forth in claim 17 including a plurality of photo voltaic panels connected in series and a plurality of batteries connected in series.

19. The charger as set forth in claim 16 wherein said second providing means comprises a current monitor for developing said second feedback signal.

20. A charger for charging a battery from an energy source which may have a voltage lower than the battery, said charger comprising in combination:

- (a) a transformer having a center tap in the primary coil and a center tap in the secondary coil;
- (b) first means for connecting the energy source across the center tap of the primary coil and ground;
- (c) a first switch for interconnecting one end of the primary coil through a resistor to ground;
- (d) a second switch for interconnecting another end of the primary coil through the resistor to ground;
- (e) second means for connecting the battery across the center tap of the secondary coil and the opposed ends of the secondary coil through diodes;
- (f) first means for providing a first feedback signal commensurate with the instantaneous switch current;
- (g) second means for providing a second feedback signal commensurate with the current flowing from the energy source; and

## 20

(h) a control circuit responsive to said first and second feedback signals, the voltage at the energy source and the voltage at the battery for generating first and second gate signals to control the duty cycle of said first and second switches, respectively, and maximize the power level delivered by the energy source to the battery.

21. The charger as set forth in claim 20 wherein the energy source is a photo voltaic array having a voltage less than the voltage of the battery.

22. The charger as set forth in claim 21 including a plurality of photo voltaic panels connected in series and a plurality of batteries connected in series.

23. The charger as set forth in claim 20 wherein said second providing means comprises a current monitor for developing said second feedback signal.

24. A charger for charging a battery from an energy source which may have a voltage lower than the battery, said charging comprising in combination:

- (a) a transformer having a center tap in the primary coil interconnected with a center tap in the secondary coil;
- (b) first means for connecting the energy source across the center tap of the primary coil and a ground common to the energy source and the battery;
- (c) a first switch for interconnecting one end of the primary coil through a resistor to ground;
- (d) a second switch for interconnecting another end of the primary coil through the resistor to ground;
- (e) second means for connecting the battery to opposed ends of the secondary coil through diodes and to the ground common with the energy source;
- (f) first means for providing a first feedback signal commensurate with the instantaneous switch current;
- (g) second means for providing a second feedback signal commensurate with the current flowing to the battery; and
- (h) a control circuit responsive to said first and second feedback signals, the voltage at the energy source and the voltage at the battery for generating first and second gate signals to control the duty cycles of said first and second switches, respectively, and maximize the power level delivered by the energy source to the battery.

25. The charger as set forth in claim 24 wherein the energy source is a photo voltaic array having a voltage less than the voltage of the battery.

26. The charger as set forth in claim 25 including a plurality of photo voltaic panels connected in series and a plurality of batteries connected in series.

27. The charger as set forth in claim 24 wherein said second providing means comprises a current monitor for developing said second feedback signal.

28. A charger for charging a battery from an energy source which may have a voltage lower than the battery, said charging comprising in combination:

- (a) a transformer having a center tap in the primary coil interconnected with a center tap in the secondary coil;
- (b) first means for connecting the energy source across the center tap of the primary coil and a ground common to the energy source and the battery;
- (c) a first switch for interconnecting one end of the primary coil through a resistor to ground;
- (d) a second switch for interconnecting another end of the primary coil through the resistor to ground;
- (e) second means for connecting the battery to opposed ends of the secondary coil through diodes and to the ground common with the energy source;

**21**

- (f) first means for providing a first feedback signal commensurate with the instantaneous switch current;
- (g) second means for providing a second feedback signal commensurate with the current flowing from the energy source; and
- (h) a control circuit responsive to said first and second feedback signals, the voltage at the energy source and the voltage at the battery for generating first and second gate signals to control the duty cycles of said first and second switches, respectively, and maximize the power level delivered by the energy source to the battery.

**22**

**29.** The charger as set forth in claim **28** wherein the energy source is a photo voltaic array having a voltage less than the voltage of the battery.

**30.** The charger as set forth in claim **29** including a plurality of photo voltaic panels connected in series and a plurality of batteries connected in series.

**31.** The charger as set forth in claim **28** wherein said second providing means comprises a current monitor for developing said second feedback signal.

\* \* \* \* \*