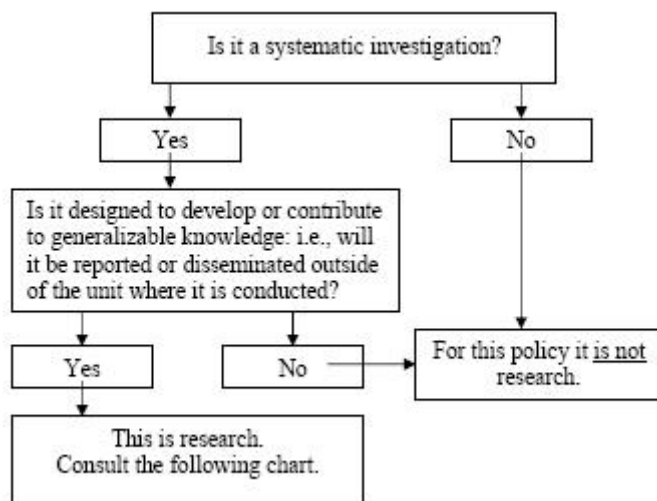


Human Subject Research

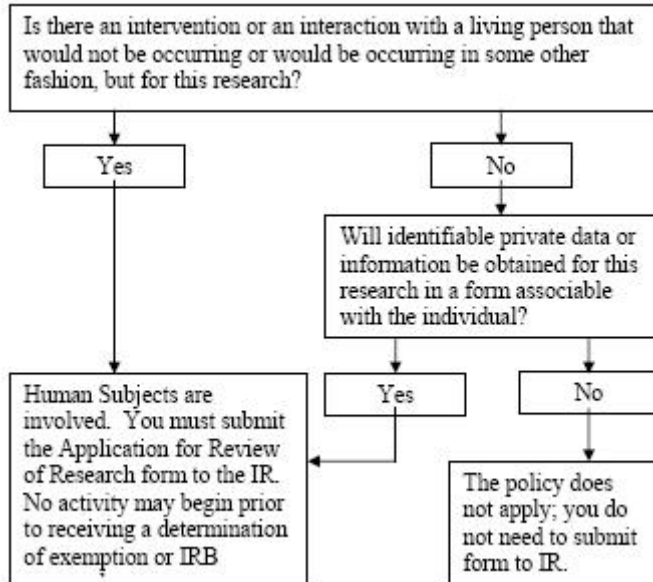
Rose-Hulman Institute of Technology Human Research Protection Policy follows Federal Government standards for protection of human subjects in research. Known as the *Common Rule*, Federal Regulations, Title 45 CFR Part 46 provides guidelines and definitions. Initially, an investigator must determine whether the investigation is or is not human subject research. The following two charts will assist in this decision. If there is any question, the investigator should consult with Robert Throne, RHIT's Institutional Reviewer before undertaking the investigation.

1. Is it RESEARCH?



Note: Even if the investigation is not research as defined by the Human Research Protection Policy, investigators are ethically required to follow practices that will not place individuals at greater risk than their normal activities and to apply general practices of informed consent.

2. Is it HUMAN SUBJECT research?



Additional charts that assist in answering questions about human subject research and exempt research are available at:

<http://www.hhs.gov/ohrp/humansubjects/guidance/decisioncharts.htm>