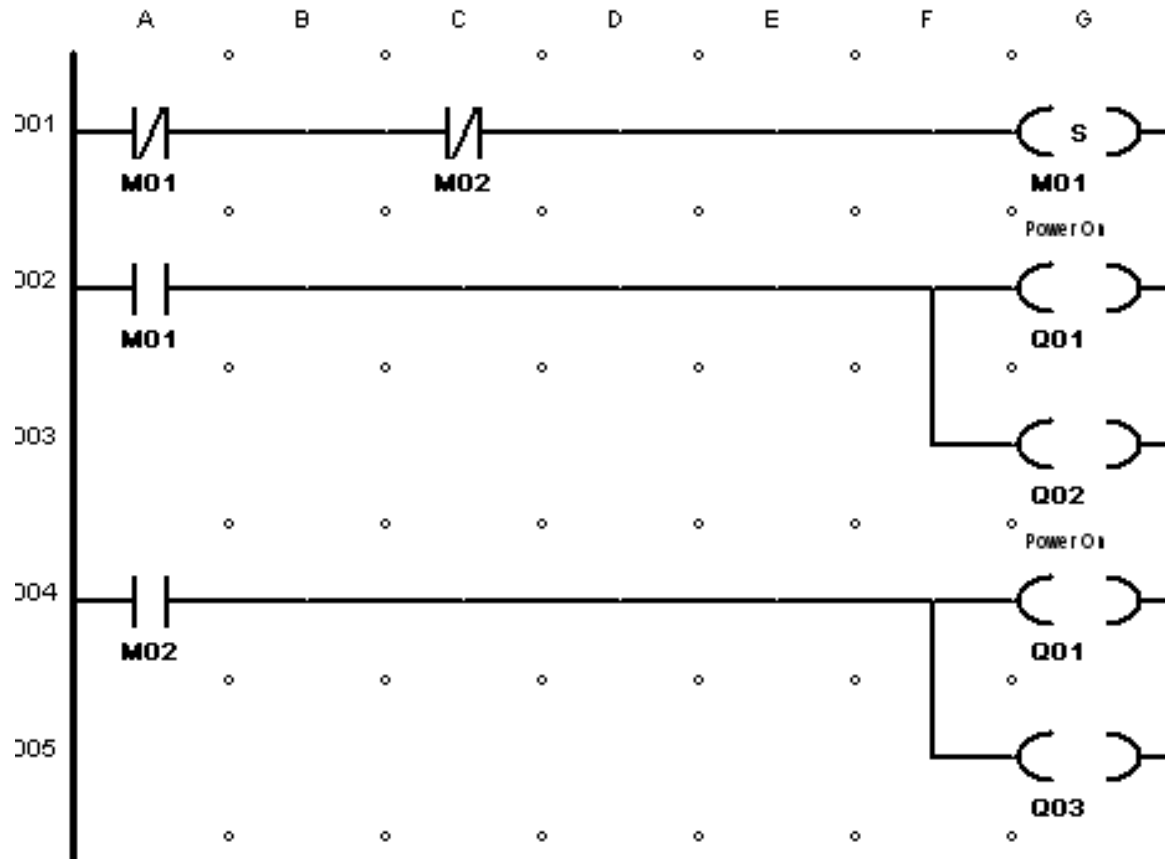


Now we have a structure similar to the one we created for the tank. This one has two states: M01 and M02. We initialize the program to be in M01. When M01 is true, the power Q01 is on and another output Q02 is on. When M02 is true, the power Q01 is on and an output Q03 is true.



When we start the simulation, M01 goes true, but Q01 is off. Why? What is the simplest way to fix this problem?

Moral/Rule: