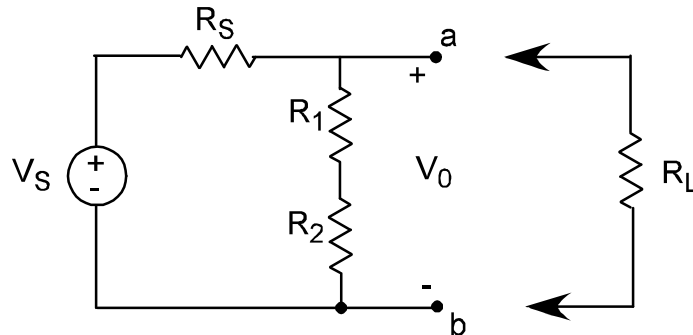


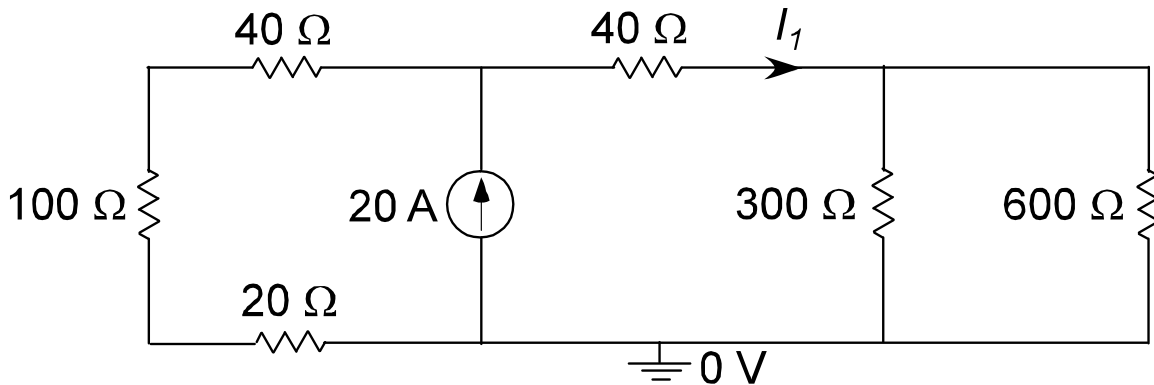
Homework Set #4
DUE Friday, March 17, 2017

1. For the following circuit:



$R_L = 12 \text{ k}\Omega$, $R_1 = 4 \text{ k}\Omega$, and $R_2 = 2 \text{ k}\Omega$ and $V_o = 72 \text{ V}$ when the load resistor (R_L) **is not connected**. When the load resistor (R_L) **is connected** to terminals a-b, V_o drops from 72 V to 60 V . Find the value of V_s and R_s .

2. Given the following circuit, find the value of I_1 using current divider.



3. Suppose the current source has been changed into a 240 V voltage source, find V_x using voltage divider.

