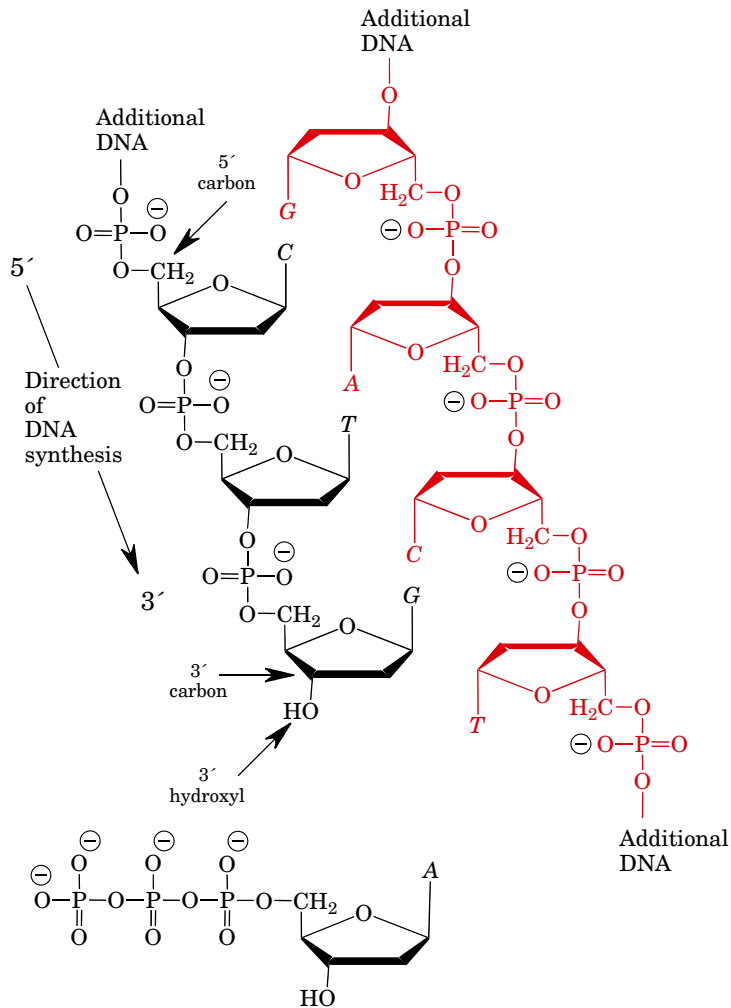
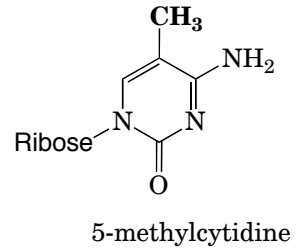
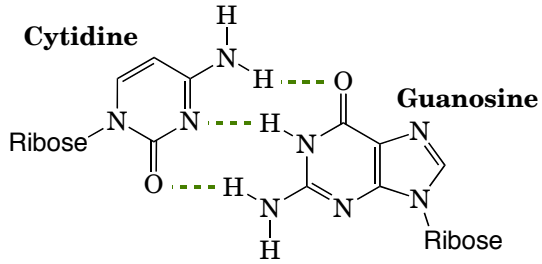
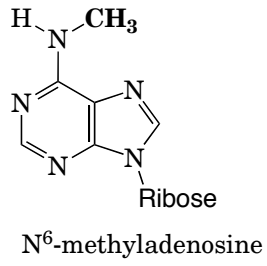
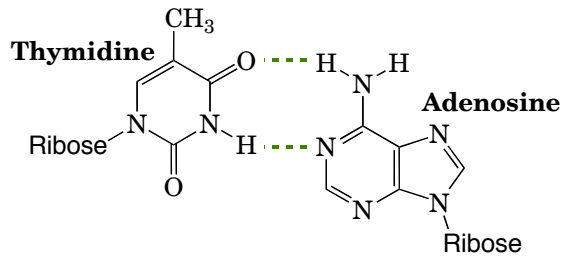
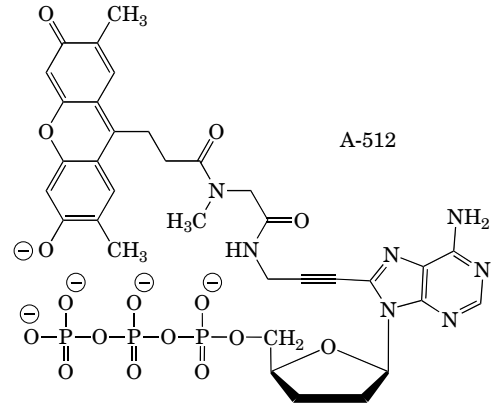
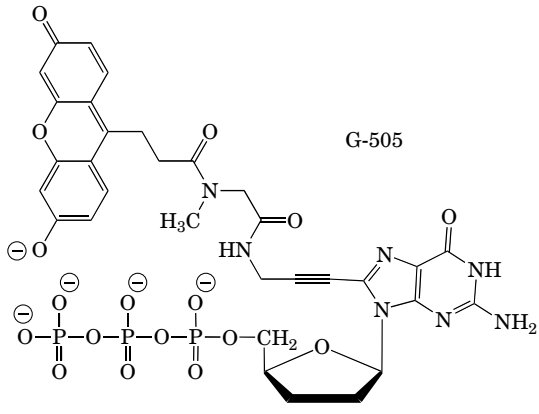
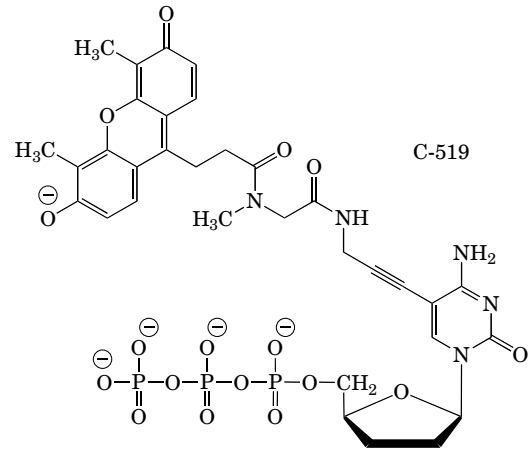
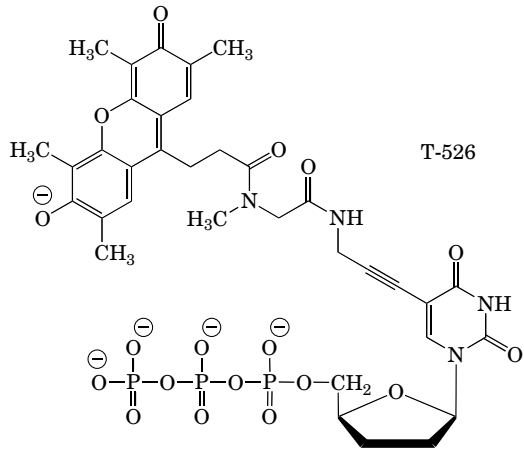


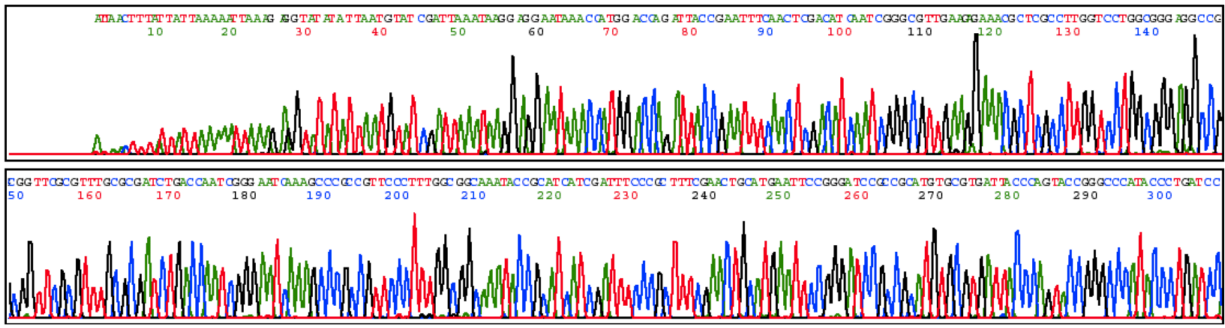
DNA

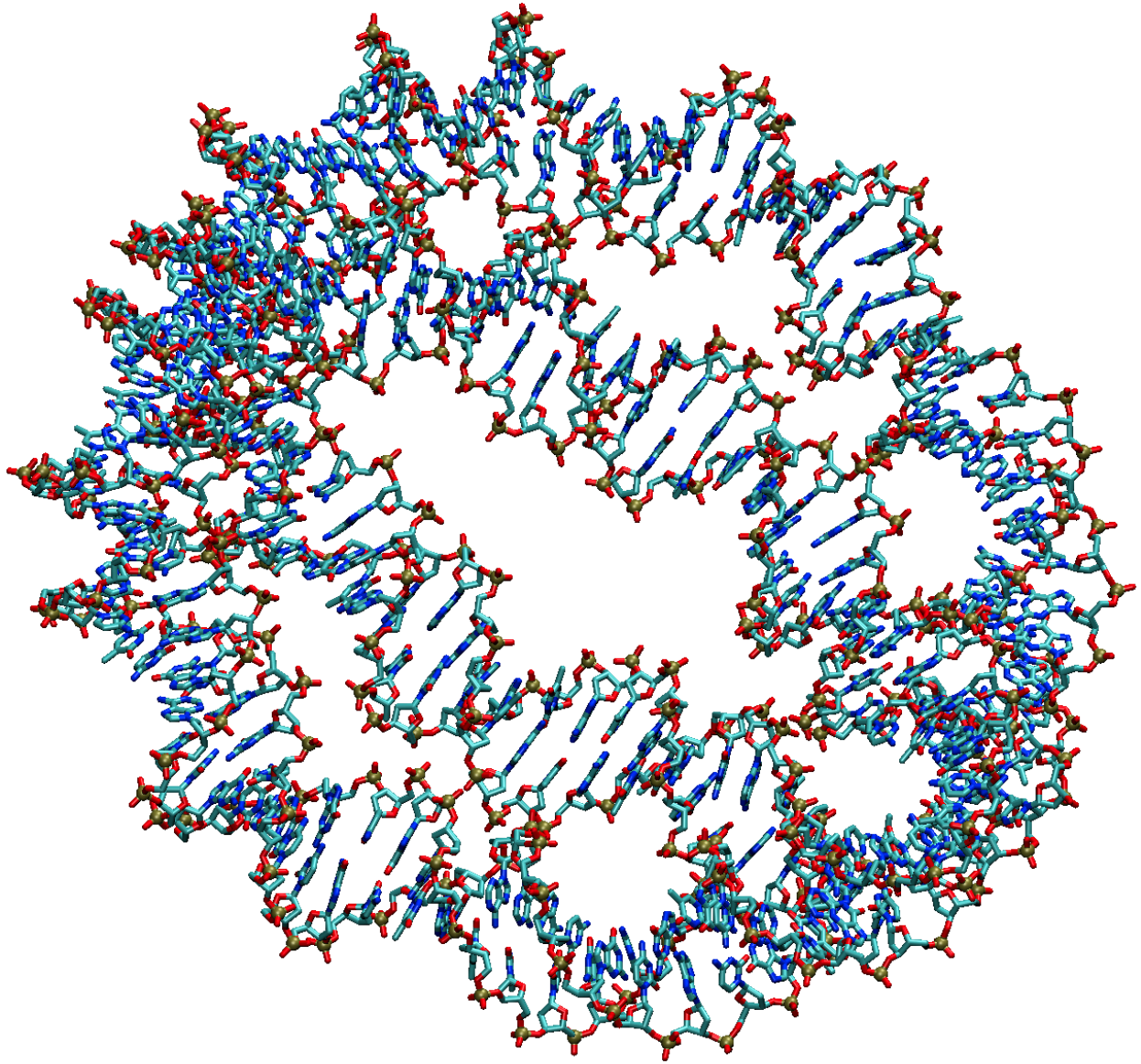




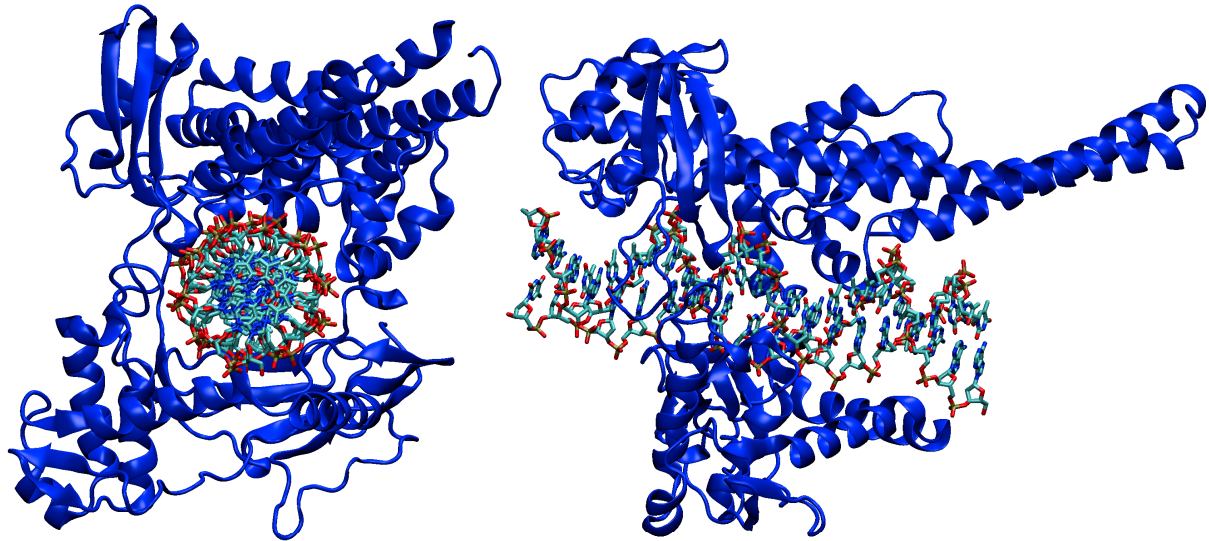
Model 3100 CM1-CM144-PLM472-10
 Version 3.3 MEYER
 Basecaller-3100SR.bcp CM1-CM144-103
 BC 1.3.0.0 Lane 1

Signal G:1214 A:942 T:802 C:966 of 2
 DT3100PCP61812.001 9:13 AM
 Thu, Mar 15, 2001 5:27 PM
 Points 500 to 1500 ng/ul (1.306)

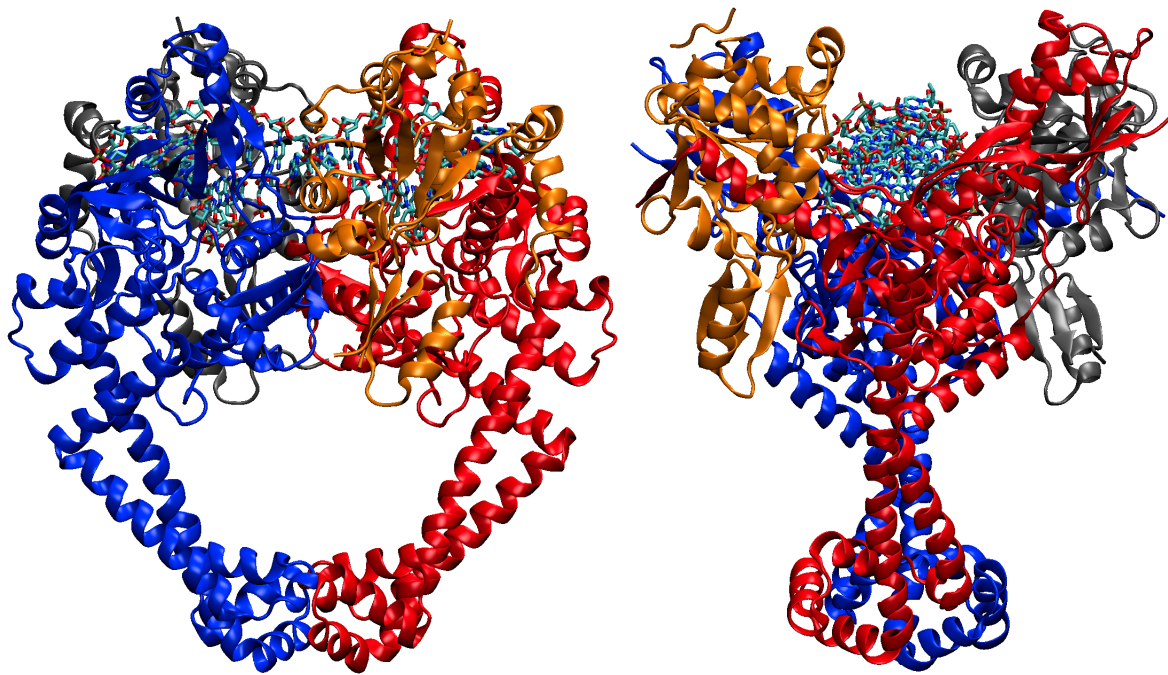




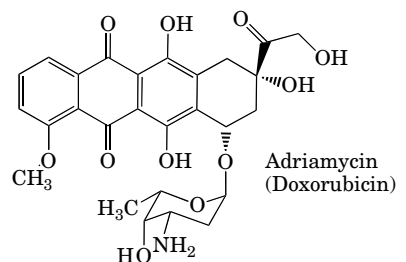
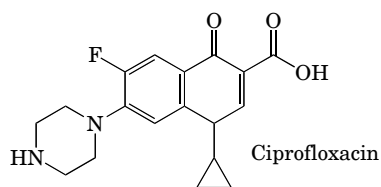
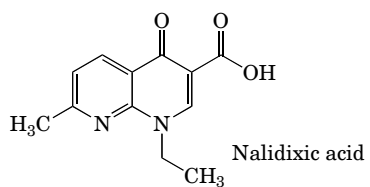
Xenopus laevis DNA wrapped around histone core (not shown) in a nucleosome (pdb ID 3LZ0)

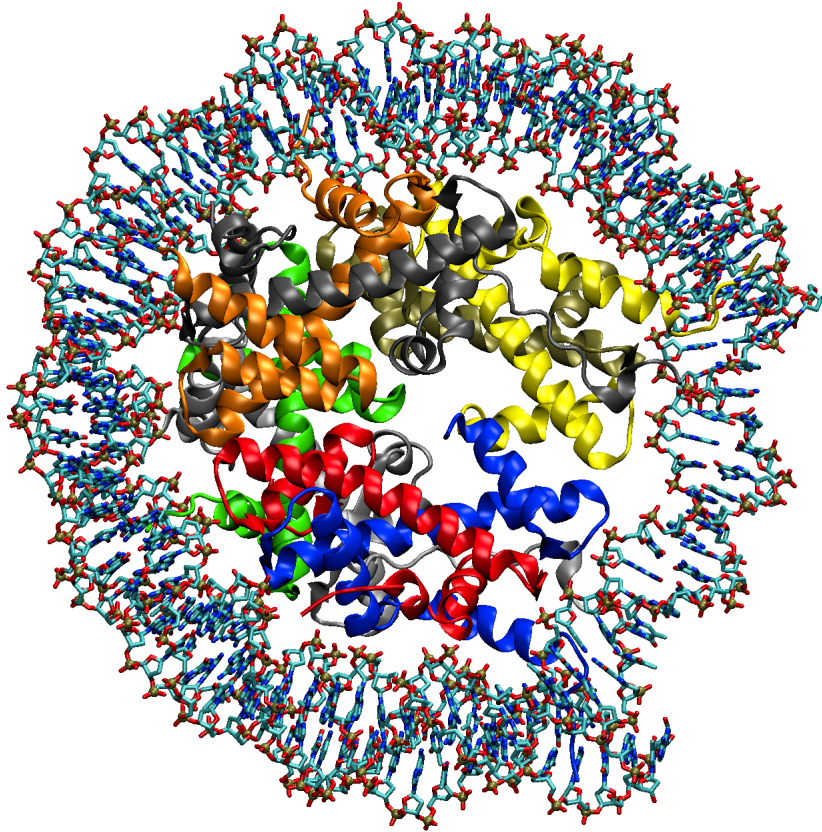


Human topoisomerase I (pdb ID 1A36)



Streptococcus pneumoniae Topoisomerase II (pdb ID 3KSA)

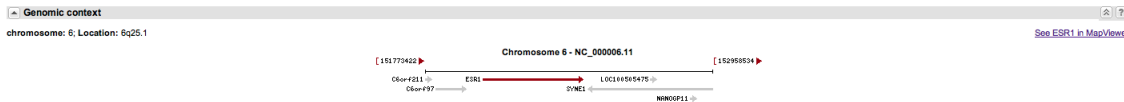
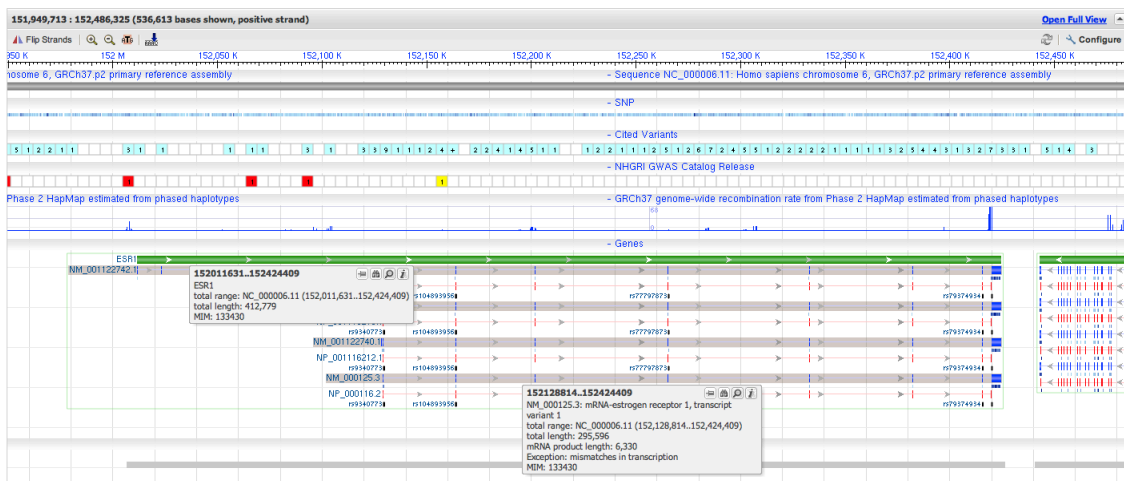




Xenopus laevis DNA wrapped around histone core in a nucleosome (pdb ID 3LZ0)



[TTAGGG]_n



Terms:

Deoxyribonuclease (DNase)

Exonuclease

Endonuclease

Restriction Endonuclease

Origin

DnaA

DNA adenine methylase (Dam methylase)

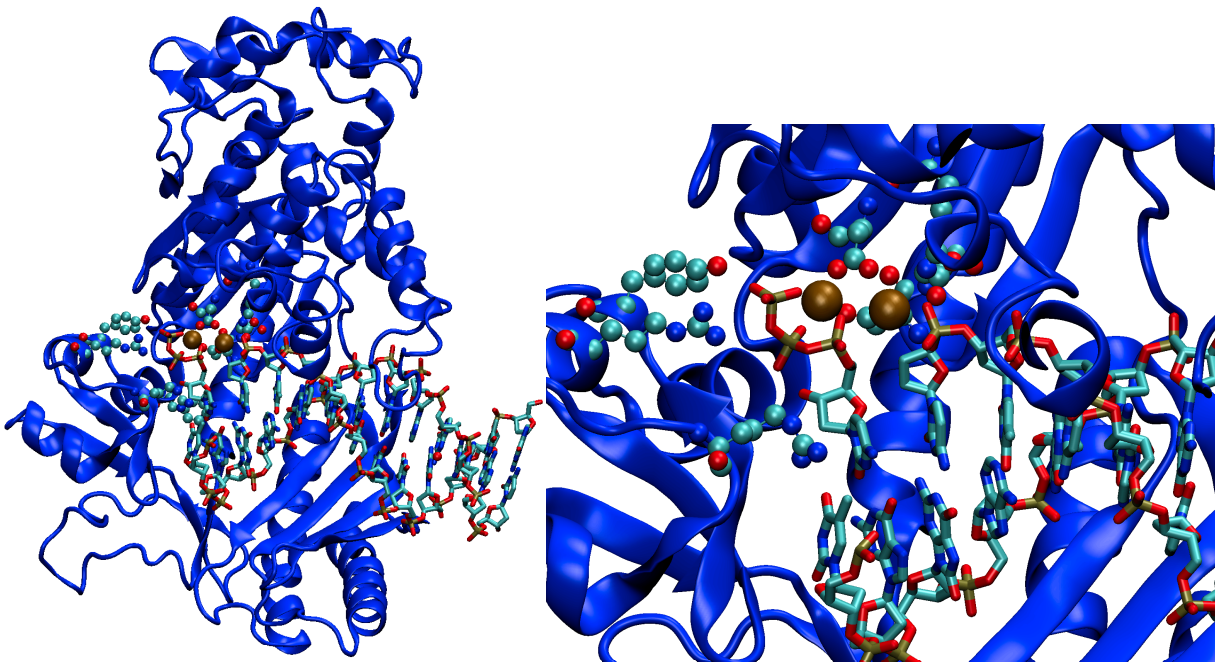
Helicase

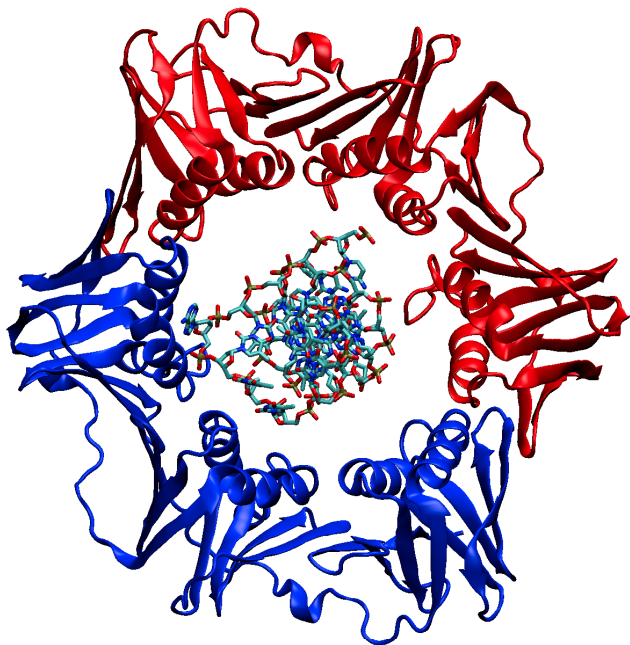
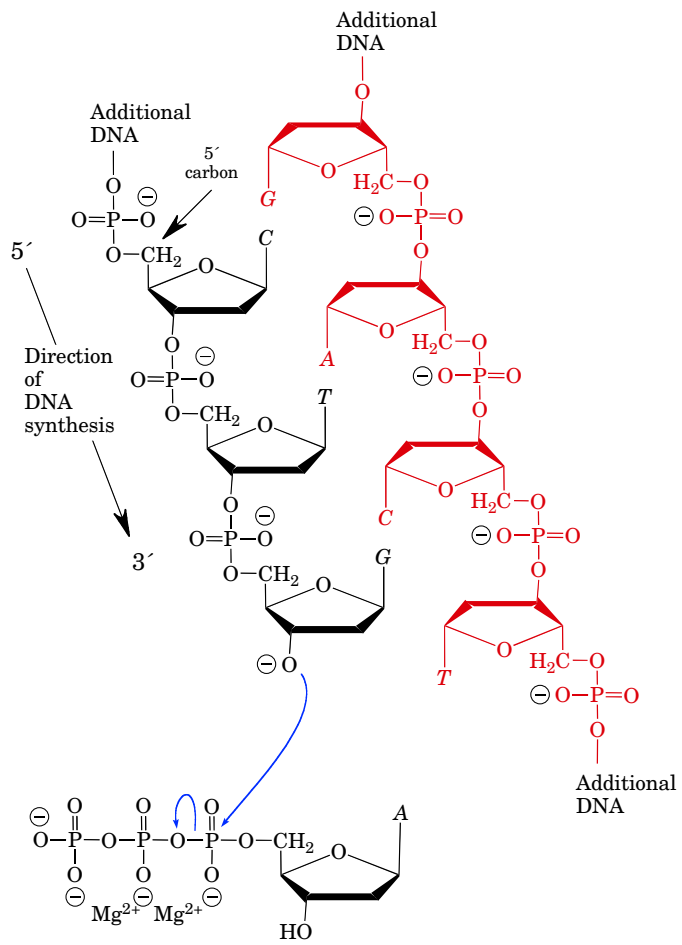
Gyrase

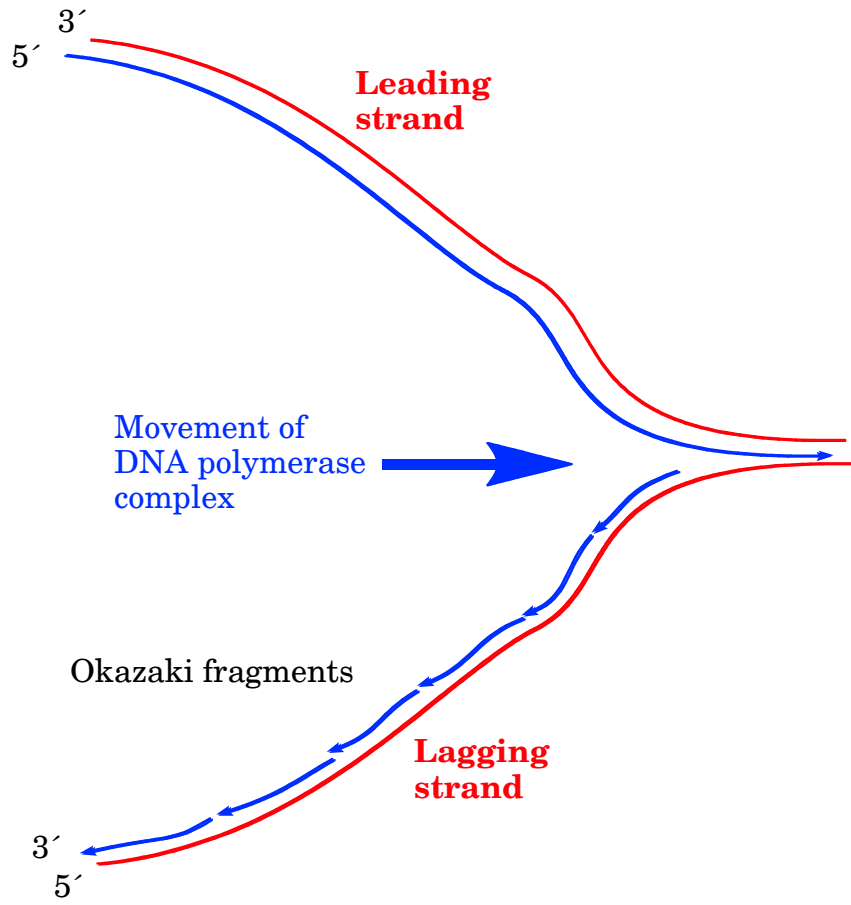
Ligase

Escherichia coli DNA Polymerases

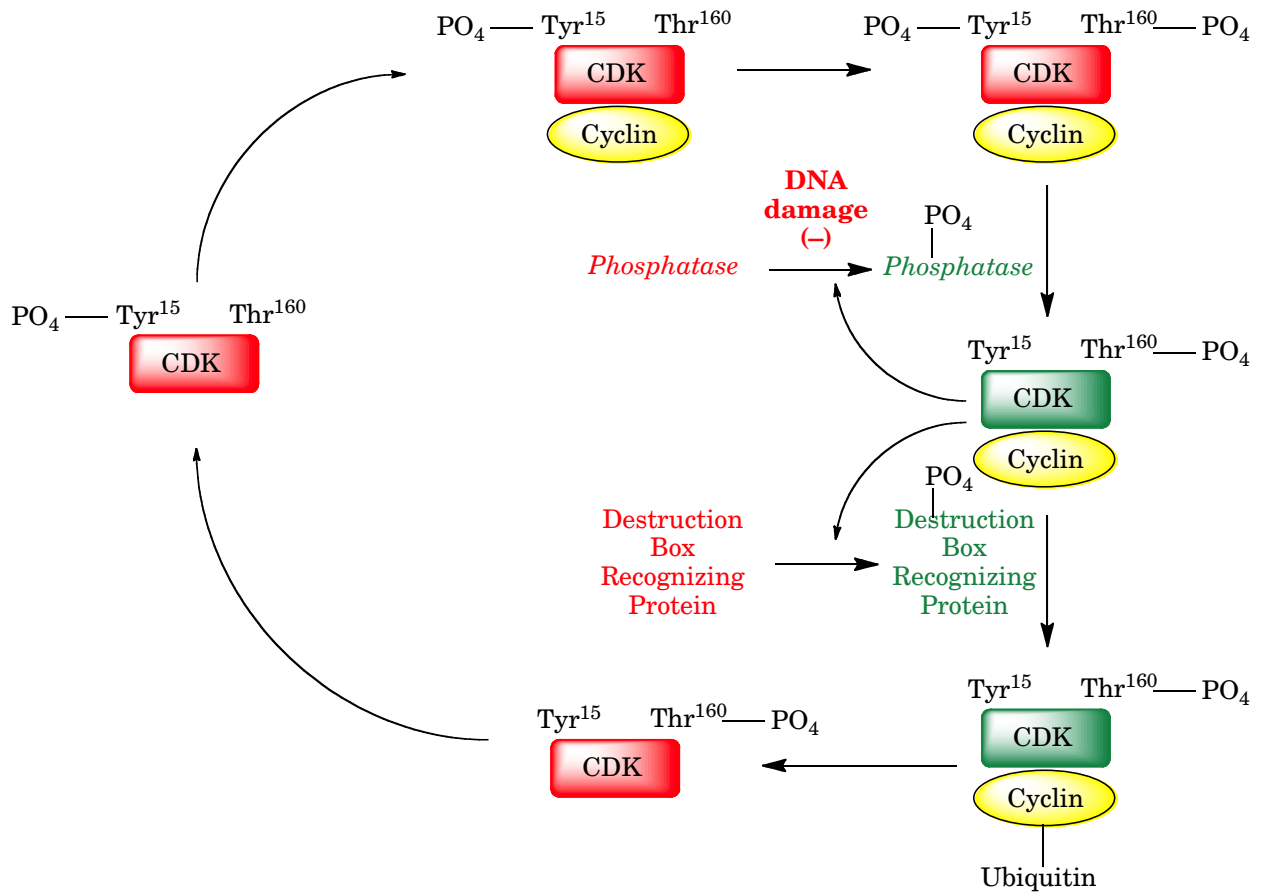
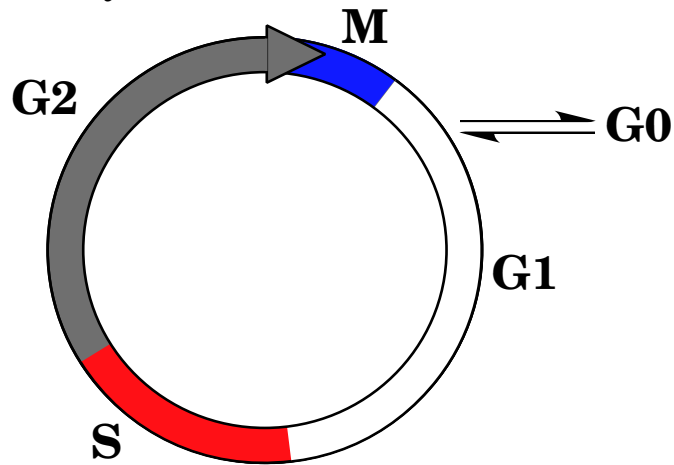
Enzyme	Functions	Activities
DNA Pol I	DNA repair mismatch detection primer degradation	Polymerase: 16-20 base/sec for 3 to 200 bases 3'→5' exonuclease 5'→3' exonuclease
DNA Pol II	DNA repair	Polymerase: 40 base/sec for ~1500 bases 3'→5' exonuclease
DNA Pol III	Replication	Polymerase: 250-1000 base/sec for 500 kilobases 3'→5' exonuclease



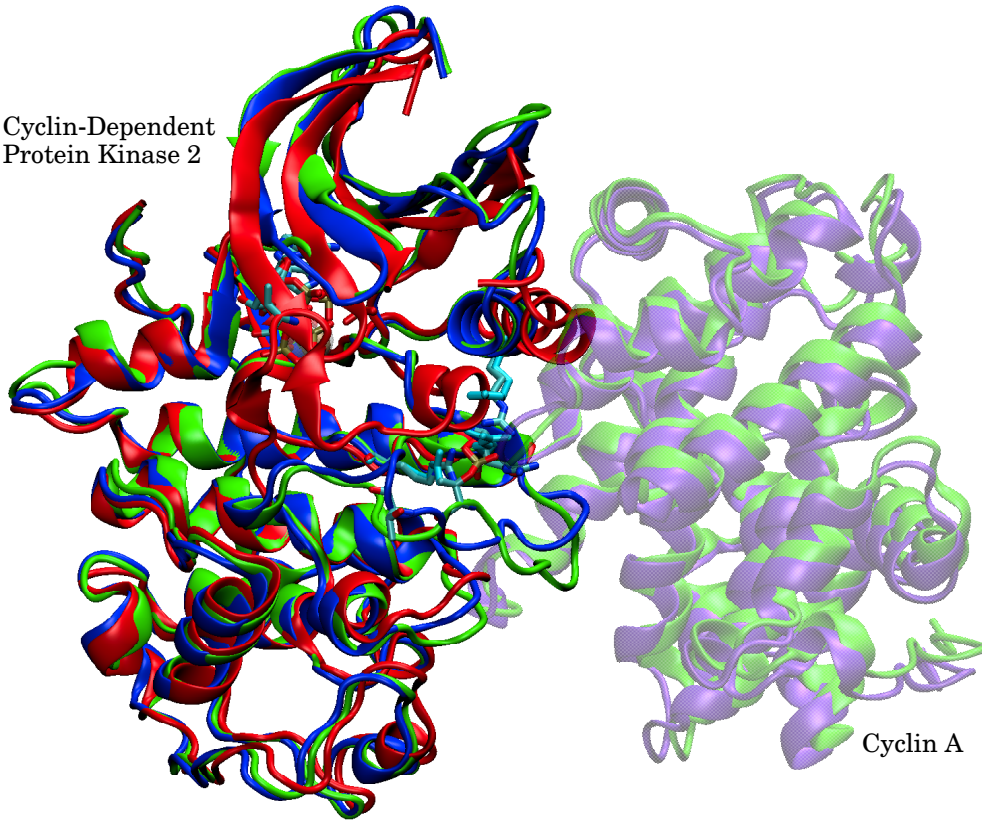




Cell cycle



Cyclin-Dependent Protein Kinase 2



Cyclin A

Cyclin-Dependent Protein Kinase 2

