



ROSE-HULMAN
INSTITUTE OF TECHNOLOGY

FACULTY HIRING PROSPECTUS

A Guide to Faculty Life @ RHIT

2024

www.rose-hulman.edu



TABLE OF CONTENTS

<u>Welcome to Rose-Hulman</u>	3
<u>A Message from the Academic Leadership</u>	4
<u>Teaching Responsibilities</u>	5
<u>Academic Facilities</u>	6
<u>Support for Faculty Success</u>	8
<u>A Great Place to Grow</u>	9
<u>Our Community</u>	10



WELCOME TO ROSE-HULMAN



Rose-Hulman Institute of Technology is dedicated to preparing its students with the world's best undergraduate science, engineering and mathematics education in an environment infused with intellectual rigor and individualized attention.

Founded in 1874, the institute is recognized nationally as an elite STEM school for distinctions that include curricular quality, faculty excellence, return on investment, and career services. Career placement is near 100% year after year. The scenic campus in west-central Indiana is home to more than 2,200 students with a passion for STEM and learning. We offer bachelor's degrees in more than twenty disciplines and master's degrees in eight. Our faculty are recognized nationally for achievements in educating future STEM professionals.

Some of our distinctions:

Rose-Hulman Institute of Technology practices equal opportunity in education and employment and is strongly and actively committed to diversity within its community.

- [2024 U.S. News & World Report College Guide](#)
No. 1 Undergraduate Engineering Programs - 25th consecutive year
- [Wall Street Journal's 2024 Best Colleges in America](#)
No. 17
Wall Street Journal 2024 Best Colleges Category Rankings
 - No. 1 Learning Opportunities
 - No. 1 Learning Facilities
 - No. 2 Likelihood of Recommending to Others
 - No. 4 Career Preparation

- [2022 The Princeton Review's Best 387 Colleges](#)
No. 1 – Top 20 Best Schools for Internships (Private Schools)
Great Professor Accessibility
Students Study the Most
- **Princeton Review's *The Best 300 Professors***
Our faculty have been featured by the Princeton Review as the Most Accessible Professors and among *The Best 300 Professors*.
- **Times Higher Education/ Wall Street Journal**
[No. 10 - Best U.S. Universities for Student-Staff Interaction](#)

A MESSAGE FROM THE ACADEMIC LEADERSHIP



Rick Stamper

Provost and Vice President for Academic Affairs
Professor of Mechanical Engineering & Engineering Management

[Faculty Profile](#)

[LinkedIn Profile](#)

I hold four core beliefs about Rose-Hulman. First, we deliver transformational educational experiences that have a positive impact on the lives of each of our students. Every day we enact our mission to provide our students with the world's best undergraduate science, engineering, and mathematics education in an environment of individual attention and support. Second, we have a positive impact on society through the skilled engineers, scientists, and mathematicians who graduate from Rose-Hulman and go on to influence the world. Third, the keys to the first two beliefs are the people who comprise the faculty and staff here. We value the student experience and having students be a central part of our academic community, and we value diversity of culture and experiences so that all of our community members can think and act broadly, creatively, and inclusively about the defining challenges facing humanity. And finally, Rose-Hulman's best and brightest days are ahead of us. I invite you to join us in our important work and experience the great days to come.



Russ Warley

Dean of Faculty
Professor of Chemical Engineering

[Faculty Profile](#)

[LinkedIn Profile](#)

Rose-Hulman is an institute where our stakeholders are strongly united around our mission. In addition to being recognized as global leaders in science, engineering, and mathematics education, our faculty and staff often form lifelong connections with our graduates. In my role, I work to promote the individual success of students, staff, and faculty. Whether your plans include implementing cutting edge teaching, creating new curricular opportunities, developing co-curricular programming, mentoring students in research, or combining your work and your passion, there is a place for you at Rose-Hulman. If you value a student-focused learning environment in which each person has the support to live, learn, and flourish, I encourage you to apply for one of our open positions.

The institute values engaging students from traditionally underrepresented groups, and candidates from these groups are especially encouraged to apply. Candidates who can further broaden and enhance the educational experience of our students are also encouraged to apply.

TEACHING RESPONSIBILITIES



Rose-Hulman faculty members enact the institute's mission to provide the world's best education in science, mathematics, and engineering, and it shows in our work every day.

[Our academic calendar](#) includes three 10-week terms during the standard academic year, plus a summer term that has 5-week and 10-week courses. Classes at Rose-Hulman are typically small, with an average class size of just over 19 in the 2022 fall term; 77% of classes enroll 24 or fewer students; and our largest class in fall 2022 enrolled 35 students. The faculty-to-student ratio is just over 1:11. Our passion for student success is shown in these numbers. A typical teaching load is responsibility is three sections per term, spread across two different courses.

Many faculty members teach courses across their program's curriculum, interacting with students at each stage in their academic career. Our curricula are faculty-designed and faculty-driven. Many departments support multiple programs to meet the needs of students and an increasingly complex STEM landscape, including more than 20 majors and 45 minors and other customized sequences. We've just started our [Rose Squared program](#), in which students concurrently earn a bachelor's degree and master's degree in engineering management in four years. All program requirements can be found in the [Course Catalog](#).

Our institution is accredited by the Higher Learning Commission. Our engineering programs are accredited by ABET, and our chemistry program is certified by the American Chemical Society. Complete accreditation information is available at our [Accreditation Summary](#).



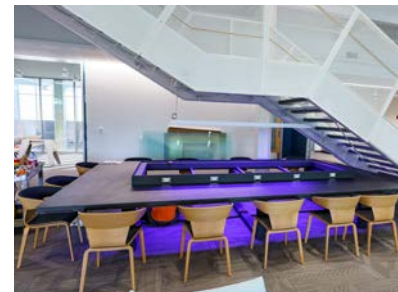
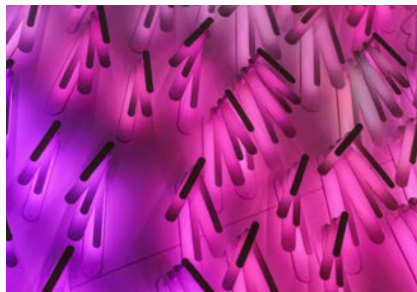
ACADEMIC FACILITIES

We believe in learning by doing, from student projects to faculty research, and our state-of-the-art labs, project space, classroom facilities, and academic buildings are well suited for that purpose. Our annual investment in replacing, upgrading, and extending our equipment ensures we're always providing students with contemporary experiences. Our classrooms are equipped for technology-supported teaching. Here are just a few of the places where we practice being intellectually adventurous:

NEW ACADEMIC BUILDING



This 70,000-square-foot academic building opened in Fall 2021 houses design studios, flexible classrooms, state-of-the-art chemistry, biochemistry and food science labs, collaboration workspaces, and faculty innovation spaces, along with an atrium featuring artwork that reacts to changing conditions within the building.



ACADEMIC FACILITIES

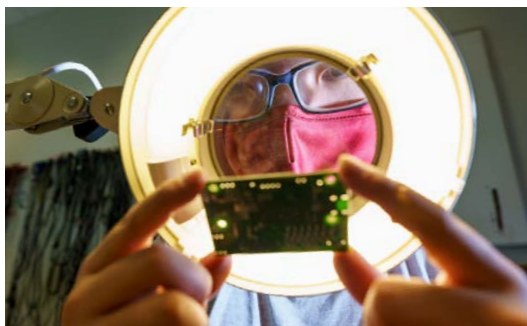
BRANAM AND KREMER INNOVATION CENTERS



These paired facilities provide wide-open workspaces with lots of tools and training to support our doers: competition teams who finetune their equipment, club members who create innovations, and individual students who collaborate across majors on their passion projects.

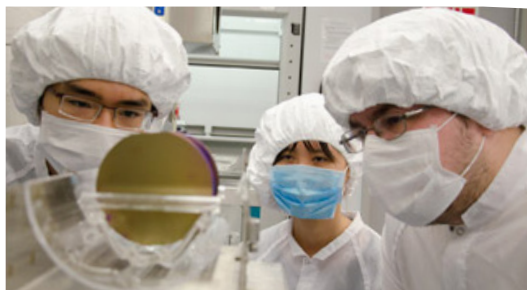


ROSE-HULMAN VENTURES



Ventures puts students in a real industry innovation space, working with highly experienced engineers, software developers, and designers on technical projects for clients ranging from individual entrepreneurs to Fortune 500 corporations. The 100-acre Ventures campus hosts a 35,000 square-foot facility equipped with modern labs, rapid-prototyping, CAD and 3D-printing resources and the latest software development tools.

JOHN T. MYERS CENTER FOR TECHNOLOGY RESEARCH



This modern classroom and lab building includes 40,000 square feet distributed among the Micro-Nano Scale Device and Systems (MINDS) cleanroom, the Orthopaedic Biomedical Engineering Lab, a fabrication shop, individual faculty research spaces, and other project spaces.

SUPPORT FOR FACULTY SUCCESS

The **Center for the Practice and Scholarship of Education** is the primary professional development office for faculty. Support from this office includes onboarding and mentoring (including our annual August teaching workshop), leadership development and leadership, writing collaboration and support, promotion and tenure assistance, and more. The CPSE also sponsors the Female Faculty affinity group, holding around six events per year.

The **Learning & Technology** team provides instructional technology services and support to faculty, students, and staff. L&T staff offer individualized instructional design assistance and technical help to facilitate innovative, effective uses of educational technology for face-to-face, hybrid, and online learning.

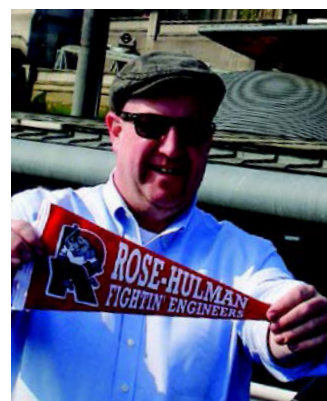
The **Sponsored Programs Office** supports and advises faculty in securing external support for sponsored projects and collaborations.

Institutional Research, Planning, and Assessment supports faculty in the education of Rose-Hulman students by developing and implementing strategies for timely collection, analysis, reporting, and use of quality data and information. We foster a culture of evidence-based continuous improvement and are recognized as a leader and contributor in institutional research and the assessment of student learning.

Logan Library provides access to high quality resources, comfortable and quiet work areas, excellent service, convenient hours, and friendly, helpful staff to support Rose-Hulman's curriculum and related needs. Significant services to faculty include interlibrary loan, curated collection development, in-class presentations and support, and more.

The **Center for Global Engagement** establishes, maintains, and promotes global partnerships. We collaborate with faculty and staff to facilitate the development of successful and safe international programs and travels, including course-based experiences and those involving conferences or professional opportunities. In addition, we help faculty, and staff incorporate cross-cultural perspectives and interactions in the curriculum and in co-curricular programming.

The **Office of Diversity, Inclusion, and Belonging** supports faculty in their efforts to teach students the skills they need to excel in their chosen field, including the ability to interact with people of diverse backgrounds and viewpoints. We support efforts to attract the best faculty and staff from all backgrounds to a campus community that understands and promotes diversity, inclusion, and belonging.

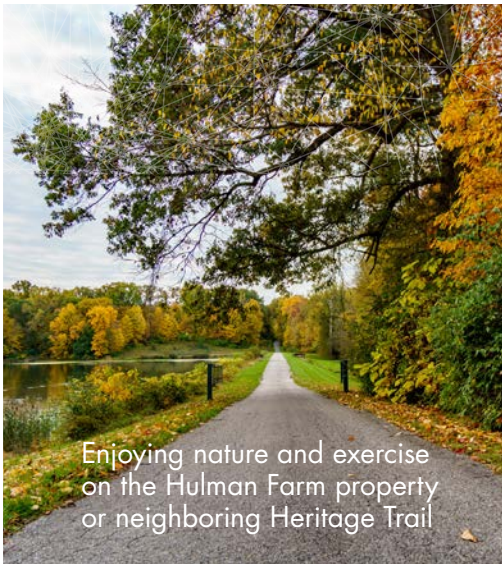


A GREAT PLACE TO GROW



Seeing live shows from national touring acts and campus productions in our beautiful Hatfield Hall

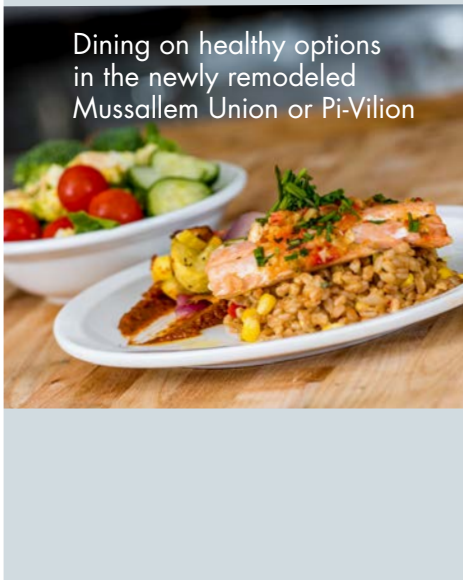
Rose-Hulman is about learning and living. Our faculty and staff enjoy many aspects of the small college experience, including...



Enjoying nature and exercise on the Hulman Farm property or neighboring Heritage Trail



Using the maker spaces and equipment in the Branam Innovation Centers and Kremer Innovation Center



Dining on healthy options in the newly remodeled Mussallem Union or Pi-Vilion



Competing on the faculty and staff intramural teams (against students!)



Learning from distinguished lectures, workshops, cultural events, and more—too many to list!



OUR COMMUNITY



Located on the banks of the Wabash River and conveniently located within driving distance of seven major cities, Terre Haute is a vibrant community with a revitalized downtown, museums, parks, four higher ed institutions, a rich historical past, and a dynamic food, music, and arts scene.

We invite you to learn more about Terre Haute and Vigo County: [City of Terre Haute Government](#), [Terre Haute Visitor & Convention Bureau](#), [Thrive West Central](#), [Vigo County Government](#), [Indiana State Parks](#). For more information, visit the [Office of Diversity, Inclusion, and Belonging's Local Guide](#).

Rose-Hulman's serene and safe campus located on the east side of Terre Haute was recently designated a Tree Campus with more than 1,200 trees on its 250-acre main location.

Your successes are celebrated in a welcoming, supportive, and flexible environment.

Employment benefits include:

- Defined contribution retirement package
- Varied health benefit options
- Optional dental insurance and vision insurance
- Employee assistance program
- Employee and dependent tuition support
- Life and disability insurance
- Mentoring program
- YMCA and Student Recreation Center membership
- Access to multiple local and academic libraries
- Optional retirement health care savings plan

Becoming a member of our community gives you the opportunity to contribute to a noble pursuit: to create STEM professionals—Rose-Hulman graduates—who are inspired and prepared for lives of purpose and success, defining and solving the problems of a complex global society.

Meet RHIT's greatest resource: [Our People](#)

Ready to learn more about our employment opportunities?

Visit www.rose-hulman.edu/hr